



Hunt Institute for Botanical Documentation  
5th Floor, Hunt Library  
Carnegie Mellon University  
4909 Frew Street  
Pittsburgh, PA 15213-3890  
Telephone: 412-268-2434  
Email: [huntinst@andrew.cmu.edu](mailto:huntinst@andrew.cmu.edu)  
Web site: [www.huntbotanical.org](http://www.huntbotanical.org)

The Hunt Institute is committed to making its collections accessible for research. We are pleased to offer this digitized item.

#### *Usage guidelines*

We have provided this low-resolution, digitized version for research purposes. To inquire about publishing any images from this item, please contact the Institute.

#### *Statement on harmful and offensive content*

The Hunt Institute Archives contains hundreds of thousands of pages of historical content, writing and images, created by thousands of individuals connected to the botanical sciences. Due to the wide range of time and social context in which these materials were created, some of the collections contain material that reflect outdated, biased, offensive and possibly violent views, opinions and actions. The Hunt Institute for Botanical Documentation does not endorse the views expressed in these materials, which are inconsistent with our dedication to creating an inclusive, accessible and anti-discriminatory research environment. Archival records are historical documents, and the Hunt Institute keeps such records unaltered to maintain their integrity and to foster accountability for the actions and views of the collections' creators.

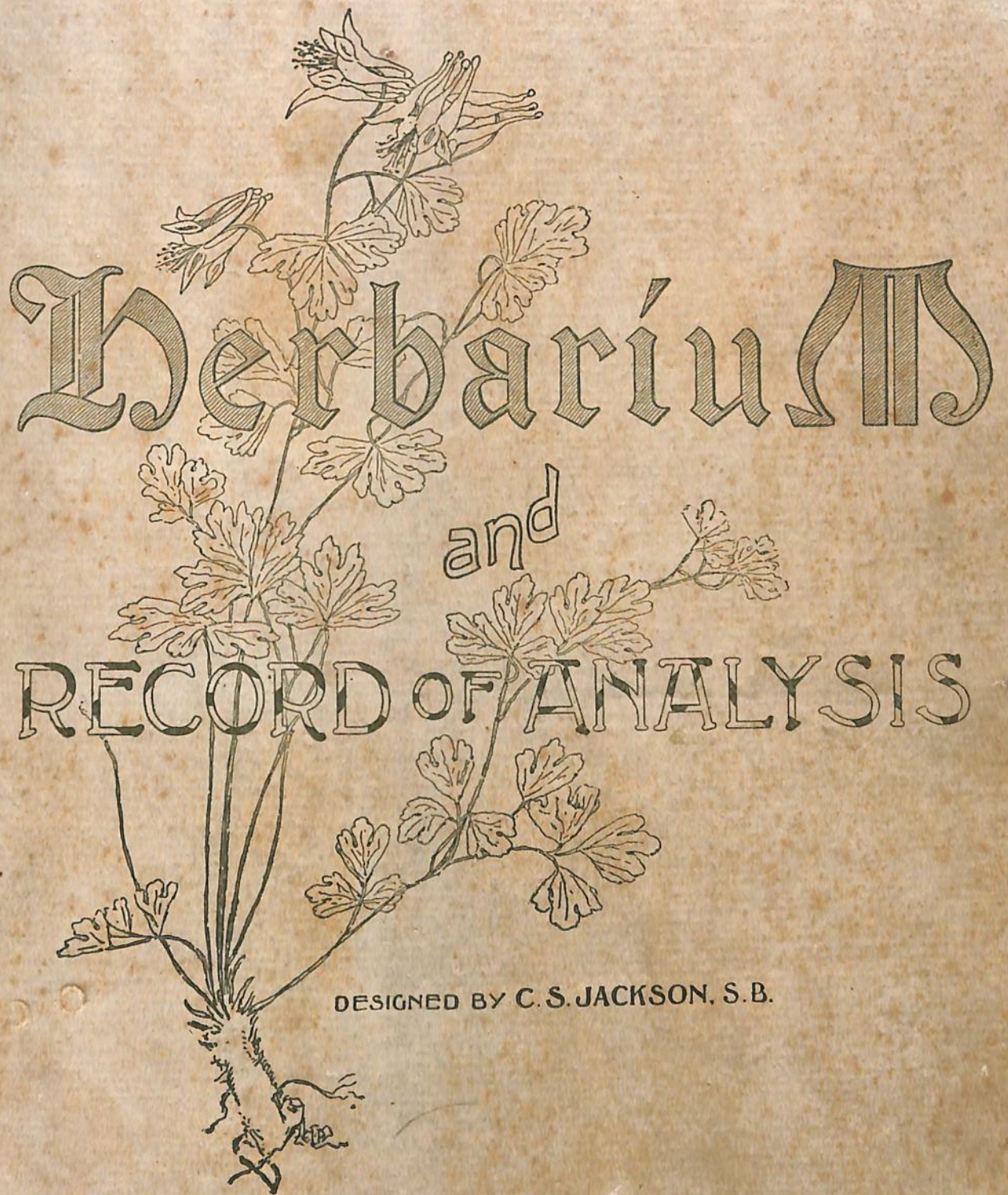
Many of the historical collections in the Hunt Institute Archives contain personal correspondence, notes, recollections and opinions, which may contain language, ideas or stereotypes that are offensive or harmful to others. These collections are maintained as records of the individuals involved and do not reflect the views or values of the Hunt Institute for Botanical Documentation or those of Carnegie Mellon University.

#### *About the Institute*

The Hunt Institute for Botanical Documentation, a research division of Carnegie Mellon University, specializes in the history of botany and all aspects of plant science and serves the international scientific community through research and documentation. To this end, the Institute acquires and maintains authoritative collections of books, plant images, manuscripts, portraits and data files, and provides publications and other modes of information service. The Institute meets the reference needs of botanists, biologists, historians, conservationists, librarians, bibliographers and the public at large, especially those concerned with any aspect of the North American flora.

Hunt Institute was dedicated in 1961 as the Rachel McMasters Miller Hunt Botanical Library, an international center for bibliographical research and service in the interests of botany and horticulture, as well as a center for the study of all aspects of the history of the plant sciences. By 1971 the Library's activities had so diversified that the name was changed to Hunt Institute for Botanical Documentation. Growth in collections and research projects led to the establishment of four programmatic departments: Archives, Art, Bibliography and the Library.

William Pancoast 1917



Herbarium  
and  
RECORD OF ANALYSIS

DESIGNED BY C. S. JACKSON, S. B.

PUBLISHED BY  
RUMFORD SUPPLY CO.  
LYNN, MASS.

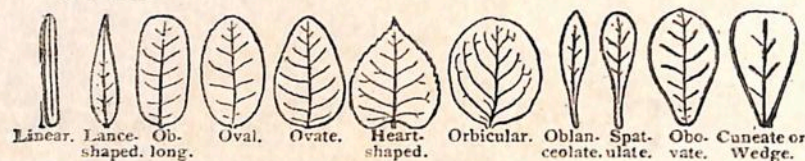
A KEY TO  
Record of Plant Analysis.

Copyright, 1906 by C. S. Jackson.

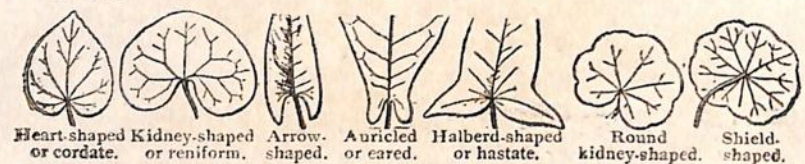
- ROOT**     *Kind*     Fibrous—consisting of, or branching into long, slender threads or fibers.  
Fleshy—thickened with the nourishment deposited in them.  
Rootstock—underground *stem* from which true roots grow, sometimes bearing tubers.
- STEM**     *Class*     Endogenous—growing by formation of new threads or fibers of wood among the old. Monocotyledonous.  
Exogenous—growing by the annual addition of layers of wood to the outside. Dicotyledonous.
- Character*  
Herbaceous—soft texture, little wood, dying to ground in winter.  
Shrubby—several woody stems.  
Arboreous—trees, one main woody stem growing to greater height.
- Mode of Growth*  
Erect—growing nearly vertical.  
Ascending—growing in a slanting direction at first.  
Declined—bent over to one side.  
Decumbent—growing on the ground with the end turning upwards.  
Procumbent—whole stem trailing along the ground.  
Creeping—procumbent, but striking root underneath.  
Climbing—rising by tendrils or leafstalks for supports.  
Twining—rising by coiling itself around a support.
- LEAVES**     *Arrangement*  
Alternate—one to each node.  
Opposite—two on same node opposite each other.  
Whorled—more than two on same node, forming a circle or whorl.
- Parts*     Mention absence of any parts, unusual color, texture, covering, appendages, pubescence, puncturing, etc.

**Kind** Simple—blade of one piece.  
Compound—blade of more than one piece.

**Shape** Mention veining—netted-veined or parallel-veined.  
Of blade:



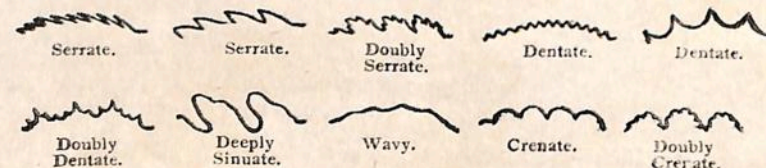
Of base:



Of apex:



Of margin:



**FLOWERS** **Position** Terminal—borne at end of the stem.  
Axillary—growing from the axils of leaves.

**Kind** Solitary—one blossom or scattered singly on the stem.  
Clusters—numerous blossoms close together. State kind of cluster spike, raceme, umbel, head, etc.

**CALYX** **Form** Entire—without lobes.  
Toothed—many small lobes.  
Lobed—cut down one-fourth.  
Cleft—cut down one-half.  
Parted—cut nearly to base.  
Free—separated, cut to base.

Monosepalous  
Polysepalous.

**Insertion**



**SEPALS** **Shape** See description for shape of leaves.

**Aestivation**—folding of parts in the bud.  
Valvate—edges of parts in bud just meeting.  
Convolute—one edge of each part in bud overlapping the next.  
Imbricate—one or more parts wholly outside the others.  
Plicate—parts folded lengthwise.

**COROLLA** **Form**

Tubular—limb inconspicuous in proportion to tube.

Trumpet-shaped—tube dilating slightly, limb conspicuous, entire or lobed.

Funnel-shaped—tube gradually enlarging into expanded limb.

Bell-shaped—sides of tube nearly parallel, length about twice breadth.

Salver-shaped—tube long, narrow, expanding abruptly into flattish limb.

Wheel-shaped—tube inconspicuous, widely spreading from near base.

Labiata—tube parted to form, usually, two lips.

Liliaceous—petals clawed, like lily.  
Rosaceous—petals without claws, like rose.  
Cruciferous—four clawed, petals in form of a cross.



Monopetalous.

Polypetalous.

**Insertion**

Free—attached to receptacle below pistil. (See Free calyx.)  
Inserted on calyx—attached to calyx. (See Half-adherent calyx.)  
Adherent—attached to ovary. (See stamens Inserted on ovary.)

**PETALS** **Shape**

**Aestivation**

See aestivation of sepals.

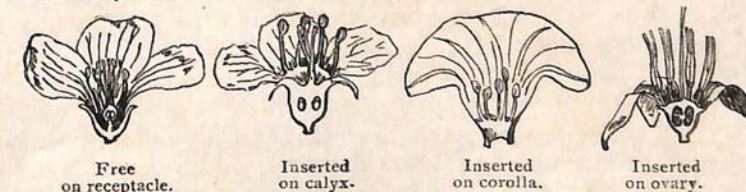
**STAMENS** **Number**

State number, and whether free, united by filaments into one or more sets, or united by anthers.

**Length**

in inches; state whether all are equal.

**Insertion**



**Filament**  
**Anthers**

State length and whether slight or stout.

Attachment to filament.

Innate—base of anther joined to apex of filament.  
Adnate—filament joined whole length of anther.  
Versatile—middle of anther joined to apex of filament.

Opening



Lengthwise.



Crosswise.



By terminal holes



By hinge at top

PISTILS *Kind*

Simple.

Compound.

*Style*

State length or if wanting describe as Sessile.

*Stigma*

Shape.

Globular.

Round and flat.

Feather-shaped.

Thread-like.

*Ovary.*

Placentation—attachment of ovules.

Axillary—ovules on a placenta in axis of cell.

Parietal—ovules borne on walls of cell.

FRUIT.

Simple—seed-vessels of one pistil, with all grown to it.

Aggregated—cluster of seed-vessels, all of same flower.

Accessory—flesh, etc., external to and separate from the pistil.

Multiple—Simple or accessory fruits of more than one flower.

#### COLLECTING PLANTS.

Using either a gardener's trowel, a stiff case-knife, or a flat, sharpened stick, remove the entire plant from the ground and shake all soil from the roots. Collect at least two specimens of a kind when possible, one to analyze and the other to mount. A box, pail or collecting case is almost a necessity to preserve plants from injury and from wilting.

#### PRESSING.

Make a folio of thin, unglazed paper—newspaper. Lay the specimen out flat on one of the inside pages just as it should appear when mounted, close the other leaf of the folio down upon it. Record on the outside the name of the plant, location and date of collection. Place several drying sheets on each side of the folio (two or three folded newspapers will answer) and place all between two boards or on the floor with board on top and subject it to a pressure of from 50 to 100 pounds. Several folios may be placed in the same pile. Do not open a folio till the specimen is dry. The drying process requires from five to ten days according to the succulency of the plant. Change the dryers every day and oftener if the specimen has especially delicate parts or shades of coloring.

#### MOUNTING.

Place the pressed specimen on the page opposite its description. Cut narrow strips of paper that has been liberally mucilaged and allowed to dry, court plaster or binding tape; moistening, paste the strips across the stem, branches, tips of leaves, etc., till the specimen is securely fastened to the page. A little mucilage on the paper under a large leaf will stick the leaf to the page, and is a method often employed. The fruit and the root should be pressed and mounted with the rest of the plant when practicable.

# RECORD OF PLANT ANALYSIS

Copyright, 1906 by C. S. Jackson

ROOT Kind Tap Root - Fleshy

STEM Class Exogenous Character Herbaceous  
 Mode of Growth Erect Height 6-8 inches

LEAVES Arrangement Opposite Parts 4 Parts 9 Parts 5 Parts 3 Parts 2 Parts 1 Part Color Green Kind Simple  
 Shape Kidney-shaped, netted veined, palmately

FLOWERS Position Terminal Kind Solitary

CALYX Color Green Form Polypalous Insertion Free

SEPALs Number Two Shape Oval Estivation Convolute

COROLLA Color White Form Salver-shaped Insertion Adherent

PETALS Number Eight Shape Ovate Estivation Valvate

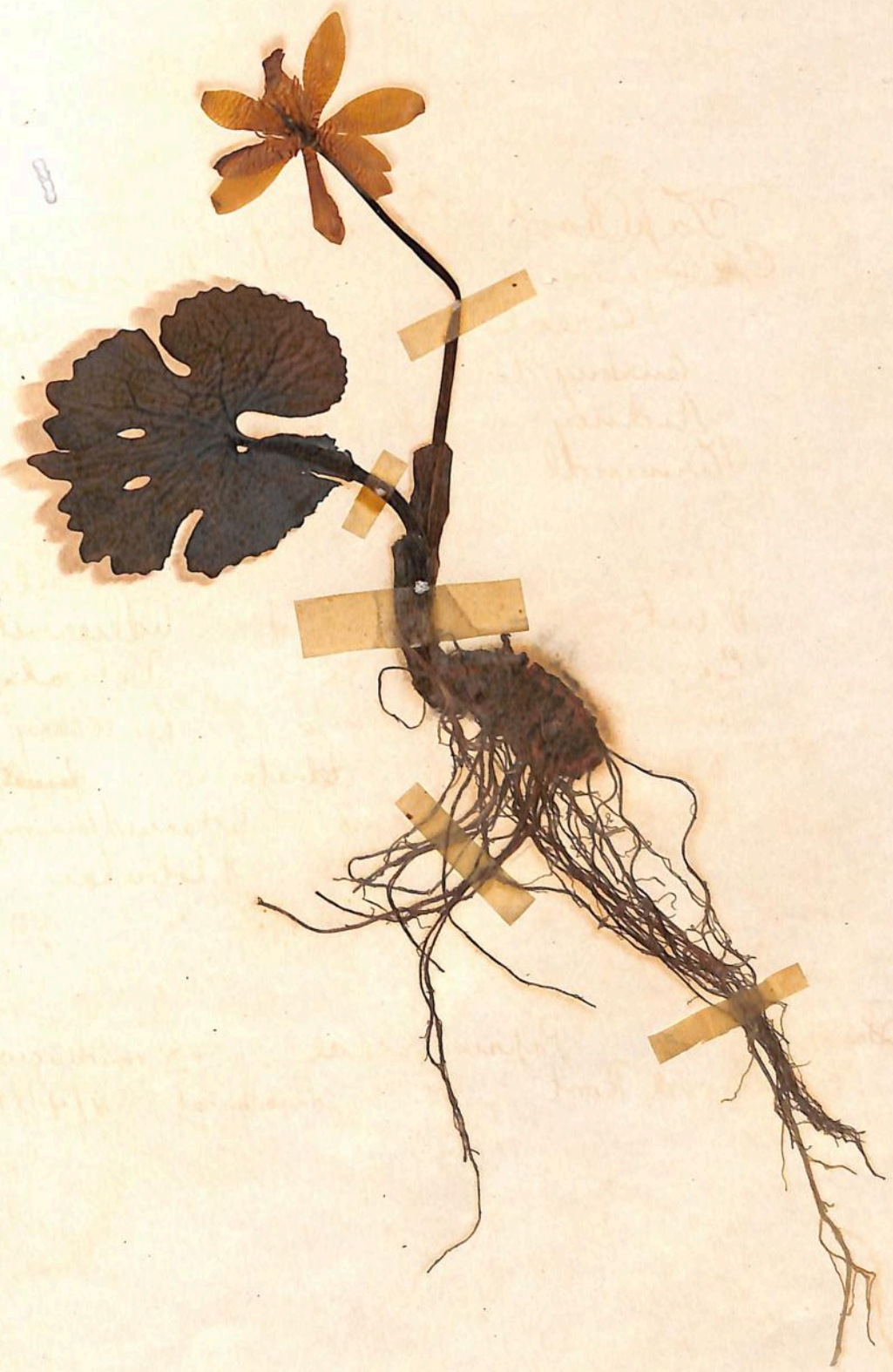
STAMENS Number Twenty-six Length Yan  $\frac{1}{2}$  -  $\frac{3}{16}$  Insertion Centrally  
 Filament 26 ( $\frac{11}{16}$ ) Anthers (a) Attachment Adnate (b) Opening Longitudinal

PISTILS Number One Kind Compound Style Attached to ovary  
 Stigma (a) Number Two (b) Shape Globular  
 Ovary (a) No. of cells One (b) Placentation Axillary (c) No. of ovules 40

FRUIT Kind Simple

Order Sanguinaria Genus Papaveraceae Species S. canadensis  
 Common Name Blood Root Location Low's Thicket Date 4/4/17

RUMFORD SUPPLY CO., LYNN, MASS.



4/19/17

# RECORD OF PLANT ANALYSIS

Copyright, 1906 by C. S. Jackson

ROOT Kind *Fleshy - thickened with nourishment in them*

STEM Class *Exogenous* Character *Herbaceous*  
 Mode of Growth *Ascending* Height *3-5 inches*

LEAVES Arrangement *Opposite* Parts *dark green* Color *Kind Simple*  
 Shape *Sance shaped Parallel veined*

FLOWERS Position *Clustered* Kind *Terminal*

CALYX Color *Brown* Form *Free* Insertion *On Receptacle*

SEPALs Number *Two* Shape *Same shaped* Estivation *Valvate*

COROLLA Color *Slight Pink* Form *Silver shaped* Insertion *On Receptacle*

PETALS Number *Five* Shape *Ovate* Estivation *Valvate*

STAMENS Number *Five* Length *1/4 of an inch* Insertion *On Receptacle*  
 Filament *1/2 slight* Anthers (a) Attachment *Innate* (b) Opening *Lengthwise*

PISTILS Number *One* Kind *Compound* Style *1/2 inch in length*  
 Stigma (a) Number *Three* (b) Shape *Thread like*  
 Ovary (a) No. of cells *3* (b) Placentation *Parietal* (c) No. of ovules *35*

FRUIT Kind *Seed*

Order *Portulacaceae* Genus *Claytonia* Species *C. virginica, L.*  
 Common Name *Spring Beauty* Location *Low's/Hubert* Date *4/4/17*

RUMFORD SUPPLY CO., LYNN, MASS.



5/2/17

# RECORD OF PLANT ANALYSIS

Copyright, 1906 by C. S. Jackson

ROOT Kind *Fibrous - consisting of slender threads or fibers*

STEM Class *Exogenous* Character *Herbaceous*  
 Mode of Growth *Erect* Height *6-12 inches*

LEAVES Arrangement *Radical* Parts *3 lobed* Kind *Simple*  
 Shape *Heart shaped Parallel veined palmately*

FLOWERS Position *Terminal* Kind *Solitary*

CALYX Color *Green* Form *Polysepalous* Insertion *On Receptacle*

SEPAL Number *Three* Shape *Sance shaped* Estivation *Imbricate*

COROLLA Color *Pink* Form *Silver shaped* Insertion *Adherent*

PETALS Number *Seven* Shape *Obovate* Estivation *Imbricate*

STAMENS Number *Eighteen* Length *1/4 of an inch* Insertion *On Receptacle*  
 Filament *None* Anthers (a) Attachment *Top* (b) Opening *Side*

PISTILS Number *Twenty five* Kind *Simple* Style *1/8 of an inch in length*  
 Stigma (a) Number *Twenty five* (b) Shape *Globular*  
 Ovary (a) No. of cells *One* (b) Placentation *Axillary* No. of ovules *One*

FRUIT Kind *Seed*

Order *Ranunculaceae* Genus *(H. ~~triloba~~ <sup>hepatica</sup> ~~triloba~~ <sup>hepatica</sup>)* Species *H. ~~triloba~~ <sup>hepatica</sup>* Clair  
 Common Name *Hepatica* Location *Lower Michigan* Date *4/4/17*

RUMFORD SUPPLY CO., LYNN, MASS.



4/19/17

# RECORD OF PLANT ANALYSIS

Copyright, 1906 by C. S. Jackson

ROOT Kind *Fascicled*

STEM Class *Cycnosous* Character *Herbaceous*  
 Mode of Growth *Erect* Height *4-5 inches*

LEAVES Arrangement *Whorled* Parts *Light Green* Kind *Simple*  
 Shape *Ovate netted veined palmately*

FLOWERS Position *Axillary* Kind *Clusters*

CALYX Color *White* Form *Polysepalous* Insertion *On receptacle*

SEPAL Number *4-7* Shape *Ovate* Estivation *Valvate*

COROLLA Color *Slight Pink* Form *Salver-shaped* Insertion *Adherent*

PETALS Number *8* Shape *Ovate* Estivation *Valvate*

STAMENS Number *35* Length *1/2 of an inch* Insertion *On Calyx*  
 Filament *1/2 of an inch* Anthers (a) Attachment *Adnate* (b) Opening *Lengthwise*

PISTILS Number *45* Kind *Simple* Style *1/2 of an inch*  
 Stigma (a) Number *45* (b) Shape *3 lobular*

Ovary (a) No. of cells *1* (b) Placentation *Parietal* (c) No. of ovules *10*

FRUIT Kind *Seed*

Order *Ranunculaceae* Genus *Anemone* Species *Anemone pulsatilla*  
 Common Name *Wood Anemone* Location *Ball-bridge* Date *4/26/19*

RUMFORD SUPPLY CO., LYNN, MASS.



# RECORD OF PLANT ANALYSIS

Copyright, 1906 by C. S. Jackson

ROOT Kind Fascicled  
 STEM Class Exogenous Character Herbaceous  
 Mode of Growth Erect Height 6-10 inches  
 LEAVES Arrangement Opposite Parts about Root leaf stem Kind Compound  
 Shape They have shape of Crow's foot Palmately veined  
 FLOWERS Position Terminal Kind Clusters  
 CALYX Color Light green Form Polypetalous Insertion on Receptacle  
 SEPALS Number 4 Shape Lance Estivation Valvate  
 COROLLA Color Rose color Form Saber shaped Insertion Free  
 PETALS Number 4 Shape Lance Estivation Convolute  
 STAMENS Number 6 Length 1/16 - 1/32 of an inch Insertion on Receptacle  
 Filament Stout Anthers (a) Attachment Adnate (b) Opening Lengthwise  
 PISTILS Number 1 Kind Simple Style 1/2 of an inch  
 Stigma (a) Number 1 (b) Shape Globular  
 Ovary (a) No. of cells 1 (b) Placentation Axillary (c) No. of ovules Many  
 FRUIT Kind Seed which is large fleshy root

Order Cruciferae Genus dentaria Species D. laciniata, Muhl.  
 Common Name Crow's foot Location Juggin Hollow Date 4/14/17

RUMFORD SUPPLY CO., LYNN, MASS.

4/26/17



# RECORD OF PLANT ANALYSIS

Copyright, 1906 by C. S. Jackson

ROOT Kind Tap Root, large and fleshy

STEM Class Endogenous Character Herbaceous  
 Mode of Growth Erect Height 8-14 inches

LEAVES Arrangement Whorled Parts Dark green Kind Simple  
 Shape Rhombic ovate, netted veined palmately

FLOWERS Position Terminal Kind Solitary

CALYX Color light green Form Polysepalous Insertion On Receptacle

SEPALS Number 3 Shape Sance shaped Estivation Convolute

COROLLA Color White Form Trumpet shaped Insertion Free

PETALS Number 3 Shape Obovate Estivation Convolute

STAMENS Number 6 Length 1/4 to 1/2 inch Insertion On Receptacle  
 Filament Slender Anthers (a) Attachment Adnate (b) Opening Lengthwise

PISTILS Number 1 Kind Compound Style 1/2 inch in length  
 Stigma (a) Number 3 (b) Shape Round and flat  
 Ovary (a) No. of cells 3 (b) Placentation Axillary (c) No. of ovules 3

FRUIT Kind a black roundish berry

Order Liliaceae Genus Trillium Species T. grandiflorum, Salisb.  
 Common Name Large-flowered Pale-rubin Location Bredale Date 4/17/17

RUMFORD SUPPLY CO., LYNN, MASS.



5/2/17

# RECORD OF PLANT ANALYSIS

Copyright, 1906 by C. S. Jackson

ROOT Kind *Tap Root, which looks like a seed onion*

STEM Class *Endogenous* Character *Herbaceous*  
 Mode of Growth *Erect* Height *9-12 inches*

LEAVES Arrangement *Opposite* Parts *petioles underground* Kind *Simple*  
 Shape  *lance shaped, light green with purple spots*

FLOWERS Position *Terminal* Kind *Solitary*

CALYX Color *Yellow* Form *Plysepalous* Insertion *on Receptacle*

SEPALS Number *3* Shape  *lance shaped* Estivation *Convolute*

COROLLA Color *Yellow* Form *Salicaceous* Insertion *on Receptacle*

PETALS Number *3* Shape  *lance shaped* Estivation *Valvate*

STAMENS Number *6* Length *1/4 to 5/16 inch* Insertion *on Ovary*  
 Filament *Slender* Anthers (a) Attachment *Adnate* (b) Opening *length-wise*

PISTILS Number *1* Kind *Compound* Style *1/4 of an inch*  
 Stigma (a) Number *3 joined together* (b) Shape *Round and flat*  
 Ovary (a) No. of cells *3* (b) Placentation *Axillary* (c) No. of ovules *3*

FRUIT Kind *Seed.*

Order *Salicaceae* Genus *Erythronium* Species *E. americanum, Murr.*  
 Common Name *Yellow Adonis* Location *Soudale* Date *5/22/17*

RUMFORD SUPPLY CO., LYNN, MASS.

5/2/17



# RECORD OF PLANT ANALYSIS

Copyright, 1906 by C. S. Jackson

ROOT Kind *Fascicled*

STEM Class *Cryptogamous* Character *Herbaceous*  
 Mode of Growth *Ascending* Height *6-8 inches*

LEAVES Arrangement *Whorled* Parts *Dark Green* Kind *Compound*  
 Shape *Compound in 3's and finely cut, netted veined palmately*

FLOWERS Position *Terminal* Kind *Raceme*

CALYX Color *Light Green* Form *Scale like* Insertion *On Receptacle*

SEPAL Number *2* Shape *Lance shaped* Estivation *Plicate*

COROLLA Color *Light Pink* Form *Heart shaped* Insertion *On Receptacle*

PETALS Number *4* Shape *Heart shaped* Estivation *Valvate*

STAMENS Number *6* Length *1/4 of an inch* Insertion *On Corolla*  
 Filament *Slender* Anthers (a) Attachment *Adnate* (b) Opening *Lengthwise*

PISTILS Number *1* Kind *Simple* Style *2/3 of an inch*  
 Stigma (a) Number *1* (b) Shape *Globular*  
 Ovary (a) No. of cells *1* (b) Placentation *Axillary* (c) No. of ovules *Many*

FRUIT Kind *Seed, 10-20 seeded.*

Order *Papaveraceae* Genus *Deinandra* Species *D. spectabilis, DC.*  
 Common Name *Wild Bleeding Heart* Location *igger Hollow* Date *4/21/17*  
*Hyacinth*  
 RUMFORD SUPPLY CO., LYNN, MASS.

5/2/17



1/12

78

# RECORD OF PLANT ANALYSIS

Copyright, 1906 by C. S. Jackson

ROOT Kind *Fascicled, large and fleshy*

STEM Class *Exogenous* Character *Herbaceous*  
 Mode of Growth *Erect* Height *6-8 inches*

LEAVES Arrangement *Whorled* Parts *Slight stem* Kind *Compound*  
 Shape *Ragged shaped made up of thread like structures (pinnately) <sup>reddish</sup> <sub>small</sub>*

FLOWERS Position *Terminal* Kind *Raceme*

CALYX Color *Slight Green* Form *Physalous* Insertion *On Receptacle*

SEPAL Number *2* Shape *Linear shaped* Estivation *Plicate*

COROLLA Color *White* Form *Heart shaped* Insertion *On Receptacle*

PETALS Number *4* Shape *Poon shaped* Estivation *Valvate*

STAMENS Number *6* Length *1/4 to 5/16 of an inch* Insertion *On Receptacle*  
 Filament *1/4 inch* Anthers (a) Attachment *Adnate* (b) Opening *Lengthwise*

PISTILS Number *1* Kind *Simple* Style *1/4 inch long*  
 Stigma (a) Number *2 crested* (b) Shape *Globular*  
 Ovary (a) No. of cells *1* (b) Placentation *Axillary* (c) No. of ovules *Many*

FRUIT Kind *Seed 10-20 seed in pod.*

Order *Papaveraceae* Genus *Silicentra* Species *O. bulbularia, DC*  
 Common Name *Dutchman's Breches* Location *Doverdale* Date *4/21/17*

RUMFORD SUPPLY CO., LYNN, MASS.



4/26/17

# RECORD OF PLANT ANALYSIS

Copyright, 1906 by C. S. Jackson

ROOT Kind *Fibrous with a main tap root*  
 STEM Class *Exogenous* Character *Herbaceous*  
 Mode of Growth *Erect* Height *3-9 inches*  
 LEAVES Arrangement *Whorled* Part *Root leaves* Kind *Simple*  
 Shape *Obovate netted veined palmately*  
 FLOWERS Position *Terminal* Kind *Dense Cluster Raceme*  
 CALYX Color *Light green* Form *Monosepalous* Insertion *On Receptacle*  
 SEPALS Number *5* Shape *Obovate (united)* Estivation *Valvate*  
 COROLLA Color *White* Form *Bell shaped* Insertion *On Receptacle*  
 PETALS Number *5* Shape *Sance shaped* Estivation *Valvate*  
 STAMENS Number *10* Length *1/2 of an inch* Insertion *On Ovary*  
 Filament *1/2 of an inch* Anthers (a) Attachment *Adnate* (b) Opening *Lengthwise*  
 PISTILS Number *2* Kind *Simple* Style *1/2 of an inch*  
 Stigma (a) Number *2* (b) Shape *Round and flat*  
 Ovary (a) No. of cells *2* (b) Placentation *Axillary* (c) No. of ovules *Many*  
 FRUIT Kind *Seed*

Order *Saxifragales* Genus *Saxifraga* Species *S. virginensis, Michx.*  
 Common Name *May flower* Location *Sweetdale* Date *4/20/17*  
 RUMFORD SUPPLY CO., LYNN, MASS.



4/26/17

# RECORD OF PLANT ANALYSIS

Copyright, 1906 by C. S. Jackson

ROOT Kind *Fibrous*

STEM Class *Exogenous* Character *Shrubby*  
 Mode of Growth *Decumbent* Height *about 12-14 inches on ground*

LEAVES Arrangement *Opposite* Parts *Dark Green* Kind *Simple*  
 Shape *Ovate, netted vein, pinnately*

FLOWERS Position *Axillary* Kind *Solitary*

CALYX Color *(light green) Purple* Form *5 parted, 2 upper* Insertion *On ovary*

SEPALS Number *5* Shape  *lance shaped* Estivation *Valvate*

COROLLA Color *Purple* Form *Salver-shaped* Insertion *On Receptacle*

PETALS Number *5* Shape *oval joined at throat* Estivation *Valvate*

STAMENS Number *5* Length *1/2 inch* Insertion *On Corolla*  
 Filament *Slender* Anthers (a) Attachment *Adnate* (b) Opening *lengthwise*

PISTILS Number *1* Kind *Simple* Style *1/2 of an inch*  
 Stigma (a) Number *1* (b) Shape *Globular*  
 Ovary (a) No. of cells *2* (b) Placentation *Axillary* No. of ovules *many*

FRUIT Kind *Pods 2, slender, cylindrical, many seeded*

Order *Apocynaceae* Genus *Vinca L.* Species *V. minor L.*  
 Common Name *Myrtle Periwinkle* Location *Old Stone Yard* Date *4/24/17*

5/2/17

RUMFORD SUPPLY CO., LYNN, MASS.



# RECORD OF PLANT ANALYSIS

Copyright, 1906 by C. S. Jackson

ROOT Kind Tap Root Large and fleshy

STEM Class Exogenous Character Herbaceous  
 Mode of Growth Declined Height 6-12 inches

LEAVES Arrangement Alternate Parts With Stipules Kind Simple  
 Shape Heart Shaped netted veined palmately

FLOWERS Position Axillary Kind Solitary

CALYX Color Light Green Form Plysepalous Insertion On Cuticle away

SEPALS Number 5 Shape Lance Shaped Estivation Convolute

COROLLA Color Yellow Form Trumpet Shaped Insertion On Receptacle

PETALS Number 5 Shape Obovate Estivation Convolute

STAMENS Number 5 Length 1/2 of an inch Insertion On Receptacle  
 Filament Stout Anthers (a) Attachment Adnate (b) Opening Lengthwise

PISTILS Number 1 Kind Simple Style 1/2 of an inch  
 Stigma (a) Number 1 (b) Shape Globular  
 Ovary (a) No. of cells 2 (b) Placentation Axillary (c) No. of ovules Many

FRUIT Kind Seed

Order Violaceae Genus Viola Species V. pubescens Ait  
 Common Name Downy Yellow Violet Location Sandale Date 4/25/17

RUMFORD SUPPLY CO., LYNN, MASS.

5/2/17



# RECORD OF PLANT ANALYSIS

Copyright, 1906 by C. S. Jackson

ROOT Kind *Fibrous with a main tap root*

STEM Class *Cruciferous* Character *Herbaceous*  
 Mode of Growth *Declined* Height *8-10 inches*

LEAVES Arrangement *Alternate* Parts *Medium Green* Kind *Simple*  
 Shape *Heart shaped, netted-veined palmately*

FLOWERS Position *Axillary* Kind *Solitary*

CALYX Color *Light Green* Form *Plysepalous* Insertion *On entire ovary*

SEPALs Number *5* Shape *Lance-shape* Estivation *Convolute*

COROLLA Color *Blue* Form *Tubed-shape* Insertion *On Receptacle*

PETALS Number *5* Shape *Obovate* Estivation *Convolute*

STAMENS Number *5* Length *1/2 of an inch* Insertion *On Receptacle*  
 Filament *Stout* Anthers (a) Attachment *Adnate* (b) Opening *Anythwise*

PISTILS Number *1* Kind *Simple* Style *1/2 of an inch*  
 Stigma (a) Number *1* (b) Shape *Globular*  
 Ovary (a) No. of cells *1* (b) Placentation *Axillary* (c) No. of ovules *Many*

FRUIT Kind *Seed*

Order *Violaceae* Genus *Viola* Species *V. palmata L.*  
 Common Name *Violet Johnny jump up* Location *Medale* Date *4/25/17*

RUMFORD SUPPLY CO., LYNN, MASS.



5/10/17

# RECORD OF PLANT ANALYSIS

Copyright, 1906 by C. S. Jackson

ROOT Kind Tap Root, large and fleshy

STEM Class Cryptogamous Character Herbaceous  
 Mode of Growth Ascending Height 6-8 inches

LEAVES Arrangement Alternate Parts Without Stipules Kind Simple  
 Shape Between heart and kidney shaped, netted veined palmately

FLOWERS Position Axillary Kind Solitary

CALYX Color Dark Red Form Polysepalous Insertion On Ovary

SEPAL Number 3 Shape Same shaped Estivation Valvate

COROLLA Color Purple Form Bell shaped Insertion On Receptacle

PETALS Number None Shape None Estivation None

STAMENS Number 12 Length 1/2 of an inch Insertion On Ovary  
 Filament None Anthers (a) Attachment Adnate (b) Opening Longitudinally

PISTILS Number 1 Kind Compound Style 1/2 of an inch  
 Stigma (a) Number 6 (b) Shape Globular  
 Ovary (a) No. of cells 6 (b) Placentation Axillary (c) No. of ovules Many

FRUIT Kind Seed

Order Aristolochiaceae Genus Asarum Species A. canadense, L.  
 Common Name Wild Ginger Location Svedala Date 4/2/17

RUMFORD SUPPLY CO., LYNN, MASS.



# RECORD OF PLANT ANALYSIS

Copyright, 1906 by C. S. Jackson

ROOT Kind *Fibrous with a small main tap root*

STEM Class *Exogenous* Character *Herbaceous*  
 Mode of Growth *Erect* Height *6-8 inches*

LEAVES Arrangement *Alternate* Parts *Many short* Kind *Compound*  
 Shape *like many small threads joined together netted, rimed palmately*

FLOWERS Position *Terminal* Kind *Raceme*

CALYX Color *Bright yellow* Form *Polysepalous* Insertion *On Receptacle*

SEPALs Number *2* Shape *Same shaped* Estivation *Valvate*

COROLLA Color *Bright yellow* Form *Salvate* Insertion *On Receptacle*

PETALS Number *4* Shape *Same shaped* Estivation *Convolute*

STAMENS Number *6* Length *1/2 of an inch* Insertion *On Corolla*  
 Filament *1/2 of an inch* Anthers (a) Attachment *Adnate* (b) Opening *Lengthwise*

PISTILS Number *1* Kind *Simple* Style *1/2 of an inch*  
 Stigma (a) Number *1* (b) Shape *Globular*  
 Ovary (a) No. of cells *1* (b) Placentation *Axillary* (c) No. of ovules *1*

FRUIT Kind *Seed*

Order *Papaveraceae* Genus *Corydalis* Species *Causia Miller*  
 Common Name *Golden Corydalis* Location *Bellbridge* Date *4/27/17*

RUMFORD SUPPLY CO., LYNN, MASS.

5/2/17



# RECORD OF PLANT ANALYSIS

Copyright, 1906 by C. S. Jackson

ROOT Kind *Fibrous*

STEM Class *Exogenous* Character *Herbaceous*  
 Mode of Growth *Creeping* Height *1-2 feet*

LEAVES Arrangement *Whorled* Parts *Dark Green* Kind *Simple*  
 Shape *Kidney form, notched, veined palmately*

FLOWERS Position *Axillary* Kind *Raceme*

CALYX Color *Green* Form *Imbricate* Insertion *On Receptacle*

SEPALs Number *5* Shape *(Plicate) ovate* Estivation *Plicate*

COROLLA Color *Purplish* Form *Sabrate* Insertion *On Receptacle*

PETALS Number *4 joined together* Shape *Spatulate* Estivation *Plicate*

STAMENS Number *4* Length *1/2 of an inch* Insertion *On Corolla*  
 Filament *Slender* Anthers (a) Attachment *adnate* (b) Opening *lengthwise*

PISTILS Number *1* Kind *Compound* Style *1/2 of an inch long*  
 Stigma (a) Number *2* (b) Shape *Thread like*  
 Ovary (a) No. of cells *1* (b) Placentation *axillary* (c) No. of ovules *Many*

FRUIT Kind *Seed*

Order *Sabiatae* Genus *Hepata* Species *H. sledziana Benth*  
 Common Name *Ground Ivy* Location *Soudale* Date *5/1/17*

RUMFORD SUPPLY CO., LYNN, MASS.

5/2/17



# RECORD OF PLANT ANALYSIS

Copyright, 1906 by C. S. Jackson

ROOT Kind Tap Root

STEM Class Croceous Character Herbaceous  
 Mode of Growth Erect Height 12-15 inches

LEAVES Arrangement Alternate Part Without Stipules Kind Compound  
 Shape Kidney shaped netted veined palmately

FLOWERS Position Axillary Kind Raceme

CALYX Color Light Green Form Polysepalous Insertion On Receptacle

SEPALs Number 5 Shape Same shape Estivation Valvate

COROLLA Color Light Purple Form Tunnel shaped Insertion On Receptacle

PETALS Number 5 Shape Obovate Estivation Convolute

STAMENS Number 10 Length 20 or more Insertion On Ovary  
 Filament Stout Anthers (a) Attachment Adnate (b) Opening Lengthwise

PISTILS Number 1 Kind Compound Style 2 or more  
 Stigma (a) Number 5 (b) Shape Globular  
 Ovary (a) No. of cells 1 (b) Placentation Axillary (c) No. of ovules Many

FRUIT Kind Seed

Order Geraniaceae Genus Geranium Species G. maculatum, L.  
 Common Name Wild Geranium Location Lowell Date 4/30/17

RUMFORD SUPPLY CO., LYNN, MASS.

5/10/17



# RECORD OF PLANT ANALYSIS

Copyright, 1906 by C. S. Jackson

ROOT Kind *Fibrous*

STEM Class *Endogenous* Character *Herbaceous*  
 Mode of Growth *Erect* Height *1-2 feet*

LEAVES Arrangement *Alternate* Parts *Green* Kind *Simple*  
 Shape *Lance shaped parallel veined oblong*

FLOWERS Position *Axillary* Kind *Solitary*

CALYX Color *Light Green* Form *Polysepalous* Insertion *On Receptacle*

SEPAL Number *6* Shape *Lance shaped* Estivation *Valvate*

COROLLA Color *Greenish yellow* Form *Bell shaped* Insertion *On Receptacle*

PETALS Number *6* Shape *Obovate* Estivation *Convolute*

STAMENS Number *6* Length *1/2 of an inch* Insertion *On Receptacle*  
 Filament *Stout* Anthers (a) Attachment *Adnate* (b) Opening *Lengthwise*

PISTILS Number *1* Kind *Simple* Style *1/2 of an inch*  
 Stigma (a) Number *2* (b) Shape *Thread like*  
 Ovary (a) No. of cells *3* (b) Placentation *Pareetal* (c) No. of ovules *Many*

FRUIT Kind *Seed*

Order *Liliaceae* Genus *Uvularia* Species *U. grandiflora*  
 Common Name *Large Bellwort* Location *Woodale* Date *5/17/17*

RUMFORD SUPPLY CO., LYNN, MASS.

5/17/17



# RECORD OF PLANT ANALYSIS

Copyright, 1906 by C. S. Jackson

ROOT Kind Fascicled  
 STEM Class Exogenous Character Herbaceous  
 Mode of Growth Erect Height 1-2 ft high  
 LEAVES Arrangement Alternate Parts Green Kind Compound  
 Shape 3-lobed, netted-veined palmately  
 FLOWERS Position Terminal Kind Raceme  
 CALYX Color Green Form Polysepalous Insertion on Receptacle  
 SEPALs Number 5 Shape Saucer shaped Estivation Convolute  
 COROLLA Color Purple Form Salvifoliate Insertion on Receptacle  
 PETALS Number 4 Shape Obovate Estivation Convolute  
 STAMENS Number 25 Length 1/4 of an inch Insertion on Ovary  
 Filament Slender Anthers (a) Attachment Adnate (b) Opening lengthwise  
 PISTILS Number 4 Kind Simple Style 1/4 of an inch  
 Stigma (a) Number 4 (b) Shape Thread like  
 Ovary (a) No. of cells 4 (b) Placentation Paxillate (c) No. of ovules many seeded  
 FRUIT Kind Seed

Order Ranunculaceae Genus Delphinium Species lagarum Michx  
 Common Name Blue Adonis Location Sweden Date 5/1/17

RUMFORD SUPPLY CO., LYNN, MASS.

5/10/17



# RECORD OF PLANT ANALYSIS

Copyright, 1906 by C. S. Jackson

ROOT Kind *Tap Root* large and fleshy

STEM Class. *Exogenous* Character *Herbaceous*  
 Mode of Growth *Erect* Height *8-16 inches*

LEAVES Arrangement *(Whorled) Alternate* Parts *Green* Kind *Simple*  
 Shape *Kidney shaped, netted veined palmately*

FLOWERS Position *Terminal* Kind *Rosette*

CALYX Color *Green* Form *Polysepalous* Insertion *On Receptacle*

SEALS Number *4* Shape *Sance shaped* Estivation *Valvate*

COROLLA Color *White* Form *Salver shaped* Insertion *On Receptacle*

PETALS Number *4* Shape *obovate* Estivation *Valvate*

STAMENS Number *6* Length *1/4 inch* Insertion *On Receptacle*  
 Filament *Stout* Anthers (a) Attachment *Adnate* (b) Opening *Lengthwise*

PISTILS Number *1* Kind *Simple* Style *1/4 of an inch*  
 Stigma (a) Number *1* (b) Shape *3 lobular*  
 Ovary (a) No. of cells *1* (b) Placentation *Axillary* (c) No. of ovules *many*

FRUIT Kind *Seed*

Order *Rosaceae* Genus *Fragaria* Species *F. virginiana Mill*  
 Common Name *Wild Virginia Strawberry* Location *Lowdale* Date *4/30/17*

RUMFORD SUPPLY CO., LYNN, MASS.

5/10/17



# RECORD OF PLANT ANALYSIS

Copyright, 1906 by C. S. Jackson

ROOT Kind Fibrous

STEM Class Exogenous Character Herbaceous  
 Mode of Growth Erect Height 2-4 inches

LEAVES Arrangement Alternate Parts light green Kind Simple  
 Shape Obovate netted veined palmately

FLOWERS Position Terminal Kind Solitary

CALYX Color Brownish Form Polysepalous Insertion On Receptacle

SEPALs Number 4 Shape Lance Shaped Estivation Convolute

COROLLA Color Slight Purple Form Saber Shaped Insertion On Receptacle

PETALS Number 4 Shape Obovate Estivation Valvate

STAMENS Number 4 Length 1/6 of an inch Insertion On Corolla  
 Filament Slender Anthers (a) Attachment Adnate (b) Opening Longitudinal

PISTILS Number 1 Kind Simple Style Slender 5/8 of an inch  
 Stigma (a) Number 1 (b) Shape Globular  
 Ovary (a) No. of cells 2 (b) Placentation Axillary (c) No. of ovules Many

FRUIT Kind Seed

Order Rubraeae Genus Houstonia, L. Species H. patens Ell  
 Common Name Small Bluebells Location Happy Hollow Date 5/4/17

RUMFORD SUPPLY CO., LYNN, MASS.

5/10/17



# RECORD OF PLANT ANALYSIS

Copyright, 1906 by C. S. Jackson

ROOT Kind Fibrous

STEM Class Exogenous Character Herbaceous  
 Mode of Growth Erect Height 1-2 feet

LEAVES Arrangement Alternate Parts Green Kind Simple  
 Shape obovate netted veined palmately

FLOWERS Position Axillary Kind Raceme

CALYX Color Green Form Polysepalous Insertion On Receptacle

SEPALs Number 5 Shape  lance shaped Estivation Valvate

COROLLA Color Purple Form salver shaped Insertion On Receptacle

PETALS Number 5 Shape Obovate Estivation Valvate

STAMENS Number 5 Length to of an inch Insertion On Corolla  
 Filament Slender Anthers (a) Attachment adnate (b) Opening lengthwise

PISTILS Number 1 Kind Compound Style to of an inch long  
 Stigma (a) Number 2 (b) Shape 1 head like  
 Ovary (a) No. of cells 2 (b) Placentation Parietal (c) No. of ovules many

FRUIT Kind Seed

Order Polemoniaceae Genus Phlox L. Species P. maculata L.  
 Common Name Wild sweet Williams Location Huppy Hollow Date 5/2/17

RUMFORD SUPPLY CO., LYNN, MASS.

5/10/17



# RECORD OF PLANT ANALYSIS

Copyright, 1906 by C. S. Jackson

ROOT Kind Fibrous

STEM Class Exogenous Character Herbaceous  
 Mode of Growth Creeping Height 6-12 inches

LEAVES Arrangement Alternate Parts Dark Green Kind  
 Shape Obovate netted veined pinnately

FLOWERS Position Axillary Kind Raceme

CALYX Color light pink Form polysepalous Insertion on Receptacle

SEPALs Number 5 Shape same shaped Estivation valvate

COROLLA Color light pink Form salver shaped Insertion on Receptacle

PETALS Number 5 Shape Obovate Estivation valvate

STAMENS Number 10 Length 1/6 of an inch Insertion on ovary  
 Filament thick Anthers (a) Attachment adnate (b) Opening lengthwise

PISTILS Number 1 Kind Simple Style 4 of an inch  
 Stigma (a) Number 1 (b) Shape globose  
 Ovary (a) No. of cells 5 (b) Placentation axillary (c) No. of ovules 5

FRUIT Kind Seed

Order Crossaceae Genus Chrysoea L. Species E. repens, L.  
 Common Name Trailing Arbutus Location Hyline Woods Date 5/1/1917

5/1/17

RUMFORD SUPPLY CO., LYNN, MASS.



# RECORD OF PLANT ANALYSIS

Copyright, 1906 by C. S. Jackson

ROOT Kind Tap Root

STEM Class Exogenous Character Herbaceous  
 Mode of Growth Creeping Height 6-8 inches

LEAVES Arrangement Alternate Parts With Stipules Kind Simple  
 Shape Heart-shaped and kidney shaped mottled and palmately

FLOWERS Position (Axillary) Kind Solitary

CALYX Color Green Form Polypetalous Insertion On Receptacle

SEPALS Number 5 Shape  lance shaped Estivation Valvate

COROLLA Color White Form Trumpet shaped Insertion On Receptacle

PETALS Number 5 Shape Obovate Estivation Convolute

STAMENS Number 5 Length 1/6 of an inch Insertion On Receptacle  
 Filament Stout Anthers (a) Attachment Adnate (b) Opening Longitudinal

PISTILS Number 1 Kind Simple Style 1/2 of an inch  
 Stigma (a) Number 1 (b) Shape Thread like  
 Ovary (a) No. of cells 1 (b) Placentation Axillary (c) No. of ovules Many

FRUIT Kind Seed

Order Violaceae Genus Viola Species V. blanda Wild  
 Common Name Sweet White Violet Location Happy Hollow Date 5/2/17

RUMFORD SUPPLY CO., LYNN, MASS.

5/10/17



# RECORD OF PLANT ANALYSIS

Copyright, 1906 by C. S. Jackson

ROOT Kind Fibrous

STEM Class Crucigerous Character Herbaceous  
 Mode of Growth Erect Height 6-12 inches

LEAVES Arrangement Alternate Parts Pale Green Kind Simple  
 Shape  lance shaped netted veined palmately

FLOWERS Position Axillary Kind Solitary

CALYX Color Green Form Polysepalous Insertion On Receptacle

SEPALs Number 5 Shape  lance shaped Estivation Valvate

COROLLA Color White Form Salver shaped Insertion On Receptacle

PETALS Number 10 Shape Obovate Estivation Valvate

STAMENS Number 10 Length 1/8 of an inch Insertion On Receptacle  
 Filament Slender Anthers (a) Attachment Adnate (b) Opening Lengthwise

PISTILS Number 1 Kind Compound Style 1/2 of an inch  
 Stigma (a) Number 3 (b) Shape Thread like  
 Ovary (a) No. of cells 1 (b) Placentation Axillary (c) No. of ovules Many

FRUIT Kind Seed

Order Primulaceae Genus Trentalis, L. Species T. Americana Pursh  
 Common Name STAR flower, Chick Weed Location Happy Hollow Date 5/2/17

RUMFORD SUPPLY CO., LYNN, MASS.



5/10/17

# RECORD OF PLANT ANALYSIS

Copyright, 1906 by C. S. Jackson

ROOT Kind Tap Root, large and fleshy  
 STEM Class Endogenous Character Herbaceous  
 Mode of Growth Erect Height 16 inches  
 LEAVES Arrangement Whorled Parts Elliptical Kind Simple  
 Shape Obovate, Pointed Pinnately Veined  
 FLOWERS Position Terminal Kind Solitary  
 CALYX Color            Form            Insertion             
 SEPALs Number            Shape            Estivation             
 COROLLA Color Green & Brown Form Sabrate Insertion On Receptacle  
 PETALS Number 1 Shape Heart shaped Estivation Convolute  
 STAMENS Number 6 Length 1/2 of an inch Insertion On Ovary  
 Filament            Anthers (a) Attachment            (b) Opening             
 PISTILs Number 1 Kind Compound Style 1/2 of an inch  
 Stigma (a) Number 1 (b) Shape Round  
 Ovary (a) No. of cells 2 (b) Placentation Basal (c) No. of ovules Many  
 FRUIT Kind Seed

omit

Order Cruciferae Genus Arisaema Species A. triphyllum, Torr  
 Common Name Jack-in-the-pulpit Location Bedale Date July 10, 1917

RUMFORD SUPPLY CO., LYNN, MASS.



5/23/17

# RECORD OF PLANT ANALYSIS

Copyright, 1906 by C. S. Jackson

ROOT Kind Fibrous

STEM Class Cotyledonous Character Herbaceous  
 Mode of Growth Erect Height 2-3 ft in height

LEAVES Arrangement Terminal Parts Green Kind Compound  
 Shape Pinnately lobed

FLOWERS Position Axillary Kind Solitary

CALYX Color Green Form Polysepalous Insertion On Receptacle

SEPALs Number 5 Shape Lanceolate Estivation Valvate

COROLLA Color Yellow Form Salver shaped Insertion On Receptacle

PETALS Number 5 Shape Obovate Estivation Convolute

STAMENS Number Many Length 7 of an inch Insertion On Ovary  
 Filament Slender Anthers (a) Attachment Adnate (b) Opening Longitudinal

PISTILS Number 3 Kind Compound Style 7 of an inch  
 Stigma (a) Number 6 (b) Shape Thread like  
 Ovary (a) No. of cells 2 (b) Placentation Axillary (c) No. of ovules Many

FRUIT Kind Seed

Order Ranunculaceae Genus Ranunculus Species R. acris L.  
 Common Name Buttercup Location Woods Date July 1917

RUMFORD SUPPLY CO., LYNN, MASS.

5/23/17



# RECORD OF PLANT ANALYSIS

Copyright, 1906 by C. S. Jackson

ROOT Kind Tap Root  
 STEM Class Herbaceous Character Ergogenic  
 Mode of Growth Erect Height 1 1/2 feet  
 LEAVES Arrangement Alternate Parts Green Kind Compound  
 Shape made up of 5 deeply cut leaflets notched toward the tip  
 FLOWERS Position Axillary Kind Terminal  
 CALYX Color Green Form Polysepalous Insertion on Receptacle  
 SEPALS Number 3 Shape Obovate Estivation Convolute  
 COROLLA Color Purple Form Salver-shaped Insertion on Receptacle  
 PETALS Number 6 Shape Obovate Estivation Valvate  
 STAMENS Number Many Length 1/2 of an inch Insertion on Receptacle  
 Filament Stout Anthers (a) Attachment adnate (b) Opening longitudinal  
 PISTILS Number 1 Kind Compound Style 1/2 of an inch long  
 Stigma (a) Number 2 (b) Shape Thread like  
 Ovary (a) No. of cells 1 (b) Placentation Parietal (c) No. of ovules Many  
 FRUIT Kind Seed

Order Hydrophyllaceae Genus Mertensia Species M. virginica, D.C.  
 Common Name Bluebells Location Higger Hollow Date 5/15/17

5/23/17

RUMFORD SUPPLY CO., LYNN, MASS.

