



Hunt Institute for Botanical Documentation
5th Floor, Hunt Library
Carnegie Mellon University
4909 Frew Street
Pittsburgh, PA 15213-3890
Telephone: 412-268-2434
Email: huntinst@andrew.cmu.edu
Web site: www.huntbotanical.org

The Hunt Institute is committed to making its collections accessible for research. We are pleased to offer this digitized item.

Usage guidelines

We have provided this low-resolution, digitized version for research purposes. To inquire about publishing any images from this item, please contact the Institute.

Statement on harmful and offensive content

The Hunt Institute Archives contains hundreds of thousands of pages of historical content, writing and images, created by thousands of individuals connected to the botanical sciences. Due to the wide range of time and social context in which these materials were created, some of the collections contain material that reflect outdated, biased, offensive and possibly violent views, opinions and actions. The Hunt Institute for Botanical Documentation does not endorse the views expressed in these materials, which are inconsistent with our dedication to creating an inclusive, accessible and anti-discriminatory research environment. Archival records are historical documents, and the Hunt Institute keeps such records unaltered to maintain their integrity and to foster accountability for the actions and views of the collections' creators.

Many of the historical collections in the Hunt Institute Archives contain personal correspondence, notes, recollections and opinions, which may contain language, ideas or stereotypes that are offensive or harmful to others. These collections are maintained as records of the individuals involved and do not reflect the views or values of the Hunt Institute for Botanical Documentation or those of Carnegie Mellon University.

About the Institute

The Hunt Institute for Botanical Documentation, a research division of Carnegie Mellon University, specializes in the history of botany and all aspects of plant science and serves the international scientific community through research and documentation. To this end, the Institute acquires and maintains authoritative collections of books, plant images, manuscripts, portraits and data files, and provides publications and other modes of information service. The Institute meets the reference needs of botanists, biologists, historians, conservationists, librarians, bibliographers and the public at large, especially those concerned with any aspect of the North American flora.

Hunt Institute was dedicated in 1961 as the Rachel McMasters Miller Hunt Botanical Library, an international center for bibliographical research and service in the interests of botany and horticulture, as well as a center for the study of all aspects of the history of the plant sciences. By 1971 the Library's activities had so diversified that the name was changed to Hunt Institute for Botanical Documentation. Growth in collections and research projects led to the establishment of four programmatic departments: Archives, Art, Bibliography and the Library.

REVEAL FAMILY HISTORY

FF 8

San Diego - December, 1982

Another Holiday season and time once again to send good wishes and relate a few events of the past year.

With times as they are, I've worked but little in the past 12 months. I did get a few field botany assignments from a local environmental firm, however, and I spent a couple of months completing a range contract with the Toiyabe National Forest. The rest of the time I've been at the herbarium at the Natural History Museum.

In April, Valeria, her three daughters and I, spent 10 days on Kauai doing the things people do in Hawaii. Valeria still works at the bank, water- and snow skis with her family. Lately she's been sewing for daughters and grand daughters, an activity that sometimes frustrates her to no end.

This year I have put my photo collection into proper order, and have worked on our family history to supplement, in a small way, the valued work of a relative, Mary Shannon, of Colorado.

Son Jim is still with the University of Maryland botany department; son Jon continues at Keystone as manager of Arapaho Basin ski area in the Rockies west of Denver. Jim's wife, Rose Broome, is back into botany, finishing work under a grant begun several years ago. Jon's Marie-Chantal is wife-mother-ski instructor all at the same time, so she is a very busy person. Jon expects to be a member of the Mount Everest expedition early next spring and is training hard for that great adventure.

Grandson Mark is now 21 and married to a girl named Donna who I have not met. He is working to become a managing chef in a restaurant. Grandson Darin, 18, is with his mother Caroline and stepfather Don McCaffrey. He is a drummer in a rock band. All live in Sacramento. Grand-daughter Kimberly remains in Provo with her two children. Grandson Stephan--Jon and Marie-Chantal's son--is now 2, going strong and a joy to be with. Their Grandmother Arlene continues in Bridgeport as Mono County Librarian. Jim phoned her recently and caught her just as she was hurrying off somewhere.

It was my good fortune, this fall, to spend 3 weeks in Europe with Jon, Marie-Chantal and Stephan, and 5 days in Maryland/Washington DC with Jim and Rose. It was an overwhelming experience. I came home grateful that I could be with them awhile for a glimpse of their fascinating worlds that are so different from my own.

In September, my friend and co-worker, Reid Moran, curator of the herbarium, retired and left the Museum to make his home with friends on a farm near Montgomery Creek, California. I am among the many who will miss him. All wish him well.

May 1983 be a great year for everyone....

Two Summit County men to climb Mt. Everest

by Michael Collins
Sentinel Editor

On March 2, two very different Summit County men will leave the United States with one goal—to climb Mt. Everest.

BOB CRAIG, 57, is the expedition leader and a man with experience on some of the world's

toughest mountains. Craig has been tested and altitude proven.

Jon Reveal, 38, is not. Reveal is a follower and has never climbed anything like Everest. Reveal is basically a rookie to high expedition climbing.

In their path stands a 29,000 foot mountain and their own

weakness. Everest has been climbed many times in the past. However, the '83 Everest team's route has never been undertaken without oxygen.

THE EXPEDITION team consists of Americans and has some features rare to mountain climbing groups. The team will climb the West Ridge of the mountain from Tibet without oxygen. The West Ridge is seldom climbed because it requires a permit from the Chinese government.

Through various contacts, the Everest team was able to obtain the permit after a two year wait. March 2, the 17-man team will start its assault.

An added attraction to the expedition may be the first live television broadcast from the Everest summit. Expedition leader Craig has been negotiating with ABC for the rights to broadcast a signal from the mountain top. If an agreement is reached the contract should help defray the expedition's \$300,000 price tag.

CRAIG HAS been the confirmed expedition leader since the early planning stages. Reveal, Arapahoe Basin ski area manager, said he made a formal request to

Craig after learning of the climb. At a meeting of the American Alpine Club, Reveal was voted along for the climb.

"I always thought if I ever got the chance to climb Everest, I would never pass it up," Reveal said.

Reveal has scaled mountains before, but mainly in warm weather, dry climbing. He admits he has never climbed on ice before but says he will be ready for Everest when he gets there.

He has trekked in Nepal, making his way to 20,000 feet on an easy walk rather than the brutal climb of an ice-covered Everest.

MEN HAVE never been able to explain exactly why they climb mountains. Some probably climb to satisfy an ego, others to test their limits and still others for fame.

Reveal says he wants to climb Everest because "I enjoy being in mountains." He says he wants to see if he can do it, but that he wants to "be with the mountain" rather than challenge it.

"I **REALLY** enjoy being with mountains but I don't like to challenge them," Reveal said. "I don't feel you can challenge a mountain. You will be long gone

and the mountain will still be there. Instead you have to find it's achilles heel and through skill and ingenuity work your way up."

"you're too small to change any power that the mountain may have. If nature says 'no, you can't do it today,' then you can't do it," Reveal explained.

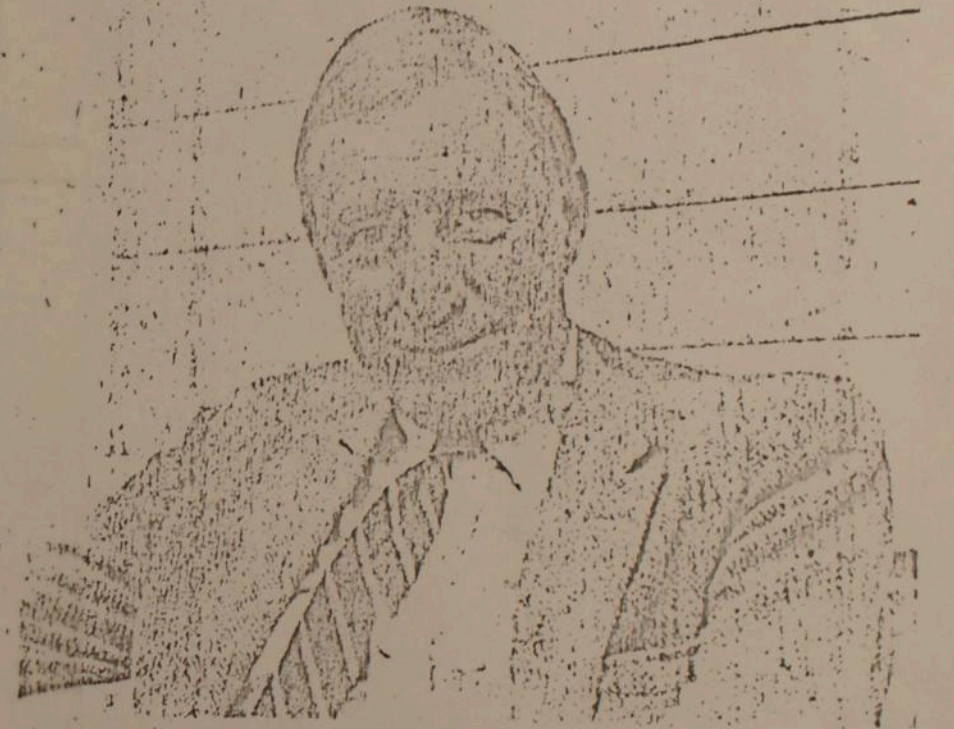
According to Reveal, without proper respect for "Mother Nature," nature will win.

"You can take the attitude that I'm going to make it even if it kills me and it will," Reveal said. The climber asserted the mountain must be attacked with respect, skill

Please see MT. EVEREST page 12



Jon Reveal



Bob Craig

Summit Sentinel 19 Feb 83
Wed. Pgs - Feb 1983 from Jan

Lousy picture of Jon 27

MT. EVEREST: Craig, Reveal head for Summit

MT. EVEREST from page 1

and a knowledge of one's limits. MOUNTAIN climbing and death are closely related. Craig was on an ill-fated 1953 K2 expedition and in later years on an expedition to the Parmirs. Death was a close companion on the expeditions.

PAT O'DONNELL was a Keystone vice president until three years ago when he returned from a disaster-plagued trip to Annapurna in which several members of his party were killed.

Yet O'Donnell, who now works as an education executive in California, was signed up for the Everest trip. Only a leg injury from a bad fall in Peru over the summer kept him from going.

Why would O'Donnell, who has seen so much death, again take the risk?

Reveal answers: "Climbing is like being dumped by a beautiful woman. You swear you'll never fall in love again until the next woman comes along."

REVEAL ALSO takes a positive view of his survival on Everest.

"I've never felt as if I'm going to Everest to die or sacrifice myself," he says. "The way I go about climbing is with a survival instinct and I plan to come back alive. You always have the chance to reduce the odds (of getting hurt or killed)."

He says his wife, Marie-Chantal

understands his reasons for going to Everest. Her father, a Frenchman, is a mountain climber and has been climbing the Matterhorn since he was 16-years-old. Her mother is the president of the CAF—the French Alpine Club.

To prepare for the climb, Reveal is running every morning and working with weights at night. He says he has been making personal sacrifices in order to get his body back into shape.

"It isn't easy to get back into shape after six years of abusing your body," Reveal says.

ACCORDING to the Arapahoe Basin manager, his work schedule at the mountain keeps him busy from 7 a.m. to 7 p.m. He trains during his few off hours, starting with a long run at 5 a.m. and ending with weight lifting before bed.

Craig jokingly says Reveal is running too hard and needs to put on weight. Reveal is obviously aware that as the expedition's rookie, he must be ready.

"I'm going to make sure that I'm not a burden to anyone," Reveal says.

The climber downplays his role on the journey, joking that he is worth \$3 or \$4 a day to the group.

According to Reveal, on the Nepal side of Everest Sherpas and high altitude guides are common and can be hired at low cost. But

on the Tibetan side there are no Sherpas or guides. To replace them, members of the team will carry the loads from camp to camp. Reveal is one of the secondary climbers who were chosen mainly for their background in climbing and physical strength. Reveal will never see the summit of Everest.

REVEAL SAID the climb will have an interesting twist. In 1953, according to Reveal, the heroics of young Bob Craig saved several lives on K2 and made Craig a hero in climbing circles. An experienced member of that climb was Charles Houston, a physician specializing in high altitude medicine.

Now, 30 years later, an older and experienced Bob Craig will lead an expedition with Robin Houston, 34, as the climb's doctor. Robin is the son of Charles Houston.

The expedition is loaded with extraordinary personalities. Craig is internationally respected not only as a climber but also as an administrator and thinker. He is president of the Keystone Center for Continuing Education and has also been president of the Aspen Institute think-tank.

Galen Rowell and Kim Schmitz, two of the world's finest climbers, are also on the team along with World Champion speed skier Steve McKinney. Another excellent

climber, Jeff Lowe, had to drop out of the expedition because of business commitments.

CRAIG SAYS the 17 members of the team are the strongest group of American climbers to ever undertake Everest.

The team will leave San Francisco on March 2 for Beijing (Peking). From there, the team will fly to Lhasa, the capital of Tibet and then will drive to Rongbuk. From there yaks will take the team's equipment to Truckhead, where the base will be established. Elevation at Truckhead is 20,000.

Reveal said Rongbuk is a high altitude town with a monastery. The land is very arid because Everest acts as a barrier to Indian Ocean weather patterns. The Tibetan side of Everest also allows for a higher base than Nepal where it takes weeks just to reach the mountain's base.

Truckhead will be the base from which a series of camps will be established. Craig says he is expecting to set up five or six camps.

Although Craig is the expedition leader, he won't grab an ice axe and lead the way. Instead, he will establish himself at a camp and make sure the climbers are supplied with what they need. He

will also make the major decisions for the assault; who does what and whether or not to continue. While mountaineering is a physical sport, it is a chess game of intellectual thinking, pitting man against a huge and unforgiving opponent.

The actual climbing leader is Rowell, who at 40 has climbed all over the world and written books on his experiences.

Once camps are established, Craig will determine which climbers are strong enough to make the final summit assault. The team will be limited to only the strongest. Neither Craig or Reveal have any chance of making the final assault, an assault of which Craig says the last 2,000 feet are the toughest.

BEFORE THE final assault, Craig is planning to send the summit team back to lower altitude for a few days of recovery and relaxation before the final summit approaches.

One of the problems of high altitude climbing without oxygen is the toll on the human body. In order to have the strongest final team possible, a precautionary retreating is planned.

The effects of high altitude have brought an interesting corporate sponsor to the scene. Craig says it

is possible Bristol-Meyers may contribute to the expedition.

The corporation makes Bayer aspirin, which the climbers will use regularly to ward off blood clots. At high altitude blood tends to puddle in the body. Aspirin reduces coagulation and therefore reduces the risk of clotting.

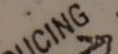
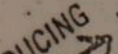
THE FINAL summit assault is planned between April 20 and May 20. The team is expecting to return to the states June 1.

Though the \$300,000 expedition price tag seems high, Craig said it is very inexpensive when compared to the budget of the massive groups of European mountain climbers.

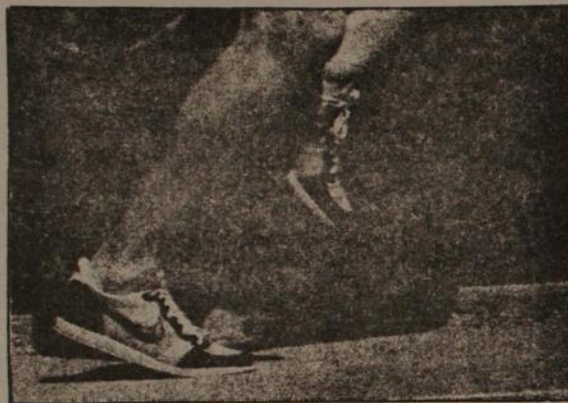
However, the group is still seeking money for the expedition, although Craig says they are planning to go no matter what.

Both Craig and Reveal are making final preparations for the trip. Reveal, the younger climber, talks about the climb like a kid getting ready to go to Disneyland while Craig attacks it with controlled, business-like obsession. Neither of the men can really explain why he wants to go. They just want to.

Which is really the only reason that makes sense.


Buying

Newest Truck Center

MIDWEEK EDITION



**Run, run, run:
Tracksters finish
high at state**
(see pages 8, 9, 10)

**Mt. Everest climb
sobers Jon Reveal's
outlook on life**
(see pages 6 & 7)



Boxholder

The Summit Sentinel

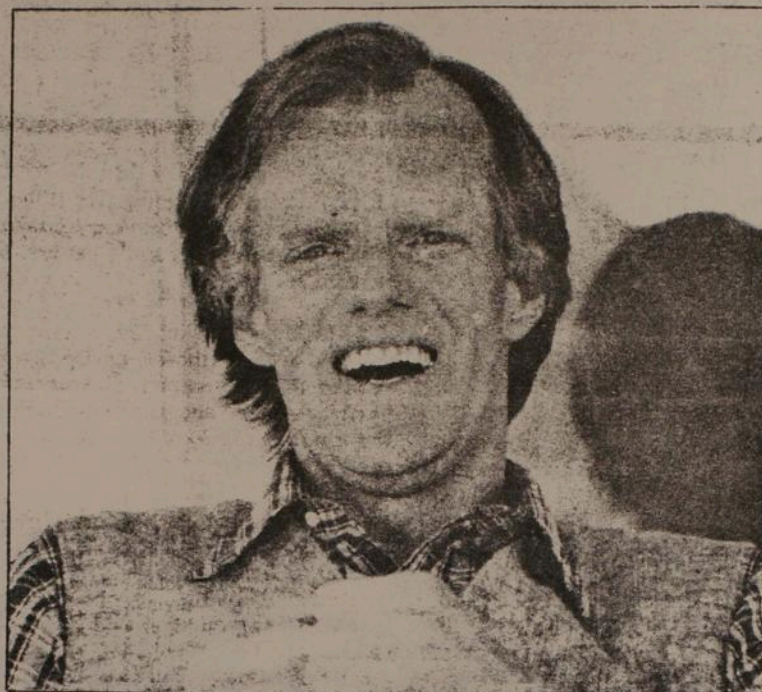
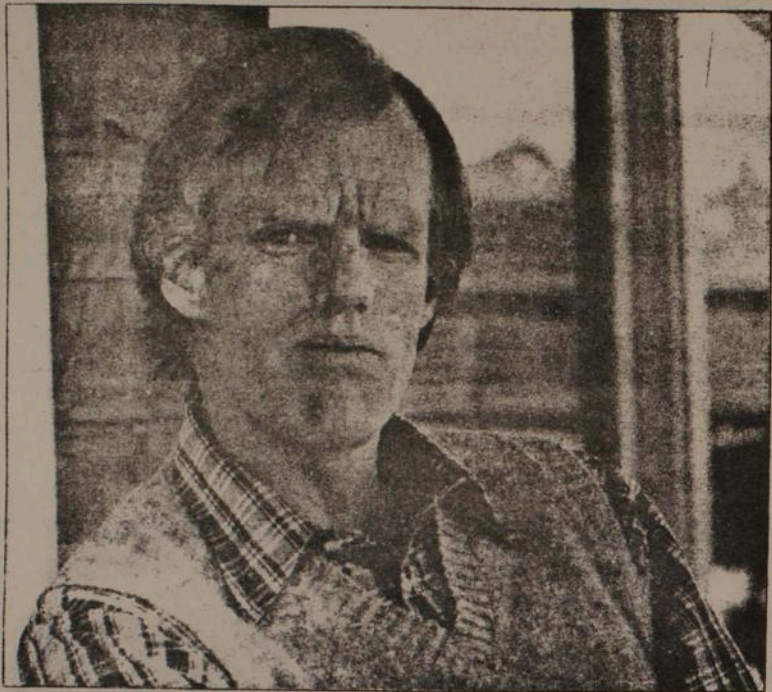
Every Wednesday & Friday

25¢

Volume 16, Number 78 468-2585

Covering Summit County, Colorado

Wednesday, May 25, 1983



Mt. Everest climb proves life's harsh realities

by Michael Collins
Sentinel Editor

Jon Reveal looked out over the mountains toward Arapahoe Basin this week, two 14,000 foot peaks looming in the background. Less than a month ago he stood on the side of a mountain more than twice as tall as Summit County's highest. His tanned face reflected the awe of the experience.

Reveal, a Keystone employee, has returned from a trip to Mount Everest. He participated as a carrier for an American assault of the mountain from China. The group, although unsuccessful, was attempting to become the first team ever to climb Everest without using oxygen.

The Everest experience has matured the 39-year-old Reveal. Less than four months ago he spoke excitedly of the trip, and while keeping the voyage in perspective, nonetheless, could not hide his pleasure at having been accepted as part of the team.

Now back from his adventure, Reveal said he isn't sure he made the best decision in going on the Everest climb. "From where I sit now the liabilities on the ledger don't balance out," he said.

Perhaps a reason the climb changed Reveal's outlook on the mountain lies in the fact it was, "to coin a phrase of the '60s, less of a religious experience," he said. Everest proved to be a world of harsh physical realities instead of a mystical awakening for the Summit County resident.

HOWEVER, Reveal said he learned about life. "Life is real," he explained, "and there is no bull; most people don't realize that until just before their car goes off a cliff."

While Reveal admitted he learned something about himself every day on the mountain, he cannot quell doubts as to why he went. He questioned the trip versus staying and working at Arapahoe Basin where he was ski area manager.

"I learned I really like to be with my wife and son," Reveal said. "I also learned I'm not an expedition climber. I can't help thinking I might have been more productive running Arapahoe Basin than I was with the 16 people on the climb. I think I could have done more good running Arapahoe Basin than I could doing the egotistical thing for myself."

Reveal, a former professional ski racer, trained for his expedition but said he never imagined how harsh the trip would be. Prior to going he made daily early morning runs around Lake Dillon and lifted weights.

"I can't imagine what it would have been like if I hadn't trained," Reveal said.

Slender yet very muscular, Reveal would be the envy of almost any 30 year-old, yet the climber found the going at over 20,000 feet incredibly difficult even for someone who has spent a good deal of his life in high altitudes.

REVEAL HELPED carry 4½ tons of expedition equipment onto the mountain. Heavy snow caused the group to establish a lower base camp than originally planned and prevented Reveal from climbing over 22,000 feet. The Keystone resident helped move the expedition's gear from camp to camp, each time the altitude becoming more of a problem.

He made 16 carries between camp one and two, elevations 18,500 to 19,700 feet, in 16 days, with packs ranging in weight from 40 to 70 pounds in an atmosphere

so thin that walking is very difficult, not to mention with a heavy pack on a sheer ice face.

Although Reveal said he acclimated amazingly fast, his first few carries over 20,000 feet floored him.

"I was told in order to get to 22,000 feet you have to go slow, about six breaths every step. If you can't make it in that you won't get back down before dark," he counted. "I got up to 21,800 feet and crawled over the edge of the headwall and couldn't breathe. I couldn't get any energy back into my body."

Breathing wasn't the only hard part of the expedition. According to Reveal, the climbers were besieged by bad headaches, weight loss, loss of appetite and the inability to sleep.

Although the climbers ate three meals a day, and according to Reveal, the food was excellent, he lost his appetite and had to force feed his food.

"Everything tasted like cardboard," he said. "It tasted like eating your Snickers bar with the wrapper still on."

REVEAL AND mountaineering-speed skier Steve McKinney took

skis along with the hope of possibly skiing some of the mountain's chutes. They were to find only ice. Reveal blames the winds, which roar up to 100 mph, for cleaning the snow out of the chutes.

Night on the side of Everest was, according to Reveal, different every evening. Some nights the climber would get completely dressed in his tent, fearing the wind would knock it over. Other nights, sheet lightning illuminated the sky between nearby mountains, lighting up the entire mountain bowl and showing brief glimpses of the black and white landscape.

"One night I woke up and thought there was fire burning," Reveal said. "When I was a boy we had a fireplace in our house and we would burn a lot of pine. It would make popping sounds when the pitch burned and I woke up thinking there was a fire. I realized it was only the glacier moving and popping as it closed and opened up."

Reveal, acting as human shuttle for the expedition, was an American sherpa taking the place of the high altitude guides many expeditions use for such work.

Always a team player, Reveal did his job without considering himself a member of the Summit party and said he did his job as well as he could.

The carries were numerous as Reveal and his payload crept up the mountainside many times over. He said if there is one fear on Everest, it is of making a mental mistake that could kill.

"I THOUGHT a lot of my son, and his friends asking him where his father was," Reveal said. "I didn't want him to have to say his father died in a fatal fall on Everest. That wouldn't prove he had a very intelligent father, would it?"

While climbing from camp to camp Reveal allowed himself only five thoughts: of his son, his wife, himself, God or a single other option. Through his concentration, Reveal kept his mind focused and attempted to prevent a fatal mental error. He said if his mind strayed from a single thought he would stop and get it back on track before going on.

After going for two months with only a daily tea cup of water to serve for washing, brushing his

EVEREST 1983

Everest 83: The American Ascent of the West Ridge of Mt. Everest from Tibet

Our American expedition is preparing to undertake an exciting and unique challenge. We are going to Mt. Everest in the spring of 1983 from the Chinese side, via Tibet, to attempt the technically difficult West Ridge without the aid of oxygen apparatus.

"Style" has become an ever more important element of Himalayan mountaineering. Instead of laying siege the best contemporary expeditions now go lightweight with a minimum of personnel, porters and equipment to do that which was previously unthinkable without organization on a military scale. The 1983 American-Tibetan Mount Everest Expedition will attempt the West Ridge with a team of the finest American climbers and no native porters. This is the first American expedition to totally dedicate itself to an attempt of Mt. Everest without the aid of oxygen.

Everest has been climbed many times, but never on one of its hardest routes without the use of oxygen. In 1979 Reinhold Messner and Peter Habeler ascended Mt. Everest from the south without oxygen by utilizing the logistics and support of a large oxygen-equipped Austrian team. The 1983 American-Tibetan Everest West Expedition will undertake to do a technically difficult route totally without the aid of oxygen. It is an unprecedented and challenging undertaking.

Until quite recently, there was a controversy over whether climbing above 8,000 meters without oxygen apparatus subjects climbers to unacceptable hazards and is also tactically unsustainable

due to physical deterioration at high altitudes. The 1983 American-Tibetan Everest West Expedition is convinced that such an ascent can be made on Everest with style and ingenuity. We have taken great care in planning and assembling the best team possible for such ascent. Many of us have climbed together in the past and we share a feeling of comradeship and confidence for a successful expedition.

After traveling to Beijing (Peking), we will fly to Lhasa, the ancient capital of Tibet. We will drive overland to the bottom of the Rongbuk glacier, where Yaks will transport the bulk of



equipment from Truckhead to the Lho La (a col at about 20,000 feet on the west side of Everest dividing Tibet and Nepal). Advanced Base will be established here, and above this all carrying will be done by the team itself.

Instead of using any native personnel above the base camp, we will do all of the carrying and climbing ourselves. A group of our expedition members will take the place of high altitude porters. Their primary purpose will be to carry loads and

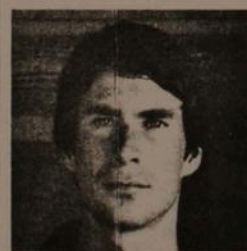
support the summit climbers up to 27,000 feet. While everyone will carry loads high, it is anticipated that climbers who have demonstrated strength for the summit effort will be returned to Lower Base to arrest high-altitude deterioration for a period of several days. They will then be moved rapidly into position for the final assault when all camps are securely established and weather seems favorable.

The 1983 American-Tibetan Everest West Expedition seeks substantial charitable support to fulfill its goals. Of the \$292,000 needed to fund the effort, approximately \$152,000 must be raised from outside sources. \$140,000 has thus far been contributed

directly or by equipment, foodstuffs, or in-kind services. The cost of mountaineering in China, and especially Tibet, is an expensive enterprise. However, we have kept the budget as fiscally-lean as possible. Our effort needs the support of all individual Americans and American corporations who believe in the tests and rewards of personal challenge. Climbing Everest in such a manner as we are attempting is one of the most satisfying and rewarding challenges remaining in the world of mountaineering. We hope you will support, and be a part of, this important pursuit.

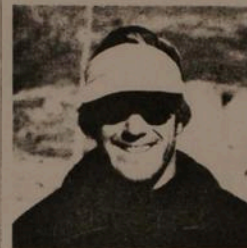


Gordon "Gus" Benner
San Francisco, Ca
Team Physician
Age: 44
Climbing Experience:
Sierra Nevada, Coast Range,
St. Elias, McKinley, Brooks
Range, Himalayas
Profession: Physician



Dave Breashears
New Center, MA
Expedition Cameraman
Age: 26

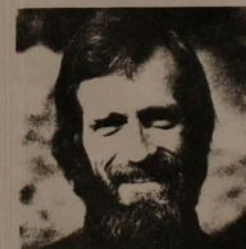
Climbing Experience:
Rockies, Alaska, China,
Cascades, Himalayas
Profession: Cameraman



Donald "Don" Castle
San Francisco, Ca
Age: 34
Climbing Experience:
Sierra Nevada, McKinley,
Alps, Cascades, New Zealand
Profession: CPA and
Economic Consultant



Robert "Bob" Craig
Keystone, CO
Expedition Leader
Age: 57
Climbing Experience:
Himalayas, Pamirs, Alps,
Andes, McKinley, Coast
Range, Canadian Rockies
Profession: Educator,
Research Center Director

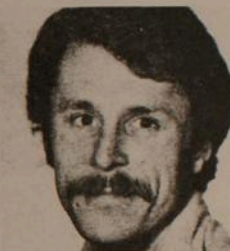


James "Jim" Donini
Leavenworth, WA
Age: 39

Climbing Experience:
Alaska, Cascades, Andes,
Patagonia, Himalayas, China,
Karakorum
Profession: Guide and Sales
Representative



Michael "Mike" Graber
Mammoth Lakes, CA
Age: 28
Climbing Experience:
Sierra Nevada, Antarctica,
Andes, Alaska, Cascades,
Rockies
Profession: Ski Patrolman and
Guide



Robin Houston
Seattle, WA
Team Physician
Age: 34
Climbing Experience:
Alaska, Rockies, Himalayas
Profession: Physician



Harold Knutson
Oakland, CA
Age: 40

Climbing Experience:
Himalayas, Andes, China,
Alaska, Sierra Nevada
Profession: Geologist



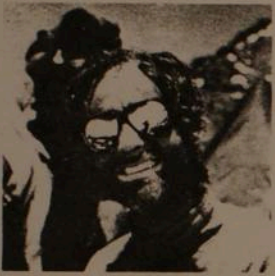
Jeff Lowe
Louisville, CO
Age: 33
Climbing Experience:
Pamirs, Karakorum, Alps, all
North American Ranges,
Himalayas
Profession: Guide and
Equipment Technical Advisor



John Martinek
San Francisco, CA
Age: 33
Climbing Experience:
Sierra Nevada, Rockies,
Andes, Alps, Himalayas,
China
Profession: Tibetan Scholar,
Author, Trekking Leader and
Guide



Steven "Steve" McKinney
Squaw Valley, CA
Age: 30
Climbing Experience:
Sierra Nevada, Cascades,
Alaska, Rockies, Himalayas
Profession: Ski Racer



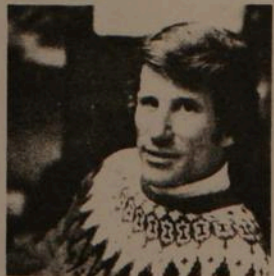
Patrick "Pat" O'Donnell
San Francisco, CA
Age: 39
Climbing Experience:
Himalayas, Alaska, Sierra
Nevada, Rockies
Profession: Educational
Executive



Jon Reveal
Keyston, CO
Age: 38
Climbing Experience:
Himalayas, Sierra Nevada,
Rockies
Profession: Ski Area Manager



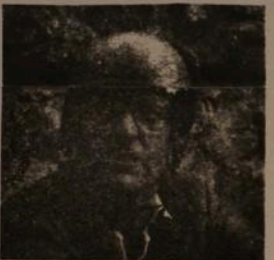
John Roskelley
Spokane, WA
Age: 33
Climbing Experience:
Himalayas, Alaska, China,
Karakoram, Pamirs, Andes,
Alps, Rockies
Profession: Manufacturer's
Representative, Lecturer and
Guide



Galen Rowell
Berkeley, CA
Climbing Leader
Age: 40
Climbing Experience:
Himalayas, China, Alaska,
Sierra Nevada, Rockies
Profession: Photographer,
Author, Guide



Kim Schmitz
Oakland, CA
Age: 36
Climbing Experience:
Himalayas, Sierra Nevada,
Alaska, Andes, Cascades,
Karakoram
Profession: Guide



Christopher "Chris" Wren
Beijing, China
Age: 39
Climbing Experience:
Himalayas, Africa, Alps,
Caucasus, Alaska
Profession: Chief
Correspondent (N.Y. Times)

The 1983 American-Tibetan Everest West Expedition will receive its charitable funding through the non-profit tax-exempt Keystone Center of Keystone, Colorado. Contributions will be accepted in any amounts from individuals, foundations, and corporations. It is hoped that individuals will contribute in amounts from \$25 to \$1,000, and foundations and corporations from \$1,000 to \$10,000. Contributors giving over \$500 will receive a personally autographed team photo and all contributors will receive an attractive pin with the expedition logo on it. Send your contributions to:

American-Tibetan Everest
West
Keystone Center
Box 38
Keystone, CO 80435

Thank you for taking pride in our expedition.

The American-Tibetan Everest
West
Expedition Members

teeth and drinking, Reveal said his first thought after getting off the mountain was to be clean again after weeks without taking off his clothes.

"One day I came back from a climb, I had worn my snow suit and parka because it looked pretty bad out. I sweated hard and when I got back to my tent, sat down to take off my parka and realized something in the tent stunk. I finally realized that it was me that smelled so bad," Reveal said. "That sort of thing was hard to live with."

Reveal learned this week that the expedition has been called off and that the group, apparently healthy and intact, had started down. They

had gotten to slightly over 26,000 feet, 3,000 feet short of the summit.

THE CLIMBER said he doesn't feel any loss by not being part of a successful Everest team. "I read once that an expedition is successful on Everest if everyone lives."

Reveal also puts Everest in perspective as few could who have not climbed it and said the mountain cannot be competed against.

"How do you compete against a mountain?" he asked. "How can you beat something that will still be there after you die?"

The Keystone resident added that while Everest is admittedly the

Super Bowl of mountain climbing, it doesn't mean the world's best climbing occurs on its faces.

"The best climbing in the world could be happening in the canyons down there," Reveal said, looking toward Montezuma road.

The Summit County resident has returned from what is certainly a once in a lifetime feat. He is home again with his wife and son and rethinking the events of the past four months.

For Jon Reveal, having gone to Everest once is enough. He probably won't return—because it is there.



Jon Reveal—back from Everest

Mt. Everest climb highlights

Jon Reveal and Bob Craig, two Keystone men, embarked in early March to climb Mount Everest with 15 other American climbers.

They were a study in contrasts. Craig, a mountaineering legend and the team leader, is in his late 50s. He has been in the Himalayas and on Everest before.

Reveal, a former professional ski racer, had climbed some ice and rock but nothing like Everest. He is also 20 years Craig's junior. Along with other climbing greats Galen Rowell, John Roskelley and Steve McKinney of skiing fame, the expedition left San Francisco.

Its members, each with a carefully designated role, were trying to become the first American team to climb the mountain without oxygen. Although another team recently made the summit

without oxygen they had taken bottled air with them and climbed from the Nepalese side of the mountain.

Reveal's team came from China on the west ridge, a less attempted route because of political difficulties climbers have had in getting permits from the Chinese government.

•March 9: The expedition left for Peking from San Francisco.

•March 22: After making their way to the mountain the team set Base Camp at 18,700 feet, technically not even on the mountain. Heavy snow prohibited a higher Base Camp.

•A couple days later Camp 1 was established after 4½ tons was pulled through the snow by yaks.

•First week of April: Camp 2 was established at 19,700 feet.

•Camp 3: About eight days

later Camp 3 was set around April 11. Seven days of snow pinned down the climbers and halted forward progress. Camp 3 was located at 22,000 feet.

•Camp 4: The camp was finally established on April 20 at 23,900 feet.

•Camp 5: A site was located for Camp 5 on April 27. Again snows stopped movement. The camp was set at 25,200 feet.

•May 2: Reveal and Don Castle left Camp 2 to return to Peking.

•Camp 6: Roskelley and Kim Momb discovered a location for Camp 6 and moved to that point to await a summit assault. The attempt, for as yet unknown reasons, never occurred and the climbers were called back. Reveal said he confirmed the cancellation Monday and said everyone is healthy. The reason for abandoning isn't known.

MEMORIAL DAY TIRE SALE

Make This Your Time To Save: Goodyear Gives You A Choice!

<p>ARRIVA RADIAL FOR IMPORTS</p> <p>\$41</p> <p><small>P155/R0R12 Blackwall Plus \$1.41/FET No trade needed</small></p>	<p>WRANGLER RADIAL</p> <p>\$98.17</p> <p><small>27850R14 Blackwall Plus \$3.08/FET No trade needed</small></p>	<p>BRAKE SERVICE</p> <p>YOUR CHOICE</p> <p>\$88.00</p> <p><small>Additional parts and services extra if needed</small></p>
<p>\$46</p> <p><small>P155/R0R13 Blackwall Plus \$1.51/FET No trade needed</small></p>	<p>\$113.76</p> <p><small>91515 Blackwall \$4.01/FET No trade needed</small></p>	<p>OR</p> <p>\$127.29</p> <p><small>10R15 Blackwall \$4.24/FET No trade needed</small></p>

MAINTAIN STOPPING POWER

FREE!

Reveal returns early from Everest trip

By ANDREW BIGFORD

While enduring two gritty months without a shower on the flank of the highest peak in the world, Jon Reveal was grateful he didn't have to look at himself.

"I was very fortunate I didn't take along a mirror," Reveal said on Tuesday, shortly after he had arrived back from Tibet where he participated in the yet unfinished Everest '83 expedition. Reveal, who has returned to his relatively sedate duties as mountain manager at Arapahoe Basin, was one of 17 climbers on the trip, which was led by Robert Craig of Keystone. Craig and a dozen others have remained at Everest and are continuing in their attempts to place at least a couple of the climbers on the 29,028-foot peak — a feat they hope to accomplish by the end of this month.

"It was a great experience, but I'd never do it again," said Reveal, who shed 24 pounds during the excursion. "I just don't have the time in my life, 70 days is just too long," the former professional ski racer, instructor and accomplished climber said.

Although mildly disappointed because he climbed only to the 22,000 foot mark — he had hoped to reach the 26,000 foot elevation — Reveal was content to have his "name in the books" as one of the 2,000 or so climbers who have walked on Mount Everest. Reveal said an ankle injury suffered early in the expedition kept Craig, the director of the Keystone Center, from surpassing the 20,000 foot mark, but he's "doing fine"

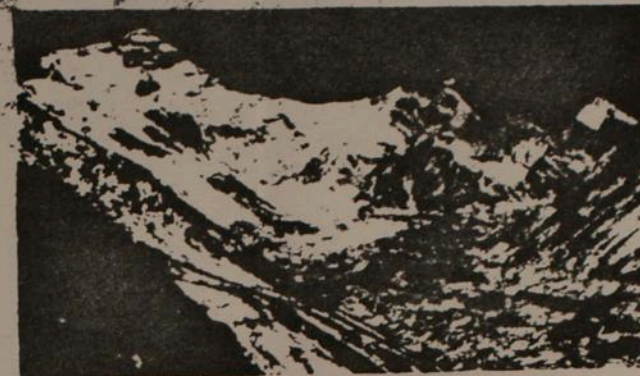
and is directing the contingent's strategy from the lower camps.

If it weren't for some bad luck, Reveal may have achieved his goal, especially since he incurred relatively few physical problems in adjusting to the high altitudes. Many visitors to Summit County never seem to agree with the 10,000-foot altitude, and at more than twice that height the problems increase ten-fold. But other than a "couple of headaches," Reveal said he incurred little aggravation, due in no small part to his regimented training program which had him jogging around Lake Dillon once a week in preparation for the trip.

One major obstacle came in the form of two back-to-back snow storms which kept the climbers in their tents for a week, but otherwise the weather cooperated, with temperatures at the higher elevations ranging from the teens to 30 below at night.

One fact that Reveal learned early was that skiing conditions at Everest are less than ideal. He had honed to ski a few low elevation avalanche chutes on alpineer equipment with Steve McKinney, the seven-time World Speed Skiing champion and brother of World Cup winner Tamara, but the only accessible terrain was covered with blue-ice. "Even when new snow had fallen, it would roll off (the slopes) immediately," he said.

International press coverage has recently focused on Mount Everest after the successful ascent of two Nepalese groups, an accomplishment Reveal called "incredible." But that expedition originated from the



MOUNT EVEREST

other side of the Himalayas in China, a path which doesn't include the more intense rope climbing encountered near the summit of the Tibet side. And while two of the Nepalese climbers completed the ascent without the aid of oxygen, the tanks were brought along in case of emergency and were utilized by other members. However, the theme of the Everest '83 expedition stressed "doing Everest the right way," and the American contingent decided against bringing any oxygen at all.

If some of the members do reach the summit — John Roskelly, perhaps the world's best climber, and his partner, Kim Momb, appeared at last word to be on the verge of the assault — the Everest '83 trip will undoubtedly be a huge success.

But whether that happens or not, it was a trip that Reveal will never forget; especially since he returned with more than 700 photographs of the journey.

Save 17% - or more - on your home and car insurance... with The Travelers Colorado Money Saver Plan



SUMMIT INSURANCE AGENCY, INC.

105 E. Adams / P.O. Box 583

Breckenridge, CO 80424 (303) 453-2402



Representing



THE TRAVELERS

More reasons to stay at...



The Village at Breckenridge

Adults \$3.00
Seniors 2.00
Children 1.00

Village Cinema

Movie Info.
Star.
453-8080

Friday, May 20th — Thursday, May 26th

One show at 8:00 p.m. only

THE REVEAL FAMILY

copy to Jim
" Dorothy Aug 1982

HISTORY OF GRAND FATHER REVEAL.

Born in Highland County Ohio in the year 1796. and was a farmer. he removed to Wapello County Iowa in the year 1832, while Iowa was yet a Territory. and settled on a Farm, Part of his farm was on the north and part on the South side of the Des Moines River, The River could be forded except during high waters which usually came in April and May, There was no Bridges there in the early days of Iowa, Grand Father hughed logs cut from the farm and built a raft in order to get across the River when the water was up. This brought travel to that point on the river to get across on their way from East to west, at that time People were moving to the Western countries for new land. this caused the Town of Ottumwa Iowa to be started on the North side of the River on Grand Fathers Farm, and before Grand Father died in the year 1898 there was quite a town built on his Farm, Also the County Fair grounds covering 80 acres of his land. Grand Father built a home of hughed logs cut from his farm Along the river, the house has (3) three large rooms, in which he lived until he died in the year 1898. This log house was still in use when the writer was in the fall of 1936, and the Town of Ottumwa Iowa had grown until it had covered most of Grand Fathers Farm on both sides of the River. Grand Father Reveal gave a 5 acre tract of land to the School District in the year 1834 on which a large (1) one room School house was built, and all school children for miles around went to that school, The School was built of hand made Brick, with stone foundation and stone window and door sills, Over the front entrance doors there is a stone 7 ft long 13" thick and 24" high, in which is cut the name Reveal School 1834. When the writer was therein the fall of 1936 this School was still in use and was in good condition.

* Thomas Reveal

* No information on his first name or names of his children except Clayborn dob 10 May 1831 (See Supplement) - 1. -

HISTORY OF FATHER REVEAL.

Name.	Born.	Married.	Died
Clayborn Reveal.	May 16 th 1831 Highland County Ohio.	Feb, 18 1855.	Dec 29 1920
Rebecca Jane McGlothlen.	July 10th 1837. Fountain Co Ohio.	"	Feb 30th 1917.
Children.	Born.		Died.
Thomas Jackson Reveal.	Aug 3rd 1856. Wappello County Iowa.		June 10th 1936.
Mary Rosetta	" Oct 4th 1859.	" " "	May 26th 1916.
Adam Albert	" Nov 18th 1861.	" " "	Feb 16th 1862.
Elezabeth	" Jan 23rd 1866.	" " "	Aug 10th 1936.
Prior S.	" Feb 22nd 1868.	" " "	Feb 2nd 1890.
John Lilburn	" May 25th 1870.	" " "	
Charles William	" Sept 24th 1874.	" " "	June 5th 1922.
Bertha May	" Aug 3rd 1877	" " "	

Father Reveal lived on a farm given to him by his Father 6 Miles north west of Ottumwa Iowa after he was married in 1855, until the spring of 1872 when he sold the farm and bought another farm 10 miles South West of Ottumwa Iowa. on which he lived and raised his famely. in the year 1887 he sold his farm and moved to Ottumwa Iowa, bought some lots on south monroe street. on which he built a (5) room house-Barn-and chickwn set out some fruit trees. kept some chickens, a cow, horse and biggy, and raised their own garden truck. here he and Mother lived until they died.

While Father Reveal was living on his farm north west of Ottumwa he gave the land and built a Cemetary known as the Reveal Cemetary, near the Reveal School house in which Grand Father and Grand Mother Raneal was Berried.

also Father and Mother Reveal. Adam reveal- Prior S. reveal.

Mary Roseta Reveal was Berried in Blakesburg Iowa.

Elezabeth " " " Loveland Colorado.

Charles William " " " Drake Illinois.

Thomas Jackson " " " LosAngles Calif.

HISTORY OF THE MCGLOTHLEN FAMELY.

Grate,Grate, Grand Father McGlothlen.

William McGlothlen, Father of Charles McGlothken, was of Irish decent, was born in Va: Removed to east Tenn, at the age of 15 years. He served throughout the war of the Revolution and also the war of 1812. Thus helping to gain the Independence of American colonies from the English and later the war to hold that Independence. He helped in settling Kentucky during the trouble for which service the State of Kentucky Deeded him (160) acres of land.

Great,Grand Father MCGlothlen.

Charles McGlothlen and Wife mooved from east Tenn, to Ohio on pack horses, were pioners in Ohio and when Indiana opened foe settlement they mooved to Wayne County Indiana, They lived in Wayne County and in Uego County only a short time, then they mooved to Fountain Counry Indiana. With the exception of a short time in Missouri, they lived in Indiana from 1804 to 1844 when they mooved to Iowa.

Grand, Father McGlothlen.

Thomas D. McGlothlen mooved from Fountain County Indiana to near Edyville Iowa (Wappello County,) in the fall of 1844 While Iowa was a territory. he was of Irish Decent on the Fathers and English and French on Mothers side. he was a life long Demecrat and a Faithfull Member of the Church of Christ.

When they came to Iowa he began at once to found a home for his Famelty undergoing all the inoonviences and hardships incedential to the settling of a new country. All goods had to be brought by Teams from the Mississippi River, it frequintly took two weeks to go to Mill.

(No Four)

He invested all he had in teams and other necessities to live and improve the land and he made rails at 50¢ per 100 to get the necessities of life. Here they lived and labored owning the farm for half a Century, The farm when sold in 1900 contained 411 acres and was one of the best farms in the County.

When Iowa became a State Grand Father McGlothken was elected to the first State Legislator.

Great, Grand Father McGlothlen. (Charles Mc G.)

Married in 1802 Jefferson County Tenn, and died Nov 10th 1850 in Wappello County Iowa.

Births when and where.

Charles McGlothlen born April 13th 1780 in Greenfric County Va:

Wife, Jane. " Oct " " Jefferson County Tenn.

(Children)

Elezibeth McGlothlen	Born	Feb 4th 1804	in Wayne County Indiana.
Rebecca J	"	Jan 4th 1806	" " " "
Nancy M.	"	Jan 30th 1808	" " " "
John D.	"	Dec 18th 1810	" " " "
George H.	"	Oct 20th 1812	" " " "
Serah M.	"	Nov 14th 1814	" " " "
* Thomas D.	"	Dec 10th 1816	" " " "
Mary M.	"	April 20th 1820	" Clay County Missouri.
Jane M.	"	Feb 12th 1822	" Uego County Indiana.
Jonathon	"	Aug 13th 1824	" Fountain County Indiana.
Eleanor	"	Oct 13th 1828	" " " "

Grand, Father McGlothlen.

Thomas D. McGlothlen. Born Dec 10th 1816 in Wayne County Indiana.

Wife) Serah Meek. ")ct 1817 " Loureance County Indiana.

Married Sept 15th 1836.

(Children)

* Rebecca J. Born July 10th 1837 Fountain County Indiana.

Mary J. " March 10th 1840 " " "

Nancy M. " March 26th 1842 " " "

Charles W. " Jan 4th 1844 " " "

Jacob Lilburn " Aug 11th 1845 Wappello County Iowa.

Milly Elenor " Jan 23rd 1847 " " "

John William " April 2nd 1849 " " "

Serah Elezibeth " Aug 13th 1851 " " "

Thomas Benton " Dec 15th 1853 " " "

Andrew Jackson " March 23rd 1856 " " "

George Marion " May 17th 1858 " " "

Benjiman F. " Aug 23rd 1860 " " "

Adolphus D. " Feb 6th 1862 " " "

* My grand mother on my fathers side

Written by John Lilburn Reveal (d.o.b. 25 May 1870)

following a visit to his childhood home in Ottumwa, Iowa
in 1936.

SUPPLEMENT TO THE
REVEAL FAMILY HISTORY

Notes on the Reveal and McGlothlen families from Census and other records in the LDS Genealogy Library - 1981 & 1982.

REVEAL State of OHIO. Families with Reveal surname.

1820 Census Index:

Reveal, Thomas Highland Co. 037 Salen Tsp.
William " " "

1830 Cen. Index

Reveal, Thomas Highland Co., Salem Tsp.
farmer - 8 sons; 2 daughters.
Reveal, William Highland Co., Salem Tsp.
farmer-5 sons; 4 daughters

1840 Cen. Index

Reveal, John Clin. Co. Clark tsp. 371
, William " " 368

1850 Census Hamilton Co., Dodson Tsp 274 (page 547)

Reveal, John 53 years
Polly 25 yrs (wife?)
Sally 17
Samuel 10
John 8
Cornelius J. 4
Abraham F. 1

Reveal, William Age 42 (Page 556)
Nancy age 40 wife
George 22
Elizabeth 19
Enos 17
Thomas ? 14
Lavina 10
James 7
William E. 3
John M. 1

1850 Census Clinton Co., Clark Tsp. page 489

*Reveal, George -- shown in the following context:

Terrell, John age 31 Farmer Value \$6000 born Ohio
Sindey 28, wife " "
Wm., age 6; Emma, age 4; Analiza, age 2 " "
Burch, Laurena age 26 Stonecutter born Indiana
Stackpole, Thos ----- " "
David Clark age 19 Laborer " Ohio
* Reveal, George 22 " "

REVEAL FAMILY--(continued)

OHIO (continued) Reveal surnames

1850 Census Index

Reveal, George	Clck Co.	489
James	James	HMW 3
	John	Hido 547
	William	Hido 556

1860 Census Index

Reveal, George	CLJF	200
Thomas	"	199
William	"	199

REVEAL FAMILY (Continues)

STATE OF INDIANA : Families with Reveal surname.

1820 Census Index

No Reveals listed

1830 Census Index

Reveal, Thomas Shel Co. 395 Sugar Cr. Tsp.

1840 Census Index

Reveal, Michael Hamil Co. 138 Noblesville Tsp. (p.211_)
 Thomas " "

1850 Census Index

Reveal, James Mari 428, Pike Tsp
 Joseph Hamil 025 Wash. Tsp
 Michael " 110 Noblesville Tsp.
 Moses " 035 Clay Tsp.
 Thomas " 110 Noblesville Tsp.

1850 Census Hamilton Co., Nobelsville Tsp. page 110 & 112

Reveal, Thomas	age 32	farmer	value \$300	born KY
Margaret	33	wife		b. VA
Elmira ?	16	in school		b. IND
Mary A.	9			b. "
Elizabeth	7	" "		b. "
William	4			b. "

Reveal, Michael	age 42	farmer	value \$1600	b. KY
Sally	39	wife		PA
Sarah	13	In school		Ill
? female	11	" "		Ind.
Michael	8	" "		Ind.
? male	6	" "		Ind.
Silas	4			Ind.
Lewis	1			Ind.

1850 Census Hamilton Co. , Clay Tsp. page 35

Reveal, Moses	age 39	farmer	Value \$1000	b. VA
Ruth Ann?	44			KY
Alexander	16	farmer - attends school		IND
George?	14	" "		"
Willis?	12	" "		"
? female	10			"
David	8			"
? female	5			"
? female	3			"

Reveal Family (Continues-) Reveal surnames

STATE OF INDIANA (continues)

1850 Census Hamilton Co., Washington Tsp. p. 26, family 346

Reveal, Joseph	age 55	Shoemaker	valaue \$150	
			birthplace unknown	
Jane	22	(wife?)	" "	"
Margaret	1		born IND.	
Reveal, James	age 25	farmer	value \$200	born PA
Margaret	23	wife		IND
Thomas	8			IND
William	5			IND

Reveal Family (Continues-)

STATE OF IOWA Families with Reveal surname.

1850 Census Index

Reveal, Thomas Wappello Co. 449

(No other Reveals listed in this index.)

1850 Census Wappello Co. District 13, page 449, family 681
(tape 442,946)

* Reveal, Thomas	age 51	farmer	Value 2500	Born VA.
Elizabeth	43	wife		b. No. Car.
Joel	24	farmer		b. Ohio
**Clayborn	20			"
Lewis	18			IND
Mary	16			"
Andrew	14			IND
James	13			IND
Margaret	8			IND

*According to Reveal Family History, Thomas Reveal was born in Highland Co., Ohio in 1796, and moved to Wappello Co. Iowa in 1832. This is not in agreement with the census which has him born in Virginia and has children born in Indiana as late as 1842. More likely that the census data is in error.

** Clayborn is the father of John Lilburn Reveal.

From the Reveal Family History, the following:

Reveal, Clayborn	dob 10 May 1831	Highland Co, Ohio
, Rebecca Jane (McGlothlen) wife		
	dob 10 July 1837	Fountain Co. IND
Thomas Jackson	dob 3 Aug 1856	Wappello Co. Iowa
Mary Rosetta	dob 4 Oct 1859	" "
Adam Albert	dob 18 Nov. 1861	" "
Elizabeth	dob 23 Jan 1866	" "
Prior S .	dob 22 Feb 1868	" "
***John Lilburn	25 May 1870	" "
Charles Wm.	dob 24 Sept. 1874	" "
Bertha May	dob 3 Aug. 1877	" "

*** Father of Jack Lilburn, James Paul, Dorothy/Donald Reveal

Reveal Family (Continues-)

State of IOWA (continues) Reveal surnames.

Reveal Family Marriages - Wappello Co. Iowa (tape 851-207 #4)

- (1) Reveal, Andrew J. to Martha Jane McLatt in Ottuma 17 Jan
1858
Reveal, Adam to Mary J. Dixon 25 Nov. 1865
- (2) Reveal, Mary to Cyrus Koons 22 Mar. 1877
- (3) Reveal, Thomas to Minerva Koons 23 March 1876
- (4) Reveal, Clabern (sic) to Rebecca Jane McGlaharn (sic)
18 Feb. 1855
Reveal, Nathaniel T. to Mary E. Warley (or Worley)
6 February 1873
- (5) Reveal, Bertha to Ernest S. Ross, 8 Sept. 1896
by J. R. Beard

(1). Son of Thomas Reveal

(2) Daughter of Clayborn Reveal

(3) Son of Clayborn

(4) Son of Thomas

(5) Daughter of Clayborn

Notes on the

Reveal Family History (continues)

THE McGLOTHLEN FAMILY

Rebecca Jane McGlothlen was the mother of John Lilburn Reveal; she is the daughter of Thomas and Sara (Meek) McGlothlen, and the grand daughter of William McGlothlen. (See Reveal Family History).

The McGlothlen name is spelled also McGlothlin and as McLaughlin, with McGlothlen being the most likely spelling.

1820 Census Index INDIANA McGlothles surnames.

McGlothlin, Thomas Warren Co. 146 Now TSp.
 Daniel Perr. Co. 150

1840 Census Laurence Co. Indiana (tape 007,727)

McGlothlen, Andrew

1830 Census Laurence Co. Indiana (tape 2595 part 1)

McGlothlen, Anthony page 96
 Andrew page 97

1850 Census Warren Co. Pigeon Tsp. Family 371, page 183/364

McGlothlin, Thomas	age 29	farmer	Value \$400	born	IND
Savina	25	wife			"
John D.	4				"
Sara M.	3				"
Elizabeth	8 mos.				"

McGlothlin, Daniel	age 70	farmer	value \$400	born	VA
Mary A.	67	wife			b. Carolina
Chester, Rebecca	18	(servant?)			b. IND

1850 Census IOWA Wappello Co page 489 Surnames.

McLaughlin, Thomas D.	age 34	Farmer	Value \$700	born	IND
**Martha	29	wife (illiterate)			b. KY
*** Rebecca	age 13	in school			b. IND
Mary	10	" "			b. IND
**** Jacob	5				b. Iowa
Milley	3				"
John Wm.	1				"

** In the Reveal Family History, the wife of Thomas D. McGlothlen is Sara Meek born 1817 in Laurence Co, IND.

*** Rebecca Jane--wife of Clayborn Reveal, mother of John L. Reveal, grandmother of Jack L. Reveal.

**** Jacob Lilburn McG.

Notes on the

Reveal Family History (continues-)

The McGlothlen Family (continues-)

1850 Census IOWA (continues-) Wappello Co. page 489

*McLaughlin, Charles age 76 Farmer Value \$1400 born VA
** Jane 62 wife (Illiterate) " VA

(in the same household):

*** Mendenhall, Margaret age 9 In school born IND
Saraanna 207 " " Iowa
Charles 5 " " "

* Father of Thomas D. He died the year of the Census.

** Jane was born in Jefferson Co., Tenn. according to the Reveal Family History.

*** The Mendenhalls are probably grandchildren. Another Mendenhall family follows the McLaughlin listing for Charles:

Mendenhall, Alford age 30 born Tenn.
Roseana 20
William 1 month born ILL.

Notes on the
Reveal Family History (continues -)

The McGlothlen Family (continues-)

McGlothlen family summaries from the Reveal Family History:

McGlothlen, Charles - ~~born~~ dob 13 April 1780
 Greenfric (sic) County VA
 Jane - wife dob Oct. 1780
 Jefferson Co. Tenn.
 Elizabeth dob 4 Feb 1804 Wayne Co. IND
 Rebecca J. 4 Jan 1806 " "
 Nancy M. 30 Jan 1808 " "
 John D. 18 Dec 1810 " "
 George H. 20 Oct 1812 " "
 Sarah M 14 Nov 1814 " "
 **Thomas D. 10 Dec 1816 " "
 Mary M 20 Apr 1820 Clay Co. MO.
 Jane M. 12 Feb 1822 Uego Co. IND
 Jonathan 13 Aug 1824 Fountain Co. IND
 Elenor 13 Oct 1828 " "

**Father of Rebecca Jane McGlothlen; grandfather of
 John L. Reveal; great grandfather of Jack L. Reveal

McGlothlen, Thomas - dob 10 Dec 1816 Wayne Co. IND
 **Sara Meek dob Oct 1817 Laurance Co. IND
 (Married 15 Sept. 1836)
 ***Rebecca J. dob 10 July 1837 Fountain Co. IND
 Mary J. 10 Mar. 1840 " "
 Nancy M 26 Mar. 1842 " "
 Charles W. 4 Jan 1844 " "
 Jacob Lilburn 11 Aug 1845 Wappello Co Iowa
 Milly Elenor 23 Jan 1847 " "
 John Wm. 2 Apr 1849 " "
 Sarah Eliz. 13 Aug 1851 " "
 Thoman Benton 15 Dec 1853 " "
 Andrew Jackson 23 Mar 1856 " "
 George Marion 17 May 1858 " "
 Benjamin F 23 Aug 1860 " "
 Adolphus D 6 Feb 1862 " "

**Wife listed as Martha, born KY, 1821, illiterate, in
 the US Census for 1850

***Mother of John Lilburn Reveal; grandmother of Jack L.
 Reveal; wife of Clayborn Reveal.

Notes on the

Reveal Family History (Continues -)

The McGlothlen Family (Continues -)

Marriages -- Wappello Co. IOWA (Tapes 851-208 & 851-207)

McGlothlin, Margret to Glen Patrick 5 June 1871
McGlothlen, Ellen to James F. Harris 12 Dec. 1872
McGlothlin, Thomas W. to Susan E, West 25 Dec. 1871
(1) McGlothlen, Sara E. to Joseph McComb 1 June 1876

(1) Daughter of Thos. McGlothlen

Notes on the

Reveal Family History (continues -)

THE LILBURN SURNAME

8 The surname Lilburn appears in the Reveal-McGlothlen families three times:

Jacob Lilburn McGlothlin (Iowa - 1845)
John Lilburn Reveal (Iowa - 1870)
Jack Lilburn Reveal (MO.- 1912)

The name evidently was linked to the McGlothlen family of Indiana and perhaps the Sara Meek family of Indiana. Census records turned up the following:

1830 Census Index - Eastern Tennessee

Lilburn, Andrew RO-28, Wn. 204 Husb./wife/3 chil.
Jesse? W-227 Husb./wife/3 children
Samuel SU-308 Husb./wife/ 3 children

1830 Census Index Pennsylvania

LILBURN

Lilburn, Henry All-248 Wilkins tsp
John Phil-013 Spring tsp

1850 Census Index New York

*** Lilburn, John? ULS-039, Warren tsp (see next item)

1850 Census for New York - Ulster Co. ?Warwarsing tsp.
page 39, family 570 (tape 444,324)

Lardner, Anthony	age 26	farmer	born Germany
" Catherine	26	wife	"
" John	9		"
*** Lilburn, John	15	laborer	"
Lardner, Pheobe	12		"
" Emila	50		"
" Lucretia	20		"

In the above listing, John Lilburn appears as a person living in the Lardner household. It is surprising that his place of birth is given as Germany along with the Lardner family, for Lilburn is an Irish/English name.

1870 Census for Iowa Ottumwa Co. 2nd Ward.

Lilburn, Samul?	age 45	Butter & egg shipper	b. Irland
Loobella	45	wife	"
Sara J.?	20		"
Anna	10	(cripples?)	KA
Crow, Mary	18	servant	Scotland

Letters

- 1 - John Reveal Sr to Jack + Arlene Reveal - 21 July 1947
- 2 - " " " " " " - 16 Oct 1947
- 3 - Paul Reveal to Jack Reveal 18 May 1953
- 4 - Darlene Reveal to Jack + Arlene Reveal - 15 January 1955
- 5 - Beulah Reveal to " " " 6 June 1961
- 6 - " " " " " 19 Jan 1966
- 7 - " " " " " 20 May 1969
- 8 - " " Funeral notice

Kansas City Mo

July 21st 1947

Mr & Mrs Jack Reveal

Dear Folks,

I asked your Mother to write you about your Trip Back Home This Fall but she left it to me

I understand you planned to come in Oct By T.W.A. because you could not get a new car. So I took it upon myself to find out what it would cost you to come by T.W.A. you would have to go to Sacramento By Train $2\frac{1}{2}$ tickets would cost \$33.34

Round trip
T.W.A $2\frac{1}{2}$ Round trip tickets to K.C. Mo \$532.25
Net total → \$565.59

I called the Southern Pacific Ry and find that you can get $2\frac{1}{2}$ Round trip tickets from Dunsmuir to K.C. Mo including Bed Room for \$293.23 or $2\frac{1}{2}$ Round trip tickets with drawing

Room for \$310.43
The Southern runs over the U.P. tracks from Sacramento Calif through Salt Lake - Ogdon - Denver - to K.C. Mo without change your meals in Dining Car would cost about \$40.00 for the Round trip it would take 3 days each way on the train and $1\frac{1}{2}$ days on T.W.A. But for that extra time you could save \$215.00 and get to see all the Country. The train is the best way to come. (1)

JLR Sr
to J & A. Reveal

I hope you get to come for I shure do want
to see all you folks you know I have never
seen the boys and I am afraid that I will
not live much longer. I have lived to see
you married and have Jim & Jon Allie
and Paul with a fine daughter & son
Dorothy with a verry good husband and
doing well all of which I am verry
Proud. So if I could just see you and
my Grand Sons I would not care
How soon the end came to me.

Please let me know when we can
Expect you to come

With Love to all

Your dad

Dear Jack and Arlean

KANSAS CITY MO

OCT 16TH 1947

We are very anxious to here when you expect to start to K.C. We are afraid you will not come if you do not get started soon please let me know about if not the exact time you can get away. Will you come on the train or on plane? We haven't had a letter from you for a long time so I told your mother last night that I would try and see if I could get a few lines out of you we want to see all of you folks very Bad. you know it has been 7 years since I have seen you and Arlean and never have seen the two Big Boys they must be wonderful Boys I will expect an answer by return mail.

Lil and allie drove to Seattle to Dorothy and Wes in Sept Stopped on way home in Caldwell to see Marg had a good time and no real trouble except one flat tire just before they got home. Mother and I are feeling O.K. now, hope you are all well

yours with love dad

We went for Christmas by train. It was our last visit. I made some fine photos of my dad + Mom which Arlean has.

JL - Sept 1979

John L. Revel
to
Jack + Arlean Revel



BUTLER MANUFACTURING COMPANY

FACTORIES • KANSAS CITY, MO • GALESBURG, ILL • RICHMOND, CALIF. • BIRMINGHAM, ALA. • MINNEAPOLIS, MINN.

CABLE: BUMANCO
TELEPHONE: BEnton 7400

7400 EAST 13th STREET
KANSAS CITY 26, MISSOURI

May 18, 1953

Dear Jack:

I hardly know how to start this letter since it has been so long since we have written or had a chance to talk with each other.

As you probably know, we had a siege of sickness with Aunt Lil & Uncle Allie all winter long. Both of them got quite childish and a little off their rocker. Lil went thru her gall bladder & ulcer operation in pretty good style, but it has been only the last 2 weeks that she is beginning to be like her old self again. They are now living with a practical nurse at Highland, Kansas. They both need care & companionship and we feel that they are receiving good care. There address is Highland Kansas % Mrs. Ora Lewis.

Before they left for Highland, they indicated that they would like to set up a trust in order that their estate would be managed safely if they continued to be muddled & confused. Also they wanted to make sure that whatever was left was distributed in the manner they wanted. At their request, I had a lawyer talk to them, but he felt that, at the time, they were too confused to set up such a trust. They are so much better now, it might be that now is a good time for such action. Jack, the situation is this: They still have quite a bit of cash and property left. As it is now,

Paul Reveal
to
Jack Reveal

(1)

18-V-53

when one dies the other receives all the estate. This is, of course, as it should be. However, if Lil dies first, then allie, all of the estate would be divided between his nieces & nephews.

Jack, that is not how they both feel it should be divided. Mother, you & I would, if Lil & Allie could arrange it, would receive a good portion of the estate. The nieces here in K.C. and the nephews in Los Angeles have done nothing to help them thru the last troublesome years. Only Elizabeth at White Cloud has been interested at all.

I personally feel that if you could come back here for 3 or 4 days, you & I could arrange to have a trust (administered by a bank) set up & it would make the folks very happy & give them a greater sense of security. Then too, the folks have indicated that they wanted to use the trust & an administrator to distribute any funds & property left after they both were dead. Since their estate is such that they now can live a long long time & not exhaust their assets (if it is properly administered) it would mean several thousand dollars to each of us to work this out now.

If you can arrange to come home for 3 or 4 days it would be very profitable to you, I am sure. Please let me hear from you at once about this & keep it confidential since even Mother does not know how they plan to divide their estate. I am the only one who was present when the matter was discussed with the lawyers.

And now about Dad. I do not know whether you are aware that he is really an old old man now. He has been in the hospital three



BUTLER MANUFACTURING COMPANY

FACTORIES • KANSAS CITY, MO. • GALESBURG, ILL. • RICHMOND, CALIF. • BIRMINGHAM, ALA. • MINNEAPOLIS, MINN.

CABLE: BUMANCO
TELEPHONE: BEnton 7400

7400 EAST 13th STREET
KANSAS CITY 26, MISSOURI

becoming an invalid. There is so many things wrong with him that the doctors feel that the best thing to do is keep him as comfortable as possible & expect the end in the not too far distant future.

We have had him in Research Hospital the past 3 weeks and he will be there for another week or two before we will have to take him out of the hospital & put him in a nursing home for care. Neither mother nor I can care for him in his condition. His care requires someone who can handle people in his condition. The kidneys are bad as well as the bladder, heart, lungs, stomach & head. Only in a nursing home, with equipment & registered nurses, can give him the care he requires. As soon as his Blue Cross coverage expires, which will be soon, we will have to move him to a nursing home. So far we have met the doctor bills, medicine, special nursing bills, etc, all OK, since Blue Cross paid for his room. Without Blue Cross, however, the hospital will be much too expensive for us to handle.

I am wondering if you would feel equal to start sending mother about 35.00 a month while Dad is putting us to such expense. She, mother, would like to continue working, at least for a while. She does not, however, make enough to bear all the expense herself.

She is so very independent she wants to do everything herself. If she had her way, she would spend everything she had & never expect any help at all. What money I have given her has practically been forced upon her. She is grateful for it tho and spends it well & wisely.

I have not planned to ask Dorothy for any financial help because, as perhaps you already know, Dorothy plans to have mother live with her after she retires from earning her own living. It may work out thus or mother may eventually decide to stay in N.C., but anyway I don't feel like asking Dorothy to help the folks along at this time.

Mother can always have a home with me when she feels that is what she would like to do. That decision, of course, is in the future, and need not be faced at this time.

Two things need to be decided now. First about the trust arrangement for Lil & Allie. Secondly about any financial assistance you can give to mother to help meet the nursing home expense. Such care would cost 150⁰⁰ or 160⁰⁰ a month for how long I do not know. Would 35⁰⁰ a month from you be satisfactory. Please be honest with me Jack, and if it is too much, say so, because I can always dig a little deeper to make up the difference.

I would like to hear from you immediately if possible, & I certainly hope you can arrange to come home for 3 or 4 days to get the trust set up. Your presence will certainly help speed such arrangements and now is the time to do it because they are both feeling well and in possession of all their facilities. Mother & my family are all well & as ever the same.

Paul

(4)

Paul E Virginia daughter
Darlene

Saturday afternoon
January 15, 1955

2220 Holmes Ave
K.C. Mo.

Dear Uncle Jack, Aunt Arlene, Jim and Jon,

We enjoy reading your letter so much about the boys, their sports and schools and your work.

It has been about a month now since the important day and it seems as though we have been that long getting settled down again. We hope you like the pictures. My father-in-law took some colored movies which came out very well.

We had such a wonderful time the week after we were married. We went to the lake of the Ozarks staying in the summer home of one of dad and mother's friends. The weather was beautiful, you would never have known it was mid December for Missouri. All we needed out doors was a sweater. We got to take long walks around the lake and several times we took the boat out and got acquainted with the place. We decorated our tree with popcorn and cranberries and left it outside when we left for the birds. On the porch there was bird seed of all kinds -

Darlene Reveal
to
Jack & Arlene Reveal

5-11-55

①

You should have seen the ones it attracted, especially the red birds.

I really got to practice cooking while we were there, I've got a long way to go yet but I'm working hard at it.

Bob is back at school now busy taking semester finals. I'm living at the nurses home until spring and then when Bob comes in June we will be able to have our home together. In the fall we will go back to Lincoln while he finishes his 5th year at Nebraska. As you can see now our life is full ~~now~~ of trying to get educated.

Mother and dad are fine and Mike, needless to say, is very full of life.

Everything is fine - write when you have time, I enjoy hearing about your life and family.

Love

Darlene and Bob.

Hallmark

Received
7/6/61

About Aunt Belle's
death

Dear Jack & Arlene
Wed - + hot back
here - 90 + 95° - at
has been very
nice (so they say)
until - just - few
days - wonder if
Carolyn can stand
the heat - Fri 6/30/61
Will Jack - Auntie
Belle passed away
last Thursday night
or early Fri morn -
I was with her all
day Thurs + Wed
afternoon - Come
finding out she
was dying

night - @ - wife to
that case and the
from morn -
Sat -
leave for Carolyn
at about 3 am in P.M.
+ Sat (Morn) + leave
went to R.I. @ Sat
Sat - 11:00 -
face get from
every one knew -
3/1/61

when - see -
+ me -
also -
also -
at home -
in me -
to talk to -
we had short
in funeral home
then - just a few
words at grave -
early -
his wife & the mother
from hospital +
myself with the

(1)

Bulah Reusel
to
Jack & Arlene

6 June
1961

7/6/61

here tomorrow (at 1:30 -
Had a big 4 inches of rain
last night - awful storm -
today nice & cool -

I'll write when I get
back to slats - Paul
is out on eastern
trip - next week he expects
to be in R. C. & C + D
will go out there over
week end - then if it
doesn't cost too much we
C + D - will go back to Calif
by way of Grand Canyon -

We'll keep in touch -

"C" is Caroline Otto,
Dot's daughter.

Love
MOM

Paul + I got flowers - put all
our names on it -

B. Reveall, 109 E 40th Kansas City Mo 64111 19 Jan 1966

Dear Jack & Arlene -

Wied the 19 of Jan -
I never thought I'd
wait so long waiting
after Xmas - after receiving
the lovely box of candy -
The box its self is lovely
& I'm going to keep it -
The candy? Well it
was de-lish - but you
see I cant eat candy -
but I did though several
pieces - then gave Paul
some & meat had on table
for all friends to take
a piece - (damn) - Grr

Beverly Reveall
to
Jack & Arlene Reveall

19 Jan 1966

(1)

on a strict diet - 110
 sugar no starches -
 because of my heart
 have to get my waite
 down - Weigh 180 lbs.
 must get down 165 -
 slow work - Got lots of
 lovely (small) gifts
 from every one - & my
 birth day - lots of cards
 & handkerchiefs - Susie had
 from her - She also
 called me too on that
 day - after 9 oc you
 can't call for 1⁰⁰ for 3
 min. - so it isn't bad -
 Call me some

me & reverse the
charge - I'm always
up til after 11 oc - so
I'll be up -

Lo (Logan) 1-4125

I'd call you - but
I never know when
you'll be there -

Paul was over last
night - had dinner
with me at 6 oc then
at 7 he went on over
to Rochester College
to start a course in
some subject pertaining
to his work

4

So he will eat very
I'll see dinner
with me - which makes
me very happy -
would like to have
a vacation sometime
soon - go see Nat & C
& maybe bring C back
with me - stop off &
see Marjorie -

Kate Schart - remember
her at La Messa wants
me to come there before
college is out - but I
can't do that -

I hope you can use

5

the Xmas I sent -
Karen said kids
enjoyed letters -
I'm glad -

I've had flu - OK
now - busy with
my job - Job good -
Going to have lots of
vacant apts - Have
4 now - 4 another up

Feb 1 -

Lots of love to my
family - Love

Mom -

(5)

20 May 1969

Dear Jack & Arlene -

Thanks for the lovely
mothers day card & the
check. I haven't spent the
money yet. Haven't been
down town - too busy here
at apt. - went to Pauls
mothers day. He came over
after me - but I came
home in cab. But called
me in evening about 11:00 -
just had gone to bed -
she had been in hospital
had a lump removed
from breast, never told
any of us - guess she didn't
want to worry us - I
couldn't understand why
I couldn't get either Walter or
Carolyn - I tried several
times - so of course I worried
that mothers day card Jack,
Arlene, was the best I'd ever
seen - every one

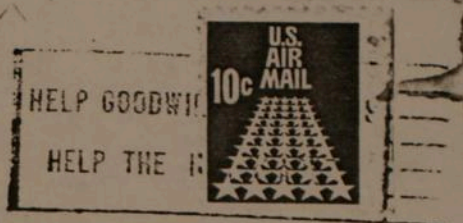
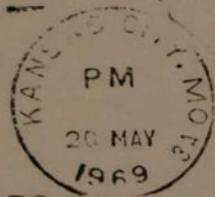
Beulah Rose Reveal
to
Jack & Arlene Reveal

20 May 1969

had to read all of it -
Did you get the birth
day clock - I do - got one
for Paul on his birth day -
I have a gift & card
for Aulene - hope to
get em sent out today
Raining today - Tuesday

Write - enjoyed
your letter - told
her I'd send it on to
her - but haven't yet
Ah I'm at the limit -
I'll stop & get this out
Lots of love Mom -
mother's day card &
Picture of Jim's family -

109 E 4th
Kansas City
Mo.



Mr Jaise Reveol
4140 Bonifacio Drive
No 224
San Diego
92115 Calif.

I am the Resurrection, and the Life, saith the Lord; he that believeth in me, though he were dead, yet shall he live, and whosoever liveth and believeth in me shall never die.

Not only do we believe in God, and a future life of peace, happiness and beauty surpassing human conception, but we also feel that in remembering these worthy ones we are able to attain new heights and to challenge posterity to even greater accomplishments.

Let us remember, therefore, that while we gather to pay our parting tribute and to bring solace and comfort to the sorrowing, we have also come to consecrate ourselves anew to the great unfinished task of creating a better world.

Here in the sanctity of love and memory let us seek to sustain the relatives and close friends by the evidencing of faith and hope; to draw a little closer in friendship and understanding; to inspire the bereaved with greater courage for the days ahead; and to paint a memory picture that shall ever remain a source of comfort and strength.

MEMORIAL SERVICES
For

MRS. BEULAH DEAN REVEAL

Departed
OCTOBER 12, 1969

Services held at
D. W. NEWCOMER'S SONS
CHAPEL

Date
OCTOBER 15, 1969
3:00 P. M.

Officiant
THE REVEREND PETER M. STURTEVANT
Saint Paul's Episcopal Church

Music
Soloist: HAROLD REYNOLDS
Organist: GRAHAM COOK

Interment
FLORAL HILLS CEMETERY

Beulah Reese

Funeral Notice 15 OCT
1969