



Hunt Institute for Botanical Documentation
5th Floor, Hunt Library
Carnegie Mellon University
4909 Frew Street
Pittsburgh, PA 15213-3890
Telephone: 412-268-2434
Email: huntinst@andrew.cmu.edu
Web site: www.huntbotanical.org

The Hunt Institute is committed to making its collections accessible for research. We are pleased to offer this digitized item.

Usage guidelines

We have provided this low-resolution, digitized version for research purposes. To inquire about publishing any images from this item, please contact the Institute.

Statement on harmful and offensive content

The Hunt Institute Archives contains hundreds of thousands of pages of historical content, writing and images, created by thousands of individuals connected to the botanical sciences. Due to the wide range of time and social context in which these materials were created, some of the collections contain material that reflect outdated, biased, offensive and possibly violent views, opinions and actions. The Hunt Institute for Botanical Documentation does not endorse the views expressed in these materials, which are inconsistent with our dedication to creating an inclusive, accessible and anti-discriminatory research environment. Archival records are historical documents, and the Hunt Institute keeps such records unaltered to maintain their integrity and to foster accountability for the actions and views of the collections' creators.

Many of the historical collections in the Hunt Institute Archives contain personal correspondence, notes, recollections and opinions, which may contain language, ideas or stereotypes that are offensive or harmful to others. These collections are maintained as records of the individuals involved and do not reflect the views or values of the Hunt Institute for Botanical Documentation or those of Carnegie Mellon University.

About the Institute

The Hunt Institute for Botanical Documentation, a research division of Carnegie Mellon University, specializes in the history of botany and all aspects of plant science and serves the international scientific community through research and documentation. To this end, the Institute acquires and maintains authoritative collections of books, plant images, manuscripts, portraits and data files, and provides publications and other modes of information service. The Institute meets the reference needs of botanists, biologists, historians, conservationists, librarians, bibliographers and the public at large, especially those concerned with any aspect of the North American flora.

Hunt Institute was dedicated in 1961 as the Rachel McMasters Miller Hunt Botanical Library, an international center for bibliographical research and service in the interests of botany and horticulture, as well as a center for the study of all aspects of the history of the plant sciences. By 1971 the Library's activities had so diversified that the name was changed to Hunt Institute for Botanical Documentation. Growth in collections and research projects led to the establishment of four programmatic departments: Archives, Art, Bibliography and the Library.

Old maps & area guides

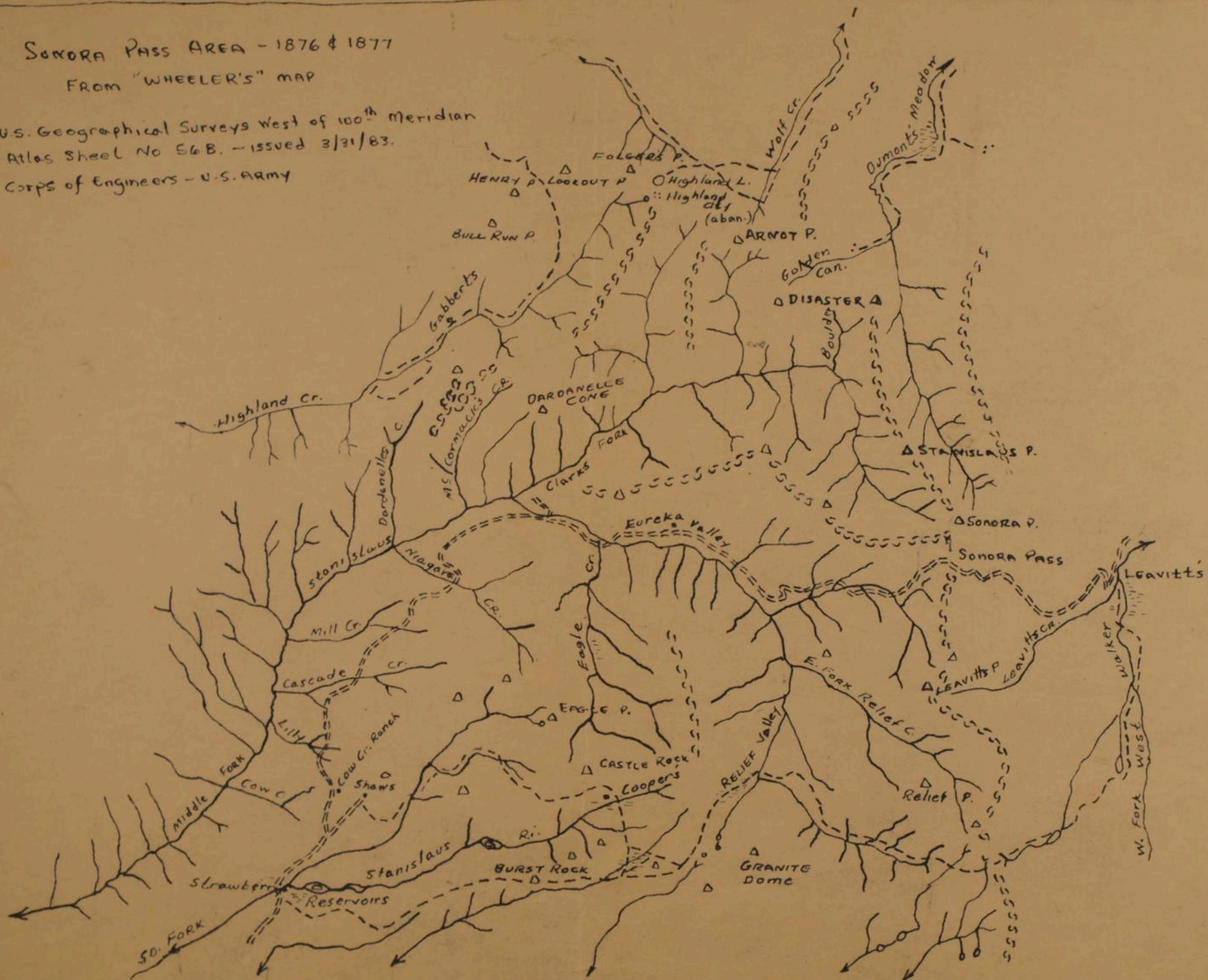
1. Payette Nat Forest - 1934
2. Summit District
& Pinecrest S.H. Luchs
3. Copies of ^{Sonora} ~~Juogo~~ Pass
Area historical maps
(Holt; Wheeler, etc.)
4. Juogo Road History
5. Sonora Pass guide book
1968 "Sonora Trail"
6. "Calif. Nat Forests"
ca 1966 -

FF13

SONORA PASS AREA - 1876 & 1877

FROM "WHEELER'S" MAP

U.S. Geographical Surveys West of 100th Meridian
Atlas Sheet No 56B. - issued 3/31/83.
Corps of Engineers - U.S. Army



Scale - 1 to 253,440

USFS - STANISLAUS R.F.

JR- 4/16/55

555
QET4, Berkeley,
A.S. U.C. Lib.
Atlas.

U.S. GEOGRAPHICAL SURVEYS WEST OF THE 100TH MERIDIAN.

PARTS OF EASTERN CALIFORNIA AND WESTERN NEVADA. ATLAS SHEET NO. 56B.

Traverse 29

Traverse 29



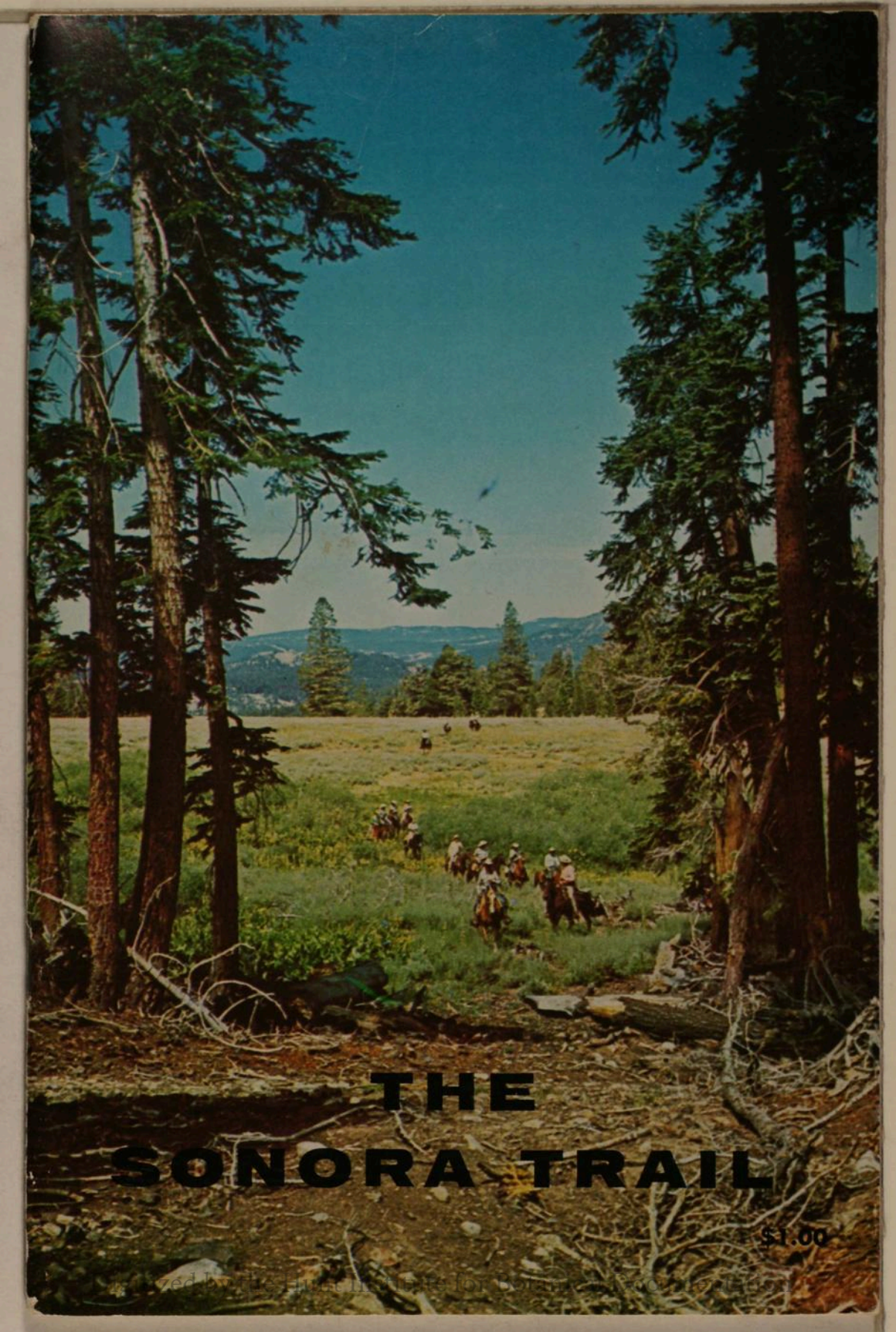
*County Boundary lines
added by 1873 maps
to aid in understanding
knowledge of 1873 and
in 1875 and 1875
map of 1873
Traverse 29*

EXPEDITIONS OF 1876 & 1877 Under the Command of
2nd Lieut. M.M. Macomb, Executive Officer
19th Artillery U.S. Army Field Astronomer

Scale, 1 inch to 4 miles, or 1:253,440.

1st. Lieut. Geo. M. WHEELER, Corps of Engineers, U.S. Army

F. Carpenter, Topographical Assistant
W.A. Cowles

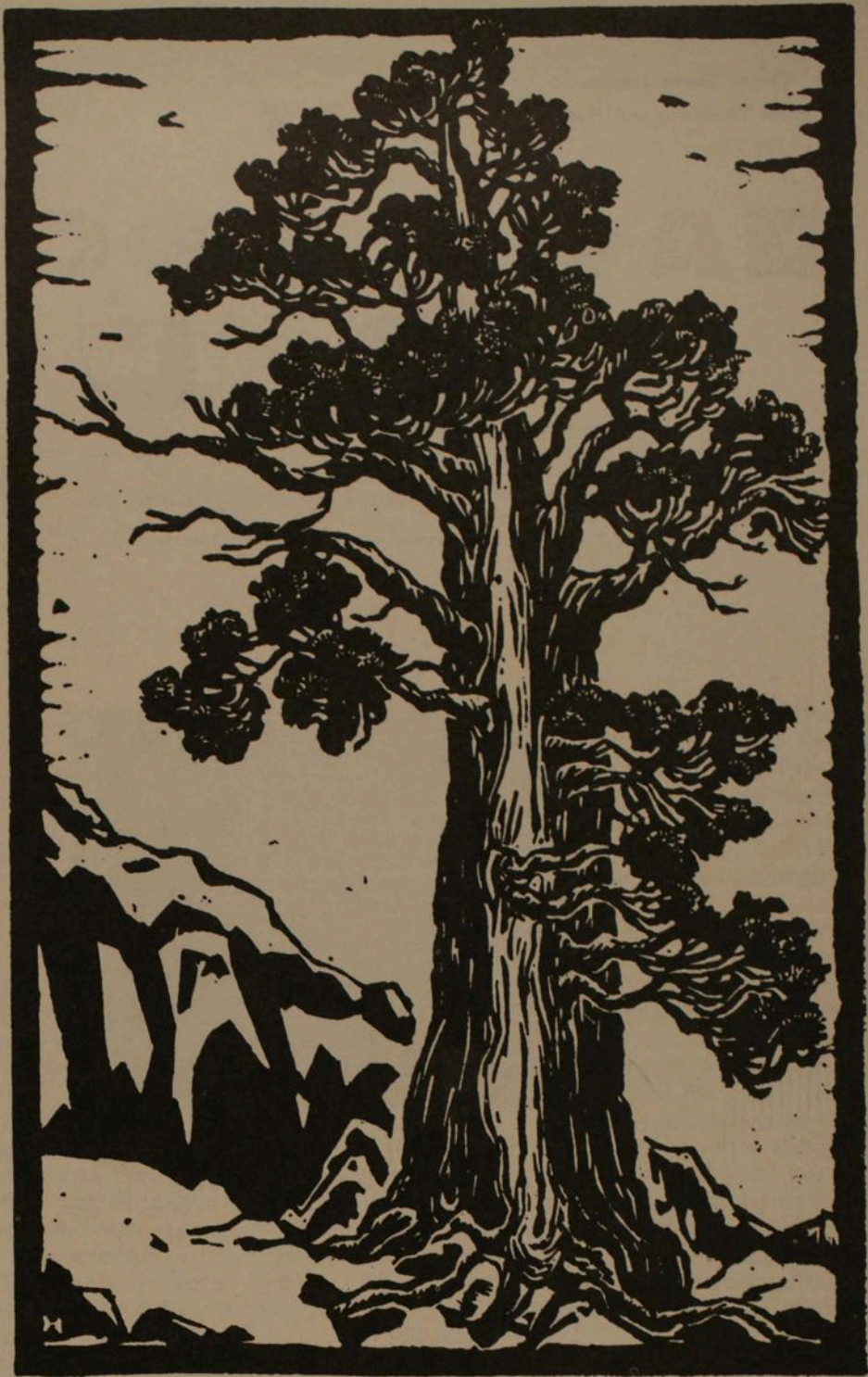


THE SONORA TRAIL

\$1.00

Printed by the Hingham, Mass. office of the publisher.

Y
O
S
E
M
I
T
E



TIOGA ROAD

1883 - 1961

NUMBER 3

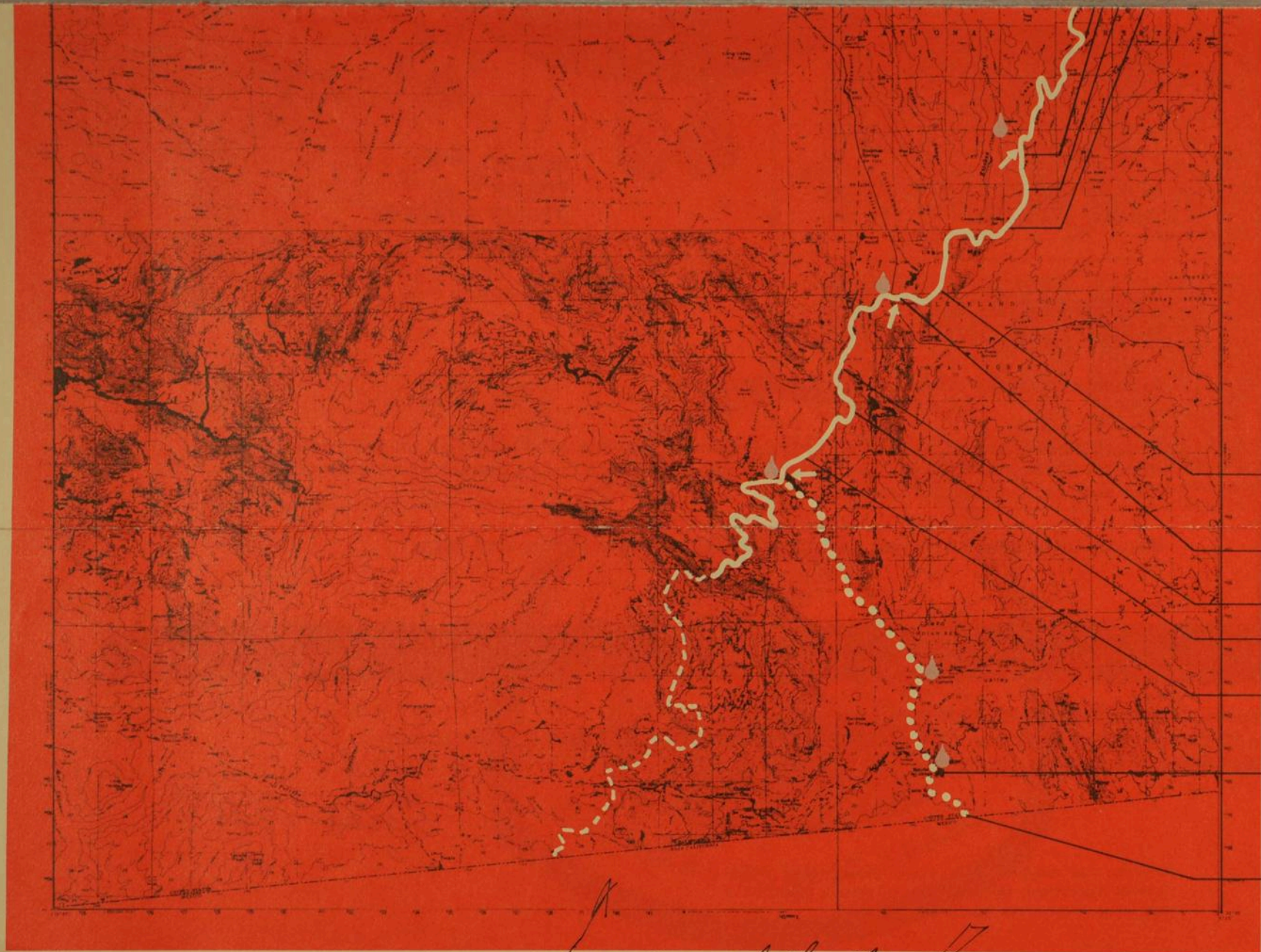
1961

The National Forests in CALIFORNIA



Forest Service

U. S. Department of Agriculture



Digitized by the Hunt Institute *An Unreadable Map!* Documentation



JACK REVEAL ↗



13



— View south toward Morena Lake. After tragic Laguna Fire in 1970, this area was set aside as Laguna-Morena Demonstration Area, to show the most advanced techniques to manage chaparral and reduce fire risks. Goats, prescribed fire, bulldozers, etc. are used to break up brush fields. (Photo 12).

— Two Indian campsites were excavated (along the stream below you) before I-8 was opened in 1975. Cahuilla Indians left desert heat to summer here and hunt, fish and gather acorns.

— Cottonwood Valley. (Photo 14).

— Much of this area burned in the 1970 Laguna Fire, second largest in California's history. 175,000 acres and 382 homes were consumed, most of this in the first 30 hours of the fire.

— Lake Morena was built in 1920's for City of San Diego water supply. County Park available for camping. No Swimming. (Photo 13).

— Rancho del Campo was a cavalry camp until some time after WWI. During WWII it was used to house Japanese, and today is a boy's correctional camp.

— Temporary route starts at the old custom house (an old shack south of the fence marking the Border). In the 1920's this was a border check point for cattle drives entering from Mexico.



BUS SERVICE:

Bus service to Campo is available from El Cajon and La Mesa. For details, dial Operator, ask for ZEnith 7-5875.

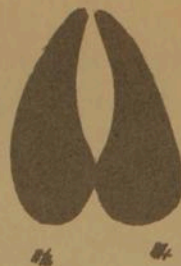
Bus available to Boulder Oaks from San Diego.



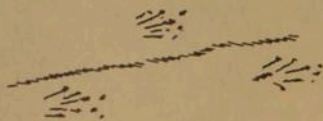
ROADRUNNER



BOBCAT



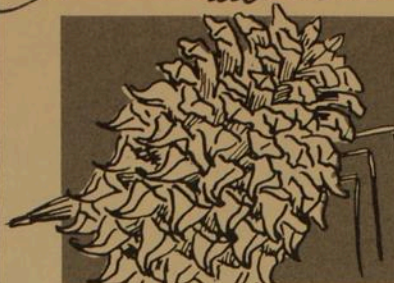
MULE DEER



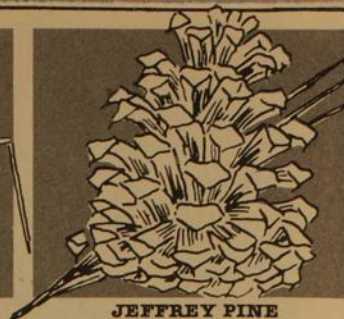
LIZARD



COYOTE



COULTER PINE
(*Pinus coulteri*)



JEFFREY PINE
(*Pinus jeffreyi*)



PINYON PINE
(*Pinus quadrifolia*)



INCENSE CEDAR
(*Calocedrus decurrens*)



Answers to "No-trace traveler" quiz:

- | | |
|-------|-------|
| 1 - b | 5 - b |
| 2 - a | 6 - b |
| 3 - a | 7 - a |
| 4 - b | 8 - b |

Hunt up some helpful
"PCT-VOL. I," by T. W.
"BASIC MOUNTAINE"

Hydrophobic
soil chemicals
accumulate

GRASS
FORBS
STUMP SPROUTS
SEEDLINGS

! Some
Shrubs resprout
from stump burls

OBSERVE FIRE REGULATIONS!

Remember, camp fires are **NOT PERMITTED**

Either plan for cold meals, or bring a small portable stove (liquid or gas fueled) which (during low fire danger) may be used if placed in the center of a circle of 10 feet radius, cleared to bare soil.

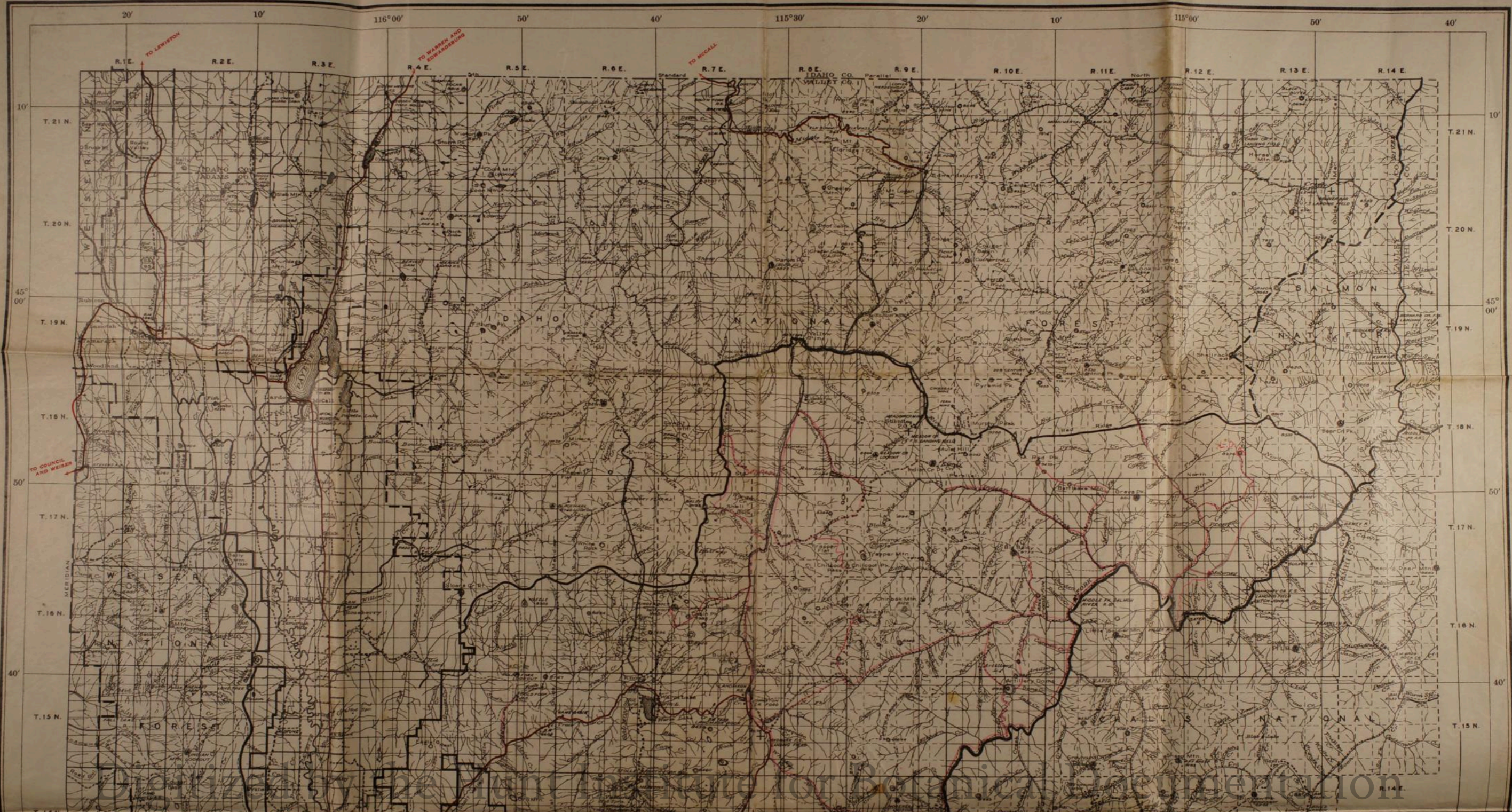
Smoke only when stopped (not traveling) and away from dry fuel.

references such as: "GOING LIGHT," publ. by Sierra Club.
Innnett, Wilderness Press, Berkeley, Calif. "PCT-HIKE PLANNING GUIDE," C. Long, editor.
"CAMPING," San Diego Chapter, Sierra Club.

Corca 1976

Programs and activities of the Forest Service, U.S. Department of Agriculture, are available to all persons regardless of race, color, religion, sex, age, or national origin.

PAYETTE · NATIONAL · FOREST
- IDAHO -
1934



20' 10' 116°00' 50' 40' 115°30' 20' 10' 115°00' 50' 40'

R. 1 E. TO LEWISTON R. 2 E. R. 3 E. R. 4 E. TO WARREN AND HOWARDBURG R. 5 E. R. 6 E. TO MICALA R. 7 E. R. 8 E. IDAHO CO. VALLEY CO. R. 9 E. R. 10 E. R. 11 E. North R. 12 E. R. 13 E. R. 14 E.

T. 21 N. T. 20 N. T. 19 N. T. 18 N. T. 17 N. T. 16 N. T. 15 N.

IDAHO NATIONAL FOREST SALMON NATIONAL FOREST

TO COUNCIL AND WEISER

W. E. I. D. A. H. O. N. A. T. I. O. N. A. L. F. O. R. E. S. T.

W. E. I. S. E. R. N. A. T. I. O. N. A. L. F. O. R. E. S. T.

IDAHO CO. VALLEY CO.

Standard

Meridian

North

5th

10'

45° 00'

50'

40'

Handwritten notes and scribbles on the right margin of the map.



U. S. DEPARTMENT OF AGRICULTURE
 FOREST SERVICE
 F. A. SULLOX, FORESTER
 T. W. FORCROSS, CHIEF ENGINEER

PAYETTE NATIONAL FOREST

IDAHO

BOISE MERIDIAN

1934

Jack Roszel
 6-12-34



Scale
 1 2 3 4 5 Miles

- LEGEND
- National Forest Boundary
 - Administrative Forest Boundary
 - Adjacent National Forest Boundary
 - Main motor highway
 - Good motor road
 - Poor motor road
 - Trail
 - Railroad
 - Telephone lines
 - Ranger station
 - Permanent lookout station
 - Triangulation station
 - House, cabin, or other building
 - Forest Service landing field
 - Municipal landing field
 - Supervisor's headquarters, Cascade, Idaho

Compiled at Regional Office, Ogden, 1934,
 from U. S. G. S. G. L. D. Forest Service,
 and other surveys by T. R. Littlefield
 Traced by G. L. Niergle, 1927-28
 Revised by M. W. Blair, 1934

