



Hunt Institute for Botanical Documentation
5th Floor, Hunt Library
Carnegie Mellon University
4909 Frew Street
Pittsburgh, PA 15213-3890
Telephone: 412-268-2434
Email: huntinst@andrew.cmu.edu
Web site: www.huntbotanical.org

The Hunt Institute is committed to making its collections accessible for research. We are pleased to offer this digitized item.

Usage guidelines

We have provided this low-resolution, digitized version for research purposes. To inquire about publishing any images from this item, please contact the Institute.

Statement on harmful and offensive content

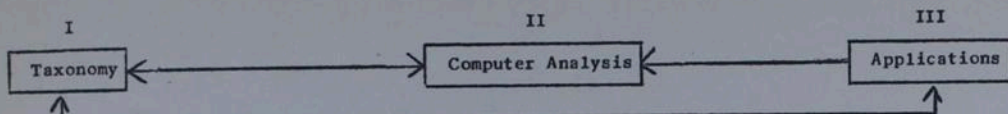
The Hunt Institute Archives contains hundreds of thousands of pages of historical content, writing and images, created by thousands of individuals connected to the botanical sciences. Due to the wide range of time and social context in which these materials were created, some of the collections contain material that reflect outdated, biased, offensive and possibly violent views, opinions and actions. The Hunt Institute for Botanical Documentation does not endorse the views expressed in these materials, which are inconsistent with our dedication to creating an inclusive, accessible and anti-discriminatory research environment. Archival records are historical documents, and the Hunt Institute keeps such records unaltered to maintain their integrity and to foster accountability for the actions and views of the collections' creators.

Many of the historical collections in the Hunt Institute Archives contain personal correspondence, notes, recollections and opinions, which may contain language, ideas or stereotypes that are offensive or harmful to others. These collections are maintained as records of the individuals involved and do not reflect the views or values of the Hunt Institute for Botanical Documentation or those of Carnegie Mellon University.

About the Institute

The Hunt Institute for Botanical Documentation, a research division of Carnegie Mellon University, specializes in the history of botany and all aspects of plant science and serves the international scientific community through research and documentation. To this end, the Institute acquires and maintains authoritative collections of books, plant images, manuscripts, portraits and data files, and provides publications and other modes of information service. The Institute meets the reference needs of botanists, biologists, historians, conservationists, librarians, bibliographers and the public at large, especially those concerned with any aspect of the North American flora.

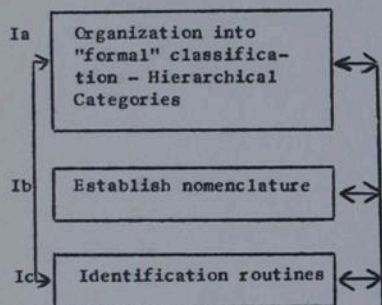
Hunt Institute was dedicated in 1961 as the Rachel McMasters Miller Hunt Botanical Library, an international center for bibliographical research and service in the interests of botany and horticulture, as well as a center for the study of all aspects of the history of the plant sciences. By 1971 the Library's activities had so diversified that the name was changed to Hunt Institute for Botanical Documentation. Growth in collections and research projects led to the establishment of four programmatic departments: Archives, Art, Bibliography and the Library.



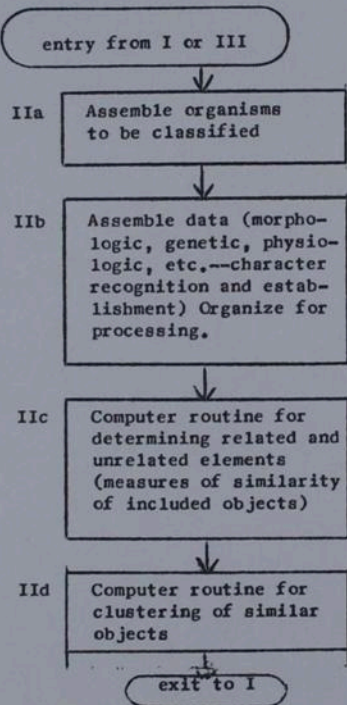
Note: The procedure begins and ends in either one of the taxonomic areas or in one of the applications.

DETAILED FLOWCHARTS

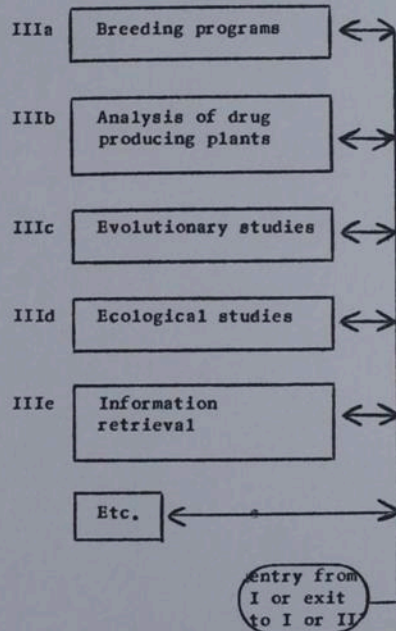
I - Taxonomy



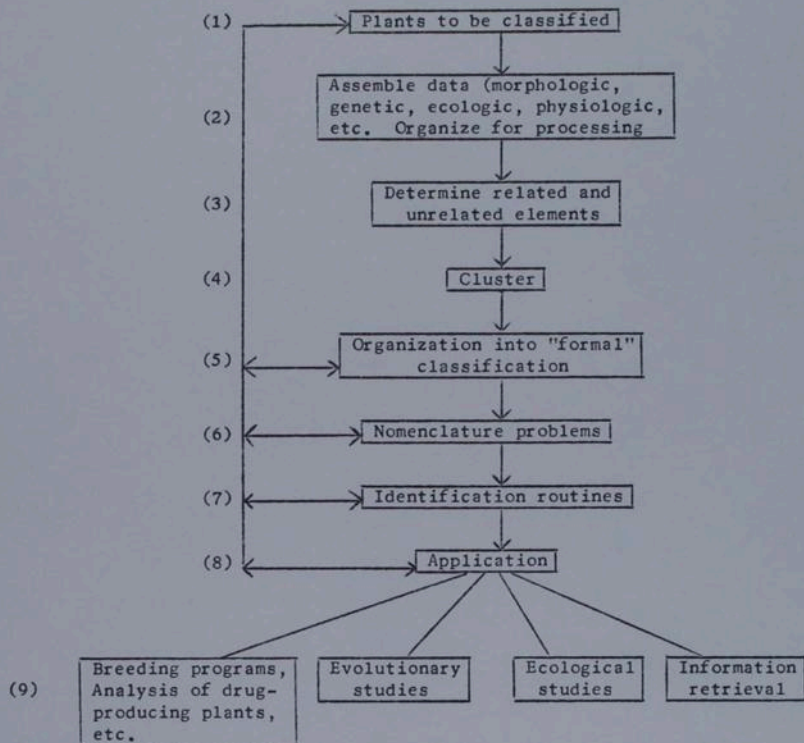
II - Computer Analysis



III - Applications



PROCESSING TAXONOMIC PROBLEMS



David J. Rogers
Professor of Botany
December 2, 1965

Figure 1. A Summary of Species Delimitation Processes

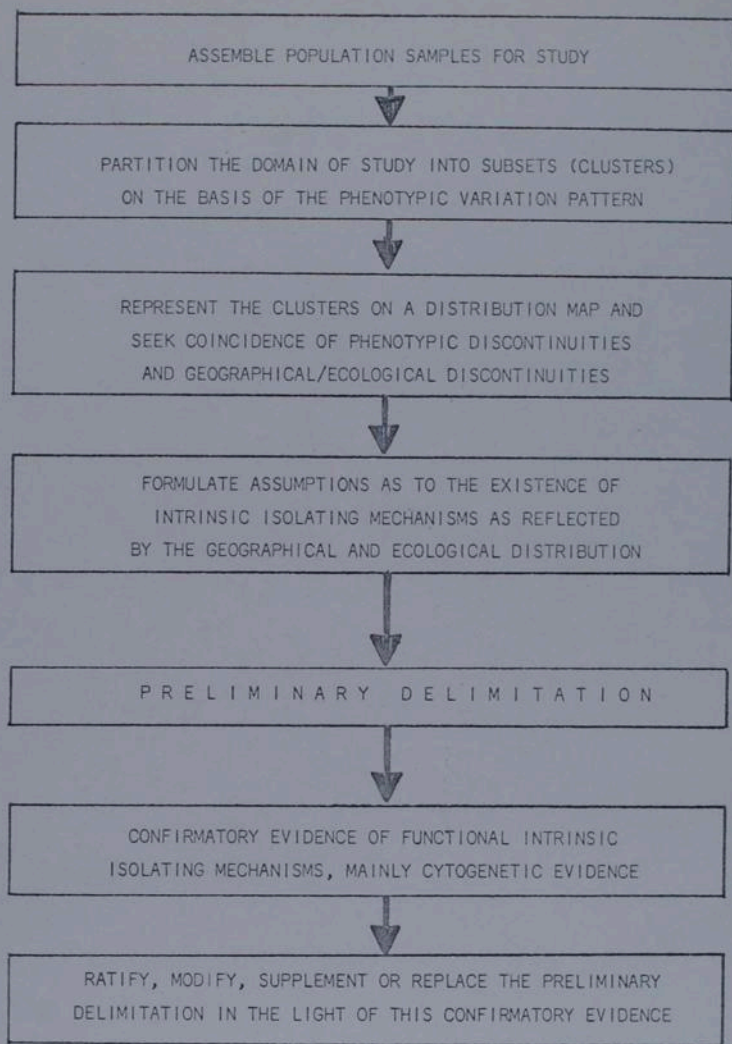


Figure 2. A Typical Procedure to Begin the Study

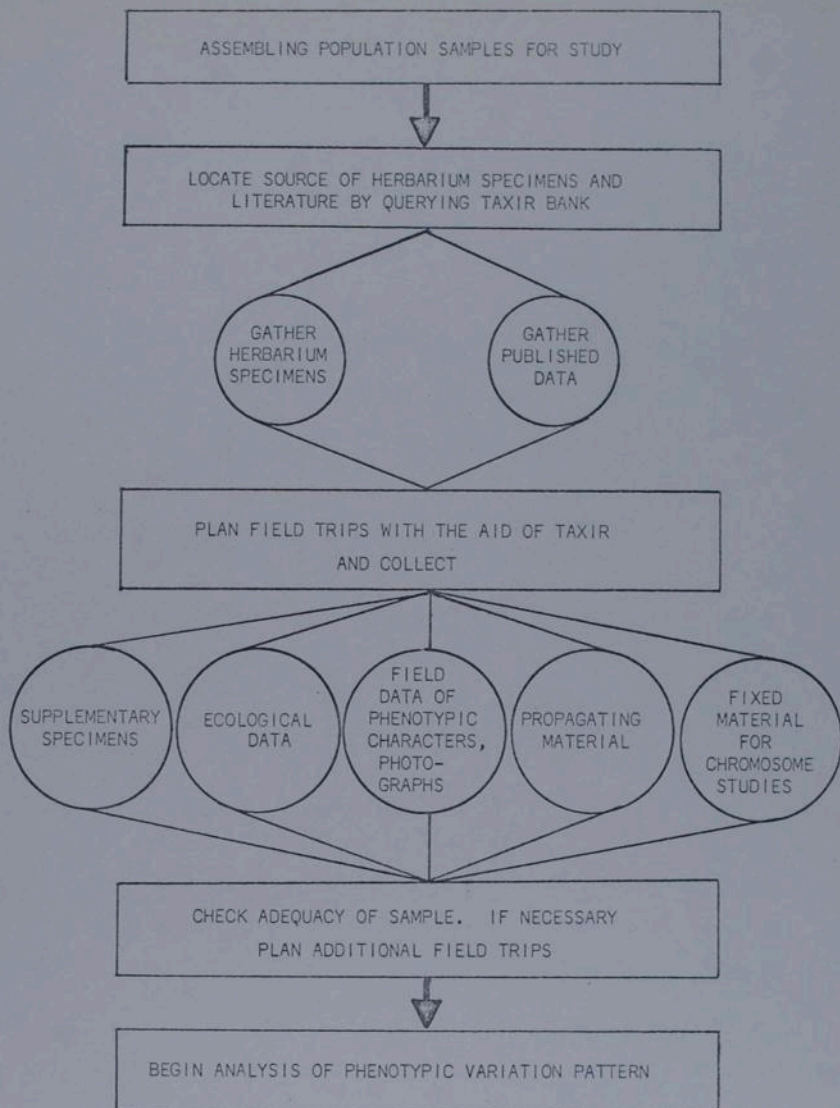


Figure 3. Study of Phenotypic Variation Pattern

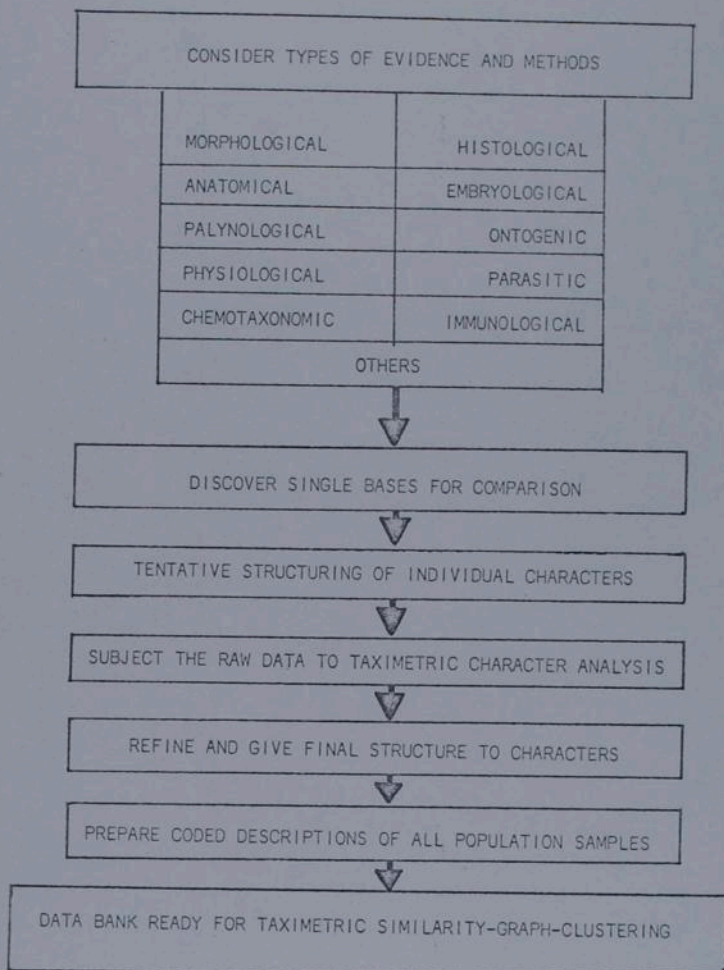


Figure 4. A Suggested Procedure for Gross Morphological Pattern Analysis

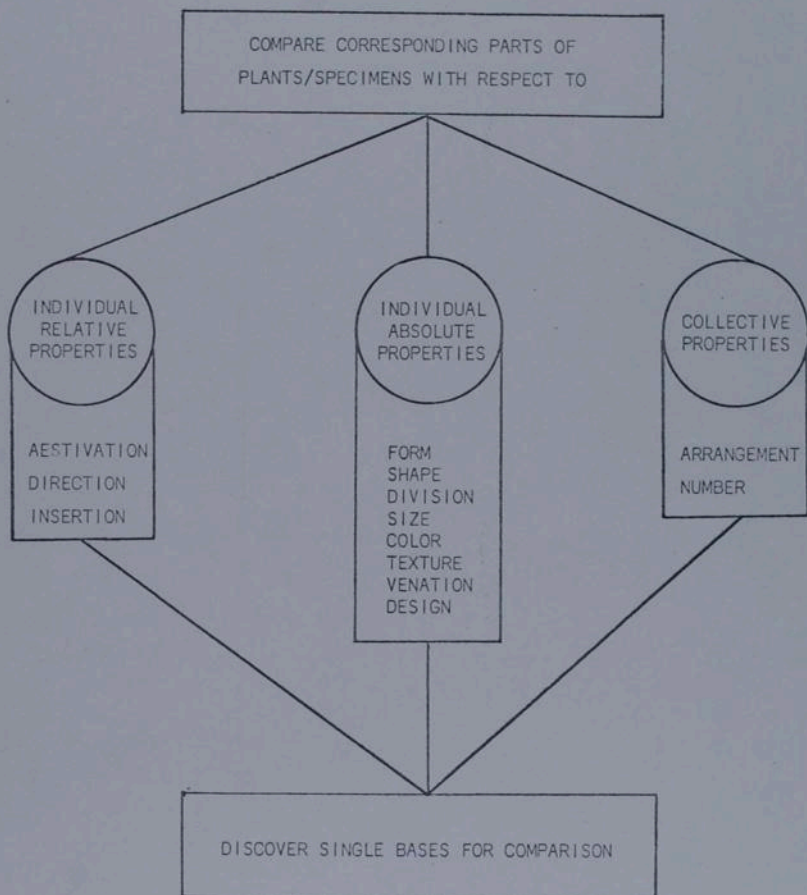


Figure 5. Employing Intrinsic and Extrinsic Data to Discover Taxa

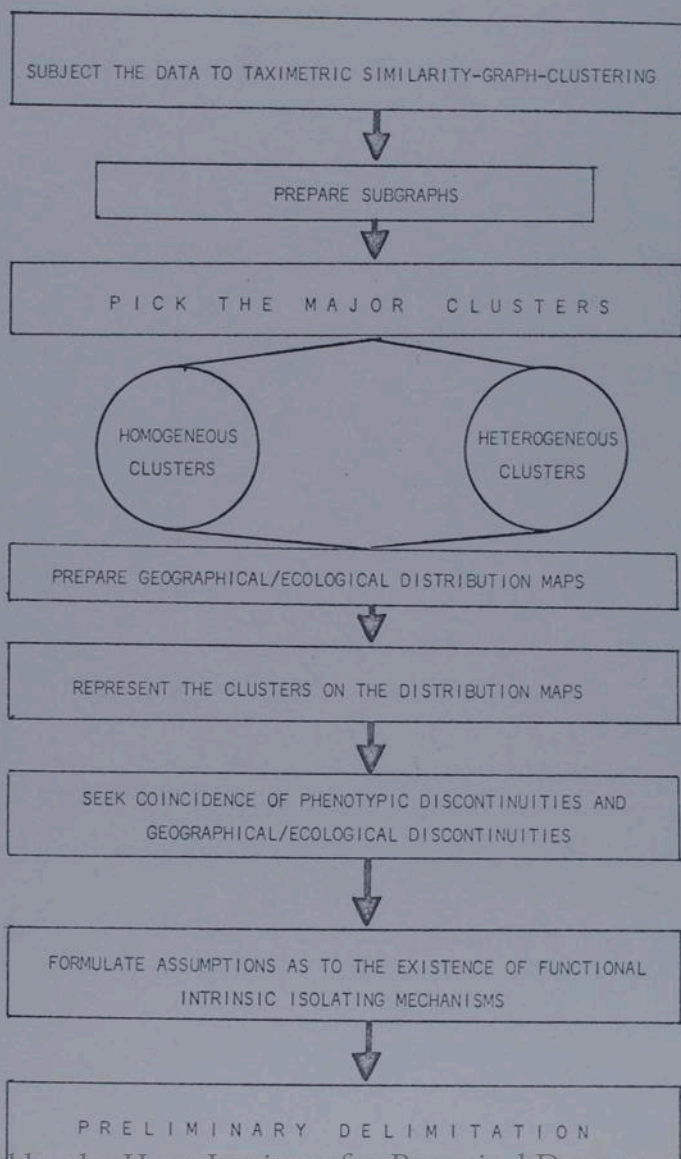


Figure 6. Homogeneous Clusters and Taxon Designations

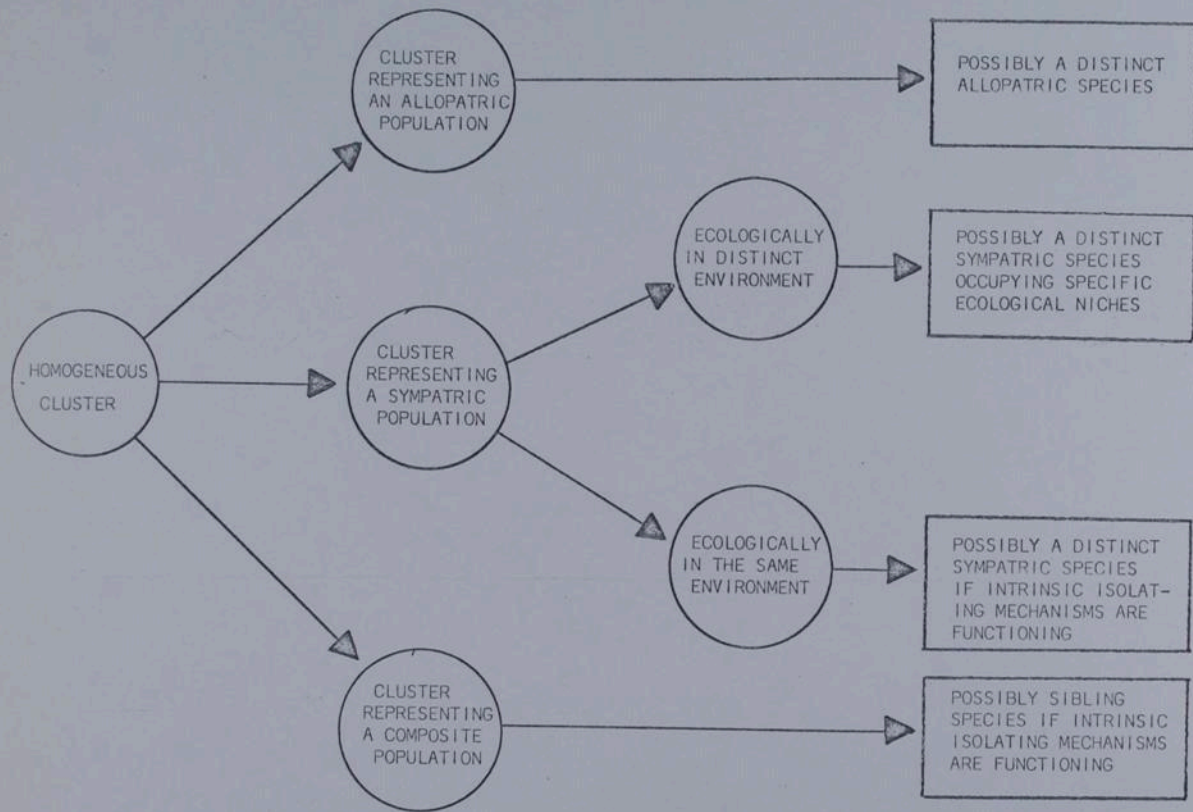


Figure 7. Heterogeneous Clusters and Taxon Designations

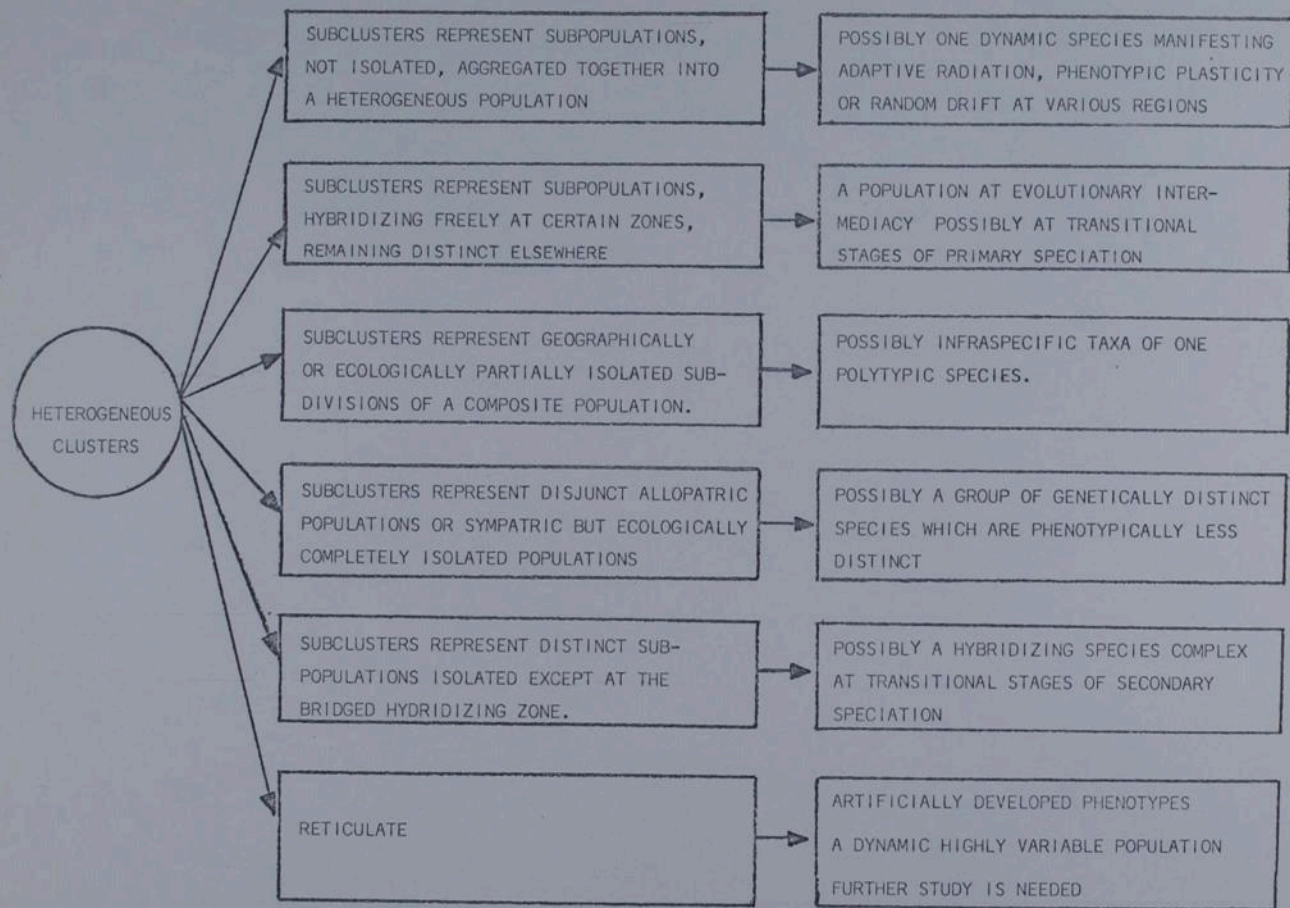


Figure 8. Integrating Confirmatory Evidence of Intrinsic Isolating Mechanisms

