



Hunt Institute for Botanical Documentation
5th Floor, Hunt Library
Carnegie Mellon University
4909 Frew Street
Pittsburgh, PA 15213-3890
Contact: Archives
Telephone: 412-268-2434
Email: huntinst@andrew.cmu.edu
Web site: www.huntbotanical.org

The Hunt Institute is committed to making its collections accessible for research. We are pleased to offer this digitized version of an item from our Archives.

Usage guidelines

We have provided this low-resolution, digitized version for research purposes. To inquire about publishing any images from this item, please contact the Institute.

About the Institute

The Hunt Institute for Botanical Documentation, a research division of Carnegie Mellon University, specializes in the history of botany and all aspects of plant science and serves the international scientific community through research and documentation. To this end, the Institute acquires and maintains authoritative collections of books, plant images, manuscripts, portraits and data files, and provides publications and other modes of information service. The Institute meets the reference needs of botanists, biologists, historians, conservationists, librarians, bibliographers and the public at large, especially those concerned with any aspect of the North American flora.

Hunt Institute was dedicated in 1961 as the Rachel McMasters Miller Hunt Botanical Library, an international center for bibliographical research and service in the interests of botany and horticulture, as well as a center for the study of all aspects of the history of the plant sciences. By 1971 the Library's activities had so diversified that the name was changed to Hunt Institute for Botanical Documentation. Growth in collections and research projects led to the establishment of four programmatic departments: Archives, Art, Bibliography and the Library.



Hunt Institute for Botanical Documentation



Hunt Institute for Botanical Documentation



Hunt Institute for Botanical Documentation



Hunt Institute for Botanical Documentation



Hunt Institute for Botanical Documentation



Hunt Institute for Botanical Documentation



Hunt Institute for Botanical Documentation



Hunt Institute for Botanical Documentation



Hunt Institute for Botanical Documentation



Hunt Institute for Botanical Documentation



Hunt Institute for Botanical Documentation



Hunt Institute for Botanical Documentation

CM **INTERPOLATION OF SPINOSA MARGARITAE PLANT**

NOTE: THE SPINOSA MARGARITAE PLANT IS A SPINOSA MARGARITAE PLANT.

CM **INTERPOLATION OF SPINOSA MARGARITAE PLANT**

NOTE: THE SPINOSA MARGARITAE PLANT IS A SPINOSA MARGARITAE PLANT.

CM **INTERPOLATION OF SPINOSA MARGARITAE PLANT**

NOTE: THE SPINOSA MARGARITAE PLANT IS A SPINOSA MARGARITAE PLANT.

CM **INTERPOLATION OF SPINOSA MARGARITAE PLANT**

NOTE: THE SPINOSA MARGARITAE PLANT IS A SPINOSA MARGARITAE PLANT.

CM **INTERPOLATION OF SPINOSA MARGARITAE PLANT**

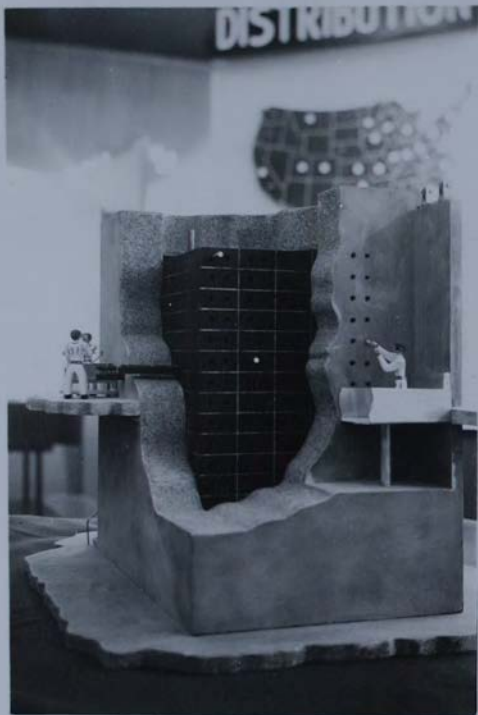
NOTE: THE SPINOSA MARGARITAE PLANT IS A SPINOSA MARGARITAE PLANT.

CM **INTERPOLATION OF SPINOSA MARGARITAE PLANT**

NOTE: THE SPINOSA MARGARITAE PLANT IS A SPINOSA MARGARITAE PLANT.



Hunt Institute for Botanical Documentation



Hunt Institute for Botanical Documentation



RADIOACTIVE DIGITALIS

DIGITALIS PURPUREA (foxglove) is an important plant used in the treatment of heart and kidney disease. It is a member of the Scrophulariaceae family. The active principle of Digitalis is digitoxin, which is a glycoside. It is used in the treatment of heart failure, especially in cases of congestive heart failure. It is also used in the treatment of certain types of arrhythmia.

Digitoxin is a cardiac glycoside. It acts by increasing the force of contraction of the heart muscle. It also has a diuretic effect.

Digitoxin is used in the treatment of heart failure, especially in cases of congestive heart failure. It is also used in the treatment of certain types of arrhythmia.

Digitoxin is a cardiac glycoside. It acts by increasing the force of contraction of the heart muscle. It also has a diuretic effect.

Digitoxin is used in the treatment of heart failure, especially in cases of congestive heart failure. It is also used in the treatment of certain types of arrhythmia.



Hunt Institute for Botanical Documentation



Hunt Institute for Botanical Documentation



Hunt Institute for Botanical Documentation



Hunt Institute for Botanical Documentation



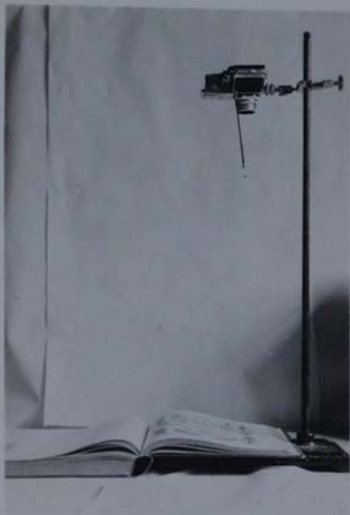
Hunt Institute for Botanical Documentation



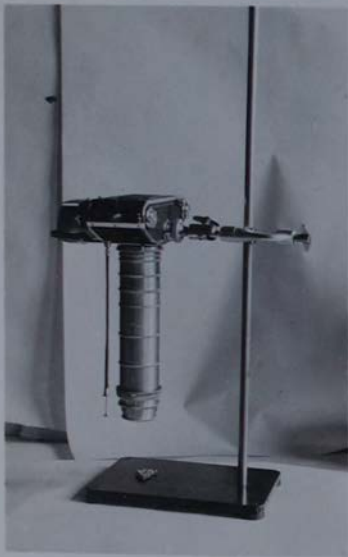
Hunt Institute for Botanical Documentation



Hunt Institute for Botanical Documentation



Hunt Institute for Botanical Documentation



Hunt Institute for Botanical Documentation



Hunt Institute for Botanical Documentation



Hunt Institute for Botanical Documentation



Hunt Institute for Botanical Documentation



Hunt Institute for Botanical Documentation



Hunt Institute for Botanical Documentation



Hunt Institute for Botanical Documentation







Hunt Institute for Botanical Documentation



Hunt Institute for Botanical Documentation



OROBANCHACEAE
 Orobanchaceae
 Orobanchaceae

OROBANCHACEAE
 Orobanchaceae
 Orobanchaceae



Hunt Institute for Botanical Documentation



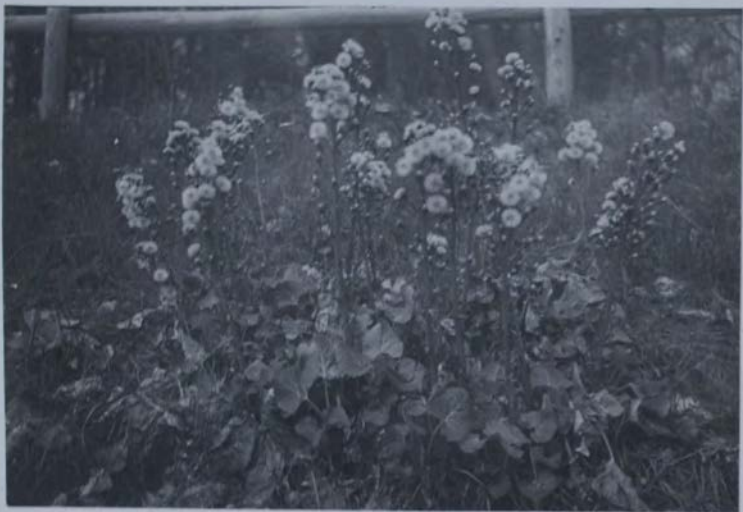
Hunt Institute for Botanical Documentation



Hunt Institute for Botanical Documentation







Hunt Institute for Botanical Documentation



Hunt Institute for Botanical Documentation



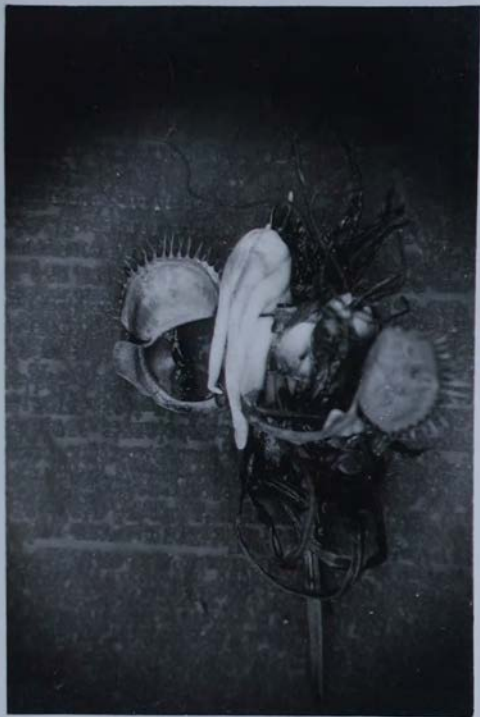
Hunt Institute for Botanical Documentation



Hunt Institute for Botanical Documentation



Hunt Institute for Botanical Documentation



Hunt Institute for Botanical Documentation





Hunt Institute for Botanical Documentation



Hunt Institute for Botanical Documentation



Hunt Institute for Botanical Documentation



Hunt Institute for Botanical Documentation



Hunt Institute for Botanical Documentation



Hunt Institute for Botanical Documentation





Hunt Institute for Botanical Documentation



Hunt Institute for Botanical Documentation



Hunt Institute for Botanical Documentation



Hunt Institute for Botanical Documentation



Hunt Institute for Botanical Documentation





Hunt Institute for Botanical Documentation



Hunt Institute for Botanical Documentation



Hunt Institute for Botanical Documentation



Hunt Institute for Botanical Documentation



Hunt Institute for Botanical Documentation



Hunt Institute for Botanical Documentation



Hunt Institute for Botanical Documentation



Hunt Institute for Botanical Documentation



Hunt Institute for Botanical Documentation



Hunt Institute for Botanical Documentation



Hunt Institute for Botanical Documentation



Hunt Institute for Botanical Documentation



Hunt Institute for Botanical Documentation



Hunt Institute for Botanical Documentation



Hunt Institute for Botanical Documentation



Hunt Institute for Botanical Documentation



HARRISON SCHMITT EUGENE CERNAN



Hunt Institute for Botanical Documentation



Hunt Institute for Botanical Documentation



Hunt Institute for Botanical Documentation







Hunt Institute for Botanical Documentation



Hunt Institute for Botanical Documentation



Hunt Institute for Botanical Documentation



Hunt Institute for Botanical Documentation



Hunt Institute for Botanical Documentation



Hunt Institute for Botanical Documentation



Hunt Institute for Botanical Documentation



Hunt Institute for Botanical Documentation



Hunt Institute for Botanical Documentation





Hunt Institute for Botanical Documentation



Hunt Institute for Botanical Documentation



Hunt Institute for Botanical Documentation



Crocus sativus L.
Spanish Saffron
S. Europe, Asia.
Botanical Garden, II. 66. 196. 196



Xanthoria ambigua DC.
Chromolivaceae Glasswort
Fossils in male (1.) and female (2.)
Newville, N.J. IX. 1946.



Hunt Institute for Botanical Documentation





Hunt Institute for Botanical Documentation



Hunt Institute for Botanical Documentation



Hunt Institute for Botanical Documentation



Hunt Institute for Botanical Documentation



Hunt Institute for Botanical Documentation





Hunt Institute for Botanical Documentation



Hunt Institute for Botanical Documentation



Hunt Institute for Botanical Documentation



Hunt Institute for Botanical Documentation



Hunt Institute for Botanical Documentation



Hunt Institute for Botanical Documentation



Hunt Institute for Botanical Documentation



Hunt Institute for Botanical Documentation



Hunt Institute for Botanical Documentation



Hunt Institute for Botanical Documentation



trochiloides *setariae*
1850



Hunt Institute for Botanical Documentation