



Hunt Institute for Botanical Documentation
5th Floor, Hunt Library
Carnegie Mellon University
4909 Frew Street
Pittsburgh, PA 15213-3890
Contact: Archives
Telephone: 412-268-2434
Email: huntinst@andrew.cmu.edu
Web site: www.huntbotanical.org

The Hunt Institute is committed to making its collections accessible for research. We are pleased to offer this digitized version of an item from our Archives.

Usage guidelines

We have provided this low-resolution, digitized version for research purposes. To inquire about publishing any images from this item, please contact the Institute.

About the Institute

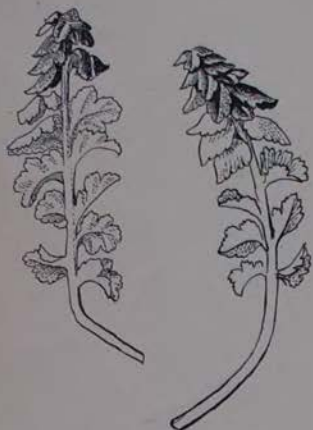
The Hunt Institute for Botanical Documentation, a research division of Carnegie Mellon University, specializes in the history of botany and all aspects of plant science and serves the international scientific community through research and documentation. To this end, the Institute acquires and maintains authoritative collections of books, plant images, manuscripts, portraits and data files, and provides publications and other modes of information service. The Institute meets the reference needs of botanists, biologists, historians, conservationists, librarians, bibliographers and the public at large, especially those concerned with any aspect of the North American flora.

Hunt Institute was dedicated in 1961 as the Rachel McMasters Miller Hunt Botanical Library, an international center for bibliographical research and service in the interests of botany and horticulture, as well as a center for the study of all aspects of the history of the plant sciences. By 1971 the Library's activities had so diversified that the name was changed to Hunt Institute for Botanical Documentation. Growth in collections and research projects led to the establishment of four programmatic departments: Archives, Art, Bibliography and the Library.

Die Plattenentwicklung müsste
am Vegetationspunkt vorkommen
werden.

Hoffentlich genügen Ihnen
die Zeichnungen





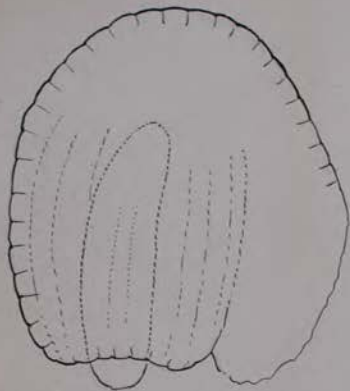
Young Blätter



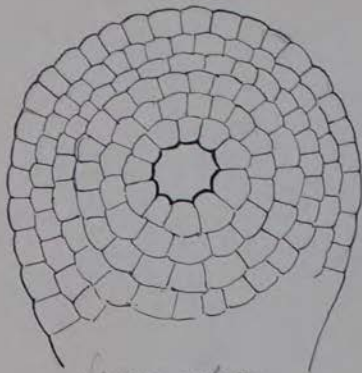
Erste 1. Blätter



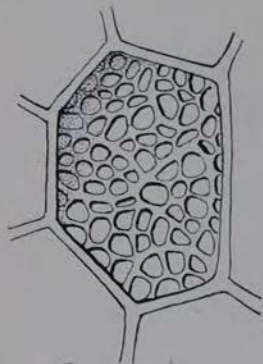
Fortiges Blatt



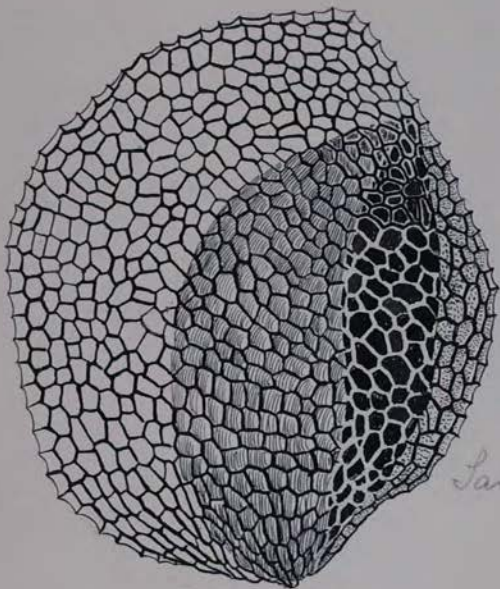
Laminariaanther



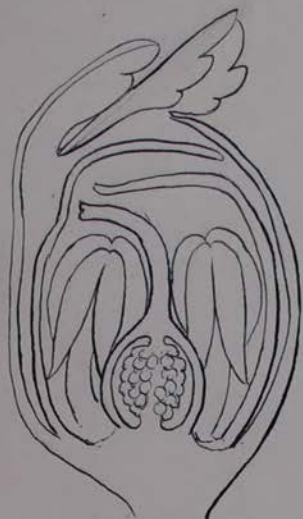
Laminariaanther
opt. Querschnitt



Zelle von Laminariaanther
mit Verdickungswand
auf 2 Innenwänden

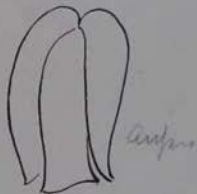


Laminaria



Staubblatt

Staubblatt



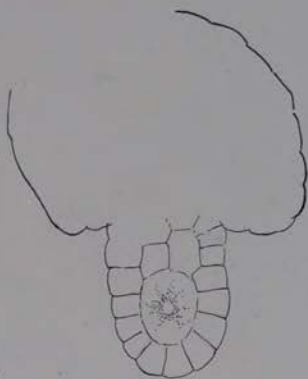
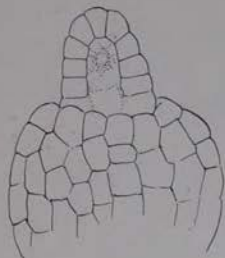
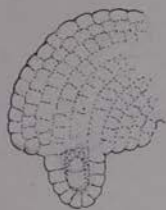
Anther



Pollen

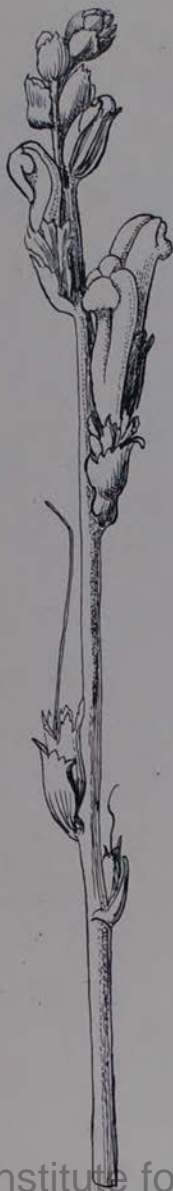
Kelch in junger Blüte Längsschnitt C

Samenanlage aus C



Samenanlagen aus C
stärker vergr.

B. *Ficus Kellif* *cinerea* *Blind*



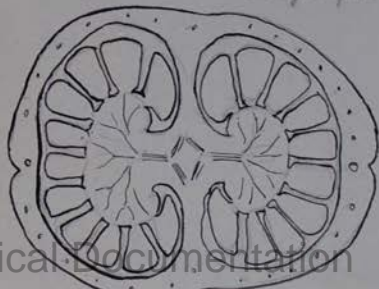
Blüte entblüht



Blüte & Frucht



Blütenanschnitt



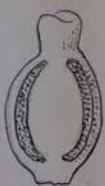
A.



Blumenkronend
aus A

Haarblätter
Fruchtknoten
lebend

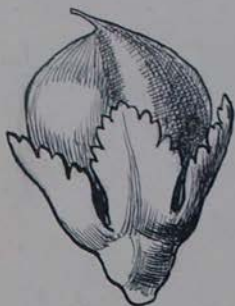
Ganz jung, Blüte weiß, Kelch eingestülpt



Haarblätter aus A

Fruchtknoten
aus A

Fruchtknoten aus A
absterben vor



Frucht - Borst in Sepalsseite

