



Hunt Institute for Botanical Documentation  
5th Floor, Hunt Library  
Carnegie Mellon University  
4909 Frew Street  
Pittsburgh, PA 15213-3890  
Contact: Archives  
Telephone: 412-268-2434  
Email: [huntinst@andrew.cmu.edu](mailto:huntinst@andrew.cmu.edu)  
Web site: [www.huntbotanical.org](http://www.huntbotanical.org)

The Hunt Institute is committed to making its collections accessible for research. We are pleased to offer this digitized version of an item from our Archives.

*Usage guidelines*

We have provided this low-resolution, digitized version for research purposes. To inquire about publishing any images from this item, please contact the Institute.

*About the Institute*

The Hunt Institute for Botanical Documentation, a research division of Carnegie Mellon University, specializes in the history of botany and all aspects of plant science and serves the international scientific community through research and documentation. To this end, the Institute acquires and maintains authoritative collections of books, plant images, manuscripts, portraits and data files, and provides publications and other modes of information service. The Institute meets the reference needs of botanists, biologists, historians, conservationists, librarians, bibliographers and the public at large, especially those concerned with any aspect of the North American flora.

Hunt Institute was dedicated in 1961 as the Rachel McMasters Miller Hunt Botanical Library, an international center for bibliographical research and service in the interests of botany and horticulture, as well as a center for the study of all aspects of the history of the plant sciences. By 1971 the Library's activities had so diversified that the name was changed to Hunt Institute for Botanical Documentation. Growth in collections and research projects led to the establishment of four programmatic departments: Archives, Art, Bibliography and the Library.



# MEMORANDUM BOOK

Digitized by Hunt Library and Documentaion

1935-10

*[Handwritten signature]*

R-210-Open Side  
R-211-Open End

MS. A. 9. 1. 18. 1  
1811-1812

E. LUCY BRAUN  
2702 MAY ST  
CINCINNATI,  
OHIO

1933  
IV

- June 23. Joe Day Branch  
24. Little Joe Day "  
25. to Bad Branch  
26. River Hills, Harlan + Fletcher Co.  
27. Bad Branch  
28. Care Branch  
July 4. Bad Branch - High Rock



June 23  
Joe Day Branch

---

Immed. vic. of lower part  
of stream

Site, near to stream

Hemlock

Rhod.

red maple

Clethra

Carpinus

laurel

dogwood

Evonymus

bitternut

holly

bush

Clethra

Chestnut <sup>leaves</sup>

Tulip <sup>stem</sup>

Viola hastata

Oxal

" blanda

Magnifera

Polyst

Asp n b

Lowest slopes

hemlock	Rhod
red maple	laminell in
beech	art. form
Oxydendron	art
chestnut	Anem. trif
	asp n b
	pluksonia
Almost no	Asarum long
ground	Mitchella
layer	Medeola
	Lunobryum
	Polytrichum
	Scleranium
	Bozzanini
	V. Rolundifol
Moss in mounds around	
base	

Digitized by Hunt Institute for Botanical Documentation

Rise - Ridge heath

Secondary forest of	
scarlet oak	laminell
chestnut	Rhod
hemlock	

Open places look just like Adams Co shale slopes

Baeomyces pinners in fruit margin  
Soil not sandy

dogwood	Galax
	Epigaea
Old trees:	Gaultheria
hemlock	Ulex
wh oak	Chimaphila
chestnut	Cladonia spp
sc oak	

Moss mounds at edge of trail & around tree + shrub base



Burn -

There are "old ridge"  
like Adams Cr Oak Ridge  
Cus. m. m. laurel  
some Rhod. & chest  
Cunilla

Below ridge - a  
meso slope forest  
of beech  
& maple  
red maple  
chestnut

Crest becomes very  
narrow  
trees of ridge top are  
chestnuts  
ch oak

Just over on north  
side, Rhod. begins, tall

Ridge top:  
abundant refer of D. prunus  
r maple  
Oxyd.  
so oak

Heath layer of  
laurel (broken) *rock here looks  
like Waverley m  
Oak Ridge*  
var var Azalea tutes  
Galax " red  
tr. art  
m. nigr.

Sluist laer + acumin  
+ rotundif  
Sluist part + - + maril  
Lespedeza repens, hirta  
Sericarpus asteroides  
Asyrum Panicum, v. brom  
Asy. Potentilla pumila

(This seems to be VIII)

For some reason or other  
all the heaths drop out

- Syring is
- ch oak
- chestnut
- tulip
- hackberry
- Cucumber
- W. herb. understory
- of this type &
- abundant saplings
- Quercus
- Buttercup
- Hogweed, lance

Just like the top of  
mt at Lyndale  
even w. red azalea  
Then some heaths

Digitized by Hunt Institute for Botanical Documentation

Come u again & Cunda

- Then slope forest of
- maple, basswood, chestnut
- red oak tulip
- & meso under, with
- ferns incl. Adiantum
- Astilbe
- vitaceae

(Going back)

Ridge: very narrow  
Wood Similar to "Oak Ridge"  
 Chestnut  
 red oak  
 Dryd

Shale (not cut layer)  
 vac. soil & tall plant  
 Azalea red  
 Camula



*Hieracium venosum*  
*Horostoma tenuif*  
*Samolus b n d*  
*Clasyst laur*

Digitized by Hunt Institute for Botanical Documentation

June 24  
Little Joe Day Branch,  
Pine Mt.,

Lower part is the  
mess prairie type: -

beech	Rhod.
hemlock	Witchhazel
white oak	Amelanchier
tulip	Pyrola
birch (lenta)	Clethra
Magn. fraseri	Evonymus
Chesnut	Epigaea
Oxyd	V. rotundifolia
dogwood	Fraxinus
red maple	Asp n b
red oak	Galax
	Anemone
	Liarella on bark
	at stem
	V. hastata



Low

Slopes same tree  
& Rhod. with add.  
herb plants as

Geranium

Anemone

Anemone

Aspl of f

trich. rostrate

herbs not too dense

Rhododendron vmt.

immens. along stream

but drops out

on slope (clay)

Mixed mass of

S. maple

mitilhojel

beech

papaver

Nyssa

M. fraxin

Digitized by Hunt Institute for Botanical Documentation

herb

dry ground

Rubus allegh

Cnapius

Astilbe

red maple

Geranium

chestnut

Hearella

gentian

Eupartic

Asp n l.

Aspl of f

Polypt

Phlyopt

Cerisea

Cornifugo

Cynogl berg

Amphicarp

Anemone

Callisoma

blue violets

Aster divar

Erig. pulch

Back into Rhod.  
thickets (only on  
steep slopes near  
stream, no

Rhod. goes higher  
on east than on  
west slopes

Then up the slope  
to a poorer type  
of m.m.

Without beech  
but w

sh oak  
chestnut  
red oak  
boxwood  
myrtle  
birch

Rock  
slide

Digitized by Hunt Institute for Botanical Documentation

tulip

laurel  
Pedicularis  
red azalea  
Cypriped  
acaulis  
Galax  
vac vac

Higher chestnut oak  
enters

Upper part of rock  
slide slope;

Ch. oak      oxford  
occ chestnut

Open lower layers w  
laurel      arbutus

vac vac & star Galax  
Quillheim  
Lespedeza sp.  
Crepis minor  
Dasyl. lat  
Sedocarpus



A bit of rock protrudes -  
some of pine

Ridge between two stones

① Dip surface exposed  
moss mats of



*Polytrichum*  
*Leucobryum*  
*Bryozoa*

Invaded by *Gaultheria*  
*arbutifolia* & *Galap* -

Digitized by Hunt Institute for Botanical Documentation

not found & scattered  
herbs of such places

*Chrysopsis gran*  
*big Danthron*  
*Wepser*

These face not high  
& exposed as are those  
of Galap tops

Scattered trees -

Ch oak

Chestnut

Dogwood

Pine

Malpas

Where slabs are not  
at surface a richer  
ass. - heaths from

4 Smilax 1

*Pyrrola*



(2) Further down into  
fak where damp &  
dark in  
hemlock & rhod.  
rocks are covered in  
moss mats of  
Thuidium & Juniper  
moss

Polytrichum  
Asplenium  
Mitchellia

Magnificent gorge  
of Big hemlock  
& Rhod.

Rocks of creek bed  
dipping strata  
moss & lichens  
covered

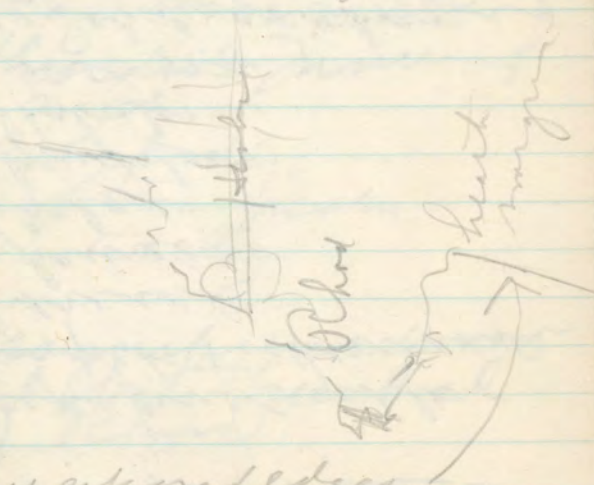
Digitized by Hunt Institute for Botanical Documentation

A piney ridge or  
rather slope  
in white pine, chestnut  
& hemlock moss -

Deep pine needle  
carpet & dominance  
of ericads  
laurel  
Galax  
Gaultheria  
Arbutus  
Vaccinium

*W. Solidago odora*  
*Panicum* spp. <sup>& Sorgh</sup>  
*Desmodium repens* <sup>big bunch</sup>  
*Smilax* <sup>low</sup>  
*Tephrosia*  
*Aster laevis*  
Then pine dominant  
w. sc. oak

& base, var. down.  
 below w. grasses  
 & gaultheria, etc  
 as named before



Dry exposed edges  
 Alectis &  
 in. of Gaultheria  
 in pine woods

Digitized by Hunt Institute for Botanical Documentation

Just like the top of  
 natural ledge,  
 turned at a 30° angle  
 base, hummocky  
 & lured shrubs  
 on the ground heaths  
 Pteris, grasses  
 Aster etc

Out on Scuttlehole  
 Gap Road

Uppermost slopes  
 of Mt. <sup>open + very</sup>  
 Open pine-~~ch~~ oak  
 forest, with  
 heaths, grasses  
 & Alectis etc



Pitch pine ~~###~~ ~~###~~ ~~###~~ ~~###~~ ~~###~~ ~~###~~ ~~###~~ ~~###~~  
 virgin pine ~~###~~ ~~###~~ ~~###~~ ~~###~~  
 ch oak ~~###~~ ~~###~~ ~~###~~ ~~###~~  
 sc oak ~~###~~ ~~###~~  
 chestnut ~~###~~ ~~###~~ ~~###~~  
 24 pine ~~###~~ Nypsa

M. fraseri enters  
 Understory, scattered  
 small trees of same  
 spp & locust & one  
 red maple

Amelanchier  
 Laurel

bac vine & stem  
 Gay red Azalea

Tephrosia

Digitized by Hunt Institute for Botanical Documentation

Grasses Chry. mar  
 Alnus broth pedic  
 Euprot  
 Eleocharis  
 Serenoa repens

Corydalis on rocks

[Hemlock comes within  
 few 100 ft of head of  
 stream]

Tulip in gap  
 & just over  
 hemlock & Rhod. in  
 spring at head of  
 gap on north side

Tulip abundant just under  
 cliffs at crest, on N side



Shaded cliffs facing  
head of L. J. P. -

*Hebecladus rugellii*

---

Stream head, in  
little *Diocharis* -  
ledge among  
w. *Chelone* P.

Almost at once -  
hemlock, scattered  
& Rhodod. & laurel

tulip

m. grass

birch

chestnut

Rhod. & laurel

Digitized by Hant Institute for Botanical Documentation

Some form dense  
thicket in narrowed  
part of valley

Oak-ch. & Oak pine

slips alone

*V. rotundifolia* common

---

Upper N.E. slopes  
of valley, under  
cliffs & so

Chestnut

Ch oak

tulip

big *Magn. fraseri*

very much understory  
w. much ferns

Interrupted

Aspl f

Polyst

part. J. e. p. y. e  
p. id. y.  
Vireo flava  
Gallium lance  
Cimicifuga  
Hydrangea  
Asp. n. l.  
Geranium  
Raspberries & D. A.  
Worm acorn

Scuttlehole Gap road  
descend by way  
of long ridges, which  
is mostly Ch. Oak - Chest  
pine, ac. oak & in  
places hickory  
etc.

Digitized by Hunt Institute for Botanical Documentation

Heaths prominent  
throughout.  
More white oak, lower  
Old road cut - in  
places pioneer veg. -  
1st (where shaded) is  
Baomyces  
Viola pedata early  
In many places, almost  
indist. from general  
veg., w. Laurel, Rhod,  
Ceanothus, Dyd.,  
Tr. arbutus  
Erig. pulchellus  
Plystrinus, etc.



"Knob" at foot of mt.:-

Scarlet oak	jac. stem
beech	Populus
hemlock	Asplen
Chestnut	Amel
white oak	Witchh.
red oak	Rhod.
red maple	laurel
tulip	

Poor, oak woods type  
of undergrowth  
Helleborus, pink  
Sedum  
Anemone  
Sambucus  
Polystich  
Cypripedium

Digitized by Hunt Institute for Botanical Documentation

Lots of beech, oak oaks  
red maple low on N  
& NW & Rhod grows  
very up

& W Oak on SW  
& laurel & Rhod  
Cypripedium  
Pine  
Sc oak

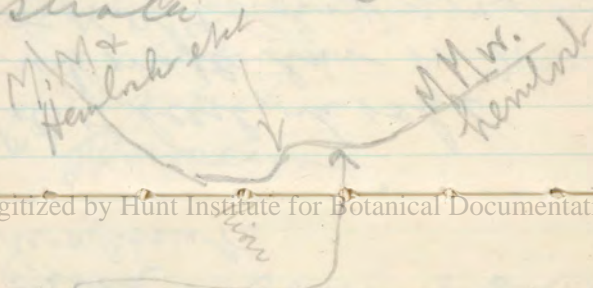


June 25  
To Bad Branch

En route -

Upper valley very  
messy. red oak  
Hemlock, beech  
'sawwood', oak oak  
tulip, ch., birch  
M. fraseri, red maple  
holly laurel, Rhod  
dogwood

Acres very one of  
most char plants  
River flowing over  
strata



Digitized by Hunt Institute for Botanical Documentation

Flat, cleared, sandy,  
forming in p pine +  
laurel; orchid; tr. arb.  
Polystichum cuspidatum  
Holly along r.  
Rhod. of slope

Hort. serpyll. in moss  
at edge of river

Sphagn. - Polyst. mats  
at river's edge r.  
H. serpyll. + Speranthe

June 26  
 Pine Hill, Putnam Co.

Rain -

Hemlock Rhod

beech

red maple

tulip

M. fraxi

chestnut

Nyssa

wh oak

4 mos (remains) under  
 w. var. of ferns!

asp. ff

Prisaca

Phy.

Psedera

Polyp

dogwood

Adiantum

brch

walnut

Digitized by Hunt Institute for Botanical Documentation

Coming around onto  
steep pine face

hemlock very little

beech rhod

red oak

chestnut

wh oak

Cut-off pine face

Rocky -

Hemlock

beech

Nyssa

M. fraxi

brch

tulip

butternut

basswood

dogwood

grape

blacif

Evonym

Rhod

Clethra

spice bush

ab. dir

Asplenium - just below

Scarella

Asarum

asp. sp.

Walsh. fern

blanc

Polypody

cedar  
 white  
 Phacelia  
 Asarum  
 white

cl



Cliffs part way up  
 Plant Hydrogen  
 Hamchea Peden  
 Asp mary Polypody  
 Asp pl pan v. rotund  
 Mitchell in moss  
 Mosses, incl. Osmaceae  
 Thuidia ~~all~~ curl up  
 Ant, Anemone  
 Liverwort  
 & lichens - Amph. & other crust

Digitized by Hunt Institute for Botanical Documentation

veg. of ~~mountain~~ steep bank

Betula nigra  
 Spruce  
 Alder  
 Rhodod.  
 Mosses & Pellia, Anemone  
 Anemone v. cuneolata  
 Polyp. say Thalectia  
 Asplen. plen Rust. ~~lacin~~  
 Parnassia spf  
 Iris in moss

Cont. veg. of steep rocky  
 cut-off slope:  
 Acer penn. Azalea rac  
 Hydr. Medeola  
 Alist. mechneria Osarum can  
 Mitchell Aster dis  
 v. blanda Adiantum  
 Hepatica Dent. heter  
 Anem. v. l.

County Line river bank

hemlock	Comus alt
chestnut	Rhod
beech	clitorea
Nyssa	M. tripetala
Hickory	Grape
small hackb	red bud
birch	tulip
ash	lucyeye
hassard	buttercup
	red val

About the same herbaceous growth as last; nettles & Impatiens

Opposite bank -  
alder, syc. r. birch,  
sw. gum

Digitized by Hunt Institute for Botanical Documentation

Much Phacelia

Mechanica

Blue cohosh

Sedum

River cliffs at mouth of Colliers Creek

Aster macrophyllus

" divaricatus

Aspl. par Sedum

Asarum virg Polytech

Adiantum Hepatica

Mitella V. blanda

Cimicifuga V. prostrata

Camptoporus Ginger

Asp. margin. C. leucos

Arisaema Columbine

Hydrangea Impatiens

Saxifraga Sol. latif

Astilbe Sen. vlt

Iris cristata (L.) Mechanica



Aralia rac	M. tripetala
Amphicarpa	redbud
<del>grey maple</del>	Witch hazel
butternut	Rhod. <sup>not</sup>
tulip	Clethra <sup>not</sup>
red oak	Vitis bicolor
hemlock	Spice bush
M. fasciata	dogwood
white oak	bit. acerif.
birch	p. flav. ralph
basswood	sp. virg.
hackberry	Erigeron
beech	Carpinus
<del>is maple</del>	
Mechanica on most mossy	
cliffs as well as slope	
& lower part	

Rocks here are well  
 irrigated -  
 Stachys  
 Columbine  
 Sedum

Digitized by Hunt Institute for Botanical Documentation

& all mentioned above

Jacks here now in  
 bloom -  
 very broad infl. spadix  
 & stulby spikes

Just -  
 more Rhod. -  
 most of other things  
 drop out  
 aspen virg. now

Bad Branch  
June 27

Hemlock - Rhod -  
y. Birch (tent + lutea)  
Kalmia <sup>trifl.</sup> (clutera)  
M. Fraser, M. trifl.  
Thalictrum <sup>trifl.</sup> flavum  
on mossy rocks in  
creek

Asarum virginicum  
Mitchellii

Mossy rocks (damp  
creeks)

Thalictrum flavum  
Oxalis acetosella  
Viola cucullata

Digitized by Hunt Institute for Botanical Documentation

V. blanda, cucullata

Polypodium  
Trillium

Tr. erectum

Asp. sp.

Eryngium "Indian wood"

Artemisia <sup>serpyllif.</sup> - "blue  
bank flower"

Carex, near

Lycopodium lucidulum

Circaea alpina

Pyrola

& Listeria

Creek, cont: -

Vib. (like head of Elkens)

V. rotundifolia

Anemone fringed



Cliffs -

add *Hutch pygellii*  
to plant of rocks

Up tram at fork -

*Meehania*

*V. rotundifolia*

*Asp spin*

*Clintonia*

*Lyc. luc.*

*Artemisia guericq*

Sp. look in almost  
pure stand

tulip taken out -

higher Red maple

Digitized by Hunt Institute for Botanical Documentation

*Tulip*

*rossii*

Cliffs: -

*Silene rotundifolia*

*Chenop. (Tight's Heller)*

*Hutchera pygellii*

Near falls - mats of

2 spp of *Sphagnum*

+ *Lamell* + *Gayl.*

In mats of falls, *Tractretterae*  
~~*Boyseniana*~~  
+ *Sanguisorba*?

Tram road - return trip

Trees -

	{	2	3	2	4	3	3	5	6	
Hemlock	{	9	5	4	7	2	1	3	2	5
tyler		###	###	###	###	###	###	###	###	###
hackberry		1								
beech		###								
birch, lutea		##								
" lutea		2	###	###	###	###	###	###	###	###
red maple		###	###							
chestnut		###								
basewood		###								
ch oak		##								
cucumber		1								
red oak		##								
M. fraseri		##								
nyssa		##								
hemlock		##	1/2	ft	circ					

Digitized by Hunt Institute for Botanical Documentation

Rhod	V. rotundifolia
Clethra	Polystichum
M. truncata	Aspl. fl.
Saxifraga	Asp. spin.
Hydrogeum	Chenopodium
Psephodes	Mitchella
Mitchell	V. blanda
P. vry	Junella
Vib. acerif	Aspl. acrost.
Mitchholz	Adiantum
holly	Aster des.
Mt Laurel	Medeola
	Arisaema qu.
	Mitchella
Mechanica	V. hastata
	V. prostrata
	Asarum vry
	Eup. urtica
	Circaea lut.
	Neule
	Lyc. lucid.





VI-9


Rhod. along Joe Day  
trail 1/2 m 16 thunder  
10. Mist rising after  
storm 1/25 m 8, 7 PM


11. Rhod. + hemlock in  
Little Joe Day 1" m 16 cloudy

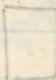
12. Mossy rocks - with  
polypores; walking fern  
on right face -  
big bush near +  
ch oak further + Rhod  
1" m 16 cloudy

<sup>K29</sup>  
VII-1 Road near  
Senatchole Gap -  
Tilted rock, road  
P. virg. on right  
ch oak + sc oak



2.  Pitch pine +  
vat below; Black Mt  
1/2 m 22 cloudy

3.  Black Mt + E.C. gap  
ch Ont  
river ridge  
pitch pine ch. in bloom  
1/25 m 11

4. June 26 1/25 - 6.3 v. cloudy   
Cumberland R. Harlan Co  
Big tree on right is beech  
red maple, birch + hemlock, etc  
Rhod in bloom near bank

5 1/2 m 22 Cumberland  
River, Harlan Co.  
Betula nigra on left

Digitized by Hunt Institute for Botanical Documentation  
~~amusement slope right~~  
right

6

7

8 1/25 m 5 C.R. road  
to Bad Branch

9 1/25 m 11 Coal bank  
(Parsons)

10 Bad Branch  
1 m 22

11 Bad Branch 1 m 16  
Hemlock - Rhod

12 Bad Branch 1 m 22  
dippery strata

K<sup>30</sup>

VIII 1 m 11

Bad Branch comes  
thru a dark tunnel

2 Cliffs 1/25 11

3 " 1/25 11

4 Down from Falls

5

6 1" m 16 - gorge above  
falls

7 Side view of falls  
1/25 m 8

Flowers beyond water  
are ~~Bryonia~~ *Bryonia*

Digitized by Hunt Institute for Botanical Documentation

8 From branch up  
slope thru herbs  
& Rhod

9. 1" m 16

Oxalis acetosella & Asp  
spinulosum in moss  
carpet - Bad Branch

10 1" m 16 dense shade

Moss covered rocks  
at stream margin -  
Oxalis acet  
Asp. spin. above  
moss, Clethra & Rhod  
hanging

11 3" m 2 2

Oxalis + Lyc. in moss  
mat



12. Cumberland River  
just below Parson.

~~IX-1~~ -1 <sup>K31</sup> 1/2 on 22  
2nd growth tall stand

IX-2 view from porch

IX-3-8 Panoram from  
High Rock  
1st is east - last west  
last has Dryden

9. West from highest Pt  
Low plateau toward Jenkins  
Purple Rhod on near  
rocks; Gaylussacia  
in immediate for

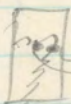
Digitized by Hunt Institute for Botanical Documentation

10 SW from High Rock  
Rhod 7

Free tom  
Pine MD  
near

Roy filter 1/2 on 16

11. 1/2 5 on 16



Cliffs, top of High Rock

Rhod car

12. Rhod cat. (12.8 ft)  
on edge of cliff  
1/2 5 on 16 of full sun

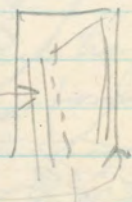
K32

X-1 Log across upper  
Bad Branch  
w. Rhod, laurel, hemlock  
clutter, moss + clad

2 Sphagnum compactum  
mat on cliff at  
Falls of Bad Branch  
1/25 m 11

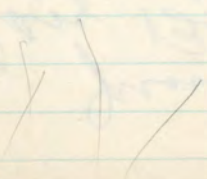
3. ~~Bryhacia~~ 1/5 m 76  
Taurinella at Falls

4 1/25 m 8  
Hemlock +  
cliffs  
Falls



5 1 m 22

hemlocks at  
ft of west facing cliff  
Rhod on cliff  
moss + ferns in front cliff





June 28  
Cane Branch, of  
Clonick  
Big Black Mt.

---

Start up

hemlock, B. lutea,  
beech, truly white oak  
Rhod. holly, red eye  
dogwood, Quail buckeye  
hatterum, some of  
Carpinus  
Yellow birch all along  
run

Rhod. banks with  
lots of V. rotundifolia  
michauxii  
V. blanda

Digitized by Hunt Institute for Botanical Documentation

Mechanica

Astulbe

North Slope  
Forest comes to stream  
with no much Rhod.

Beech |||| |||| |||| |||| |||| |||| ||||

birch |

tulip ||| |||

basswood |||| |

s. maple |||| |||| ||

Hemlock low, mostly

buckeye | |||

chestnut ||||

hickory |

cucumber |

Y. birch |

Myssa |

Astilbe	Asplacrost
Arniif	Asp spin
Cercara	" m h
+ hydrangea	" ang
Arbacia	Polyst
Amphicarpa	Adiantum
Menisps	Aspl f t
Cauloph	Phegopt
Psedera	Botrychium
Phacelia	
Nettle	
Bloodroot	
Cil. poppy	
Ziarella	
Spice bush	
l. pubescens	
Aralia rac	
Phlox div	
Pilea	

Digitized by Hunt Institute for Botanical Documentation

V. canadensis  
 Ranunculus  
 Collinsia  
 Ginger  
 Hepatica  
 nettle  
 Impatiens  
 Tr. exaltat

2nd growth truly stand  
 on S. slope in Camp  
 Vernal (pick. VII-1)  
 has lots of little maple  
 some dogwood, redwood  
 + small birch

Higher forest has truly  
 steep slope, big maple  
 + buckeye



To ground, & *Orchis spect*

On up - cross branch  
basswood - buckeye - 1 mile

has *Cystis*, frag. &

Goldie

Squirrel corn

ginger & the

*Orchis spect*

*hipposuris* &

a big walnut

Down -

Across creek

NE Slope -

beech from

trails scattered thru out

*S. maple*

Digitized by Hunt Institute for Botanical Documentation

Chestnut

Not appr. diff from

that counted on ascent

July 4

very meso - ~~S~~ flowering  
etc

1 Hemlock, wh. oak, beech,  
buckeye, tulip, chestnut  
with large ferns

Cross Bad Branch

Ascend S.E. slope -  
dip slope - soil about  
1 ft deep over large  
areas

Chestnut, ch., oak,

Digitized by Hunt Institute for Botanical Documentation  
sc. oak, pitch pine & big pine  
occ red maple, y pine

Emb. understory of  
wh. oak or. ground  
layer of arb. & vint.  
Galap

Baptisia

Croesus

& usual grasses  
etc

Last Summit is  
like Scuttlehole Gap  
summit - pines & open

Rocks of inner edge  
have Gayl. & vac. sp.  
& Rhod. Catam. &  
some Rhod map., Kalina



Rhod. cat. forms  
fringe along cliff &  
in crev. of west side

Top edge:-  
Aster  
occ. clethra  
birch  
Ch. oak

Over on west side  
below cliffs:

Mixed forest of  
basswood - S.M., tulip  
chestnut, red oak,  
cucumber, white oak  
buckeye, walnut,  
wild cherry, Hysop

Digitized by Hunt Institute for Botanical Documentation

Back into Bad Branch:  
where trail crosses:

Hemlock, Rhod. laurel  
ellethra Holly  
Trillium undulatum  
Pipsissewa  
Mitchell  
Epipactis  
Lyc. lucidum  
Medeola

Hemlock  
y Birch  
M. fraseri  
tulip

In places Mitchell &  
gray luc. dom

Back Cover

Digitized by Hunt Institute for Botanical Documentation



To go to Care Branch -  
Sherman Bush,  
little less than  $\frac{1}{2}$  mi up

John Year

$\frac{1}{2}$  mile above Bush's, a  
big beech on right, initials  
H.S.M. - turn up mountain  
on right

*Betula lenta* = mt. birch  
" *lutea* = paper "  
" *nigra* = water birch

*M. hydrangea* - 7-bark

Digitized by Hunt Institute for Botanical Documentation

The strictly Alleghanian  
features are not  
prom. in "M. M.  
forest (as Bluff Mt)  
It is in the adaptive  
communities as displayed  
on Pine Mt that  
these dominate

*Asarum virginicum* very  
char. of lower river  
slopes + *Rhododendron*  
thicket in same  
"heart leaves"

*Epipactis* = snake tongue  
pitch pine is blue pine is  
spruce pine